

Datasheet for ABIN2774674
anti-GABRG2 antibody (N-Term)[Go to Product page](#)

2 Images

Overview

Quantity:	100 µL
Target:	GABRG2
Binding Specificity:	N-Term
Reactivity:	Human, Rat, Mouse, Cow, Rabbit, Dog, Horse, Guinea Pig
Host:	Rabbit
Clonality:	Polyclonal
Conjugate:	This GABRG2 antibody is un-conjugated
Application:	Western Blotting (WB)

Product Details

Immunogen:	The immunogen is a synthetic peptide directed towards the N-terminal region of Human GABRG2
Sequence:	VPEGDVTVIL NNLLEGYDNK LRPDIGVKPT LIHTDMYVNS IGPVNAINME
Predicted Reactivity:	Cow: 100%, Dog: 100%, Guinea Pig: 100%, Horse: 100%, Human: 100%, Mouse: 100%, Rabbit: 100%, Rat: 100%
Characteristics:	This is a rabbit polyclonal antibody against GABRG2. It was validated on Western Blot.
Purification:	Affinity Purified

Target Details

Target:	GABRG2
---------	--------

Target Details

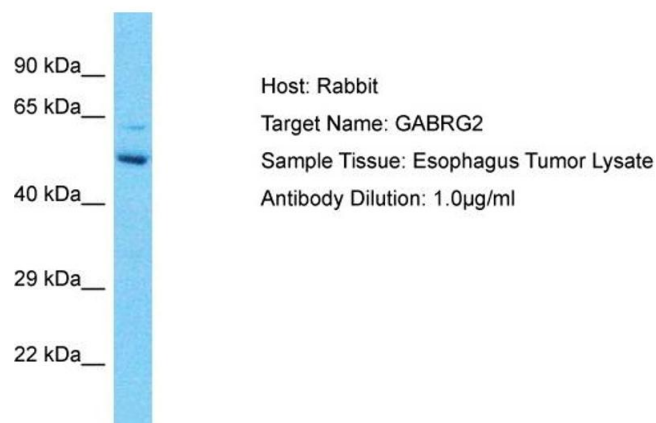
Alternative Name:	GABRG2 (GABRG2 Products)
Background:	<p>This gene encodes a gamma-aminobutyric acid (GABA) receptor. GABA is the major inhibitory neurotransmitter in the mammalian brain, where it acts at GABA-A receptors, which are ligand-gated chloride channels. GABA-A receptors are pentameric, consisting of proteins from several subunit classes: alpha, beta, gamma, delta and rho. Mutations in this gene have been associated with epilepsy and febrile seizures.</p> <p>Alias Symbols: CAE2, ECA2, GEFSP3</p> <p>Protein Interaction Partner: ZDHHC3, GABARAP, PRKCB, PRKCA, GABRG2, DRD5, PPP3CA,</p> <p>Protein Size: 475</p>
Molecular Weight:	52 kDa
Gene ID:	2566
NCBI Accession:	NM_198904 , NP_944494

Application Details

Restrictions:	For Research Use only
---------------	-----------------------

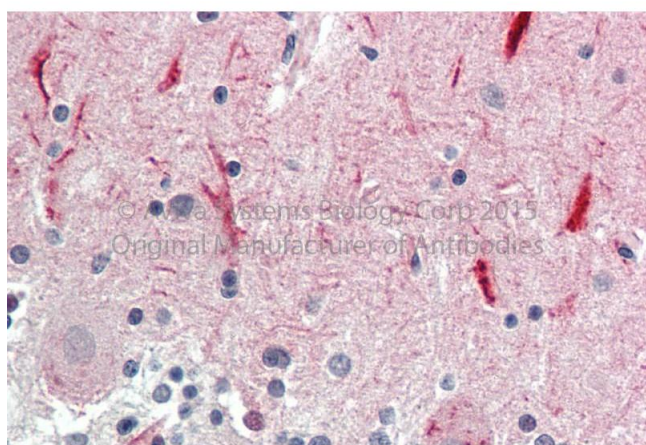
Handling

Format:	Liquid
Concentration:	1 mg/mL
Buffer:	Liquid. Purified antibody supplied in 1x PBS buffer with 0.09 % (w/v) sodium azide and 2 % sucrose.
Preservative:	Sodium azide
Precaution of Use:	This product contains Sodium azide: a POISONOUS AND HAZARDOUS SUBSTANCE which should be handled by trained staff only.
Handling Advice:	Avoid repeat freeze-thaw cycles.
Storage:	-20 °C
Storage Comment:	For short term use, store at 2-8°C up to 1 week. For long term storage, store at -20°C in small aliquots to prevent freeze-thaw cycles.



Western Blotting

Image 1. Host: Rabbit Target Name: GABRG2 Sample Type: Esophagus Tumor lysates Antibody Dilution: 1.0ug/ml



Immunohistochemistry

Image 2. Rabbit Anti-GABRG2 Antibody Catalog Number: ARP36738_P050 Formalin Fixed Paraffin Embedded Tissue: Human Adult Brain, cerebellum Observed Staining: Cytoplasm in hepatocytes Primary Antibody Concentration: 1:600 Secondary Antibody: Donkey anti-Rabbit-Cy3 Secondary Antibody Concentration: 1:200 Magnification: 20X Exposure Time: 0.5 – 2.0 sec