

Datasheet for ABIN2774688  
**anti-FBXL3 antibody (C-Term)**



[Go to Product page](#)

1 Image

## Overview

Quantity:	100 µL
Target:	FBXL3
Binding Specificity:	C-Term
Reactivity:	Human, Mouse, Rat, Dog, Cow, Guinea Pig, Zebrafish (Danio rerio), Horse, Rabbit, Sheep
Host:	Rabbit
Clonality:	Polyclonal
Conjugate:	This FBXL3 antibody is un-conjugated
Application:	Western Blotting (WB)

## Product Details

Sequence:	ELLALSSEK HVRLEHLRID VVSENPQQTH FHTIQKSSWD AFIKHSPKVN
Predicted Reactivity:	Cow: 100%, Dog: 100%, Guinea Pig: 100%, Horse: 100%, Human: 100%, Mouse: 100%, Rabbit: 100%, Rat: 100%, Sheep: 100%, Zebrafish: 86%
Characteristics:	This is a rabbit polyclonal antibody against Fbxl3. It was validated on Western Blot.
Purification:	Affinity Purified

## Target Details

Target:	FBXL3
Alternative Name:	Fbxl3 ( <a href="#">FBXL3 Products</a> )
Background:	Fbxl3 is a substrate-recognition component of some SCF (SKP1-CUL1-F-box protein)-type E3

## Target Details

ubiquitin ligase complex involved in circadian clock function. The SCF(FBXL3) complex acts by mediating ubiquitination and subsequent degradation of CRY1 and CRY2. Recruiter of target protein that may recognize and bind to some phosphorylated proteins and promotes their ubiquitination and degradation.

Alias Symbols: AU041772, AW212966, FBK, Fbl3a, Fbxl3a, Ovtm

Protein Interaction Partner: Skp1a, Cry2, Cry1,

Protein Size: 428

Molecular Weight: 49 kDa

Gene ID: 50789

NCBI Accession: [NM\\_015822](#), [NP\\_056637](#)

UniProt: [Q8C4V4](#)

Pathways: [Photoperiodism](#)

## Application Details

Application Notes: Optimal working dilutions should be determined experimentally by the investigator.

Comment: Antigen size: 428 AA

Restrictions: For Research Use only

## Handling

Format: Liquid

Concentration: Lot specific

Buffer: Liquid. Purified antibody supplied in 1x PBS buffer with 0.09 % (w/v) sodium azide and 2 % sucrose.

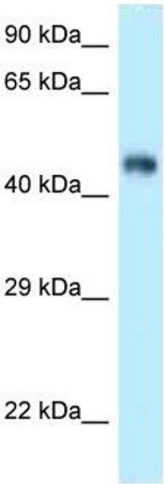
Preservative: Sodium azide

Precaution of Use: This product contains Sodium azide: a POISONOUS AND HAZARDOUS SUBSTANCE which should be handled by trained staff only.

Handling Advice: Avoid repeated freeze-thaw cycles.

Storage: -20 °C

Storage Comment: For short term use, store at 2-8°C up to 1 week. For long term storage, store at -20°C in small aliquots to prevent freeze-thaw cycles.



Western Blotting

**Image 1.** WB Suggested Anti-Fbxl3 Antibody Titration: 1.0 ug/ml Positive Control: Mouse Kidney