

Datasheet for ABIN2774691
anti-FBXW2 antibody (Middle Region)

6 Images

1 Publication

[Go to Product page](#)

Overview

| | |
|----------------------|---|
| Quantity: | 100 µL |
| Target: | FBXW2 |
| Binding Specificity: | Middle Region |
| Reactivity: | Human, Mouse, Rat, Cow, Dog, Guinea Pig, Horse, Rabbit, Zebrafish (Danio rerio) |
| Host: | Rabbit |
| Clonality: | Polyclonal |
| Conjugate: | This FBXW2 antibody is un-conjugated |
| Application: | Western Blotting (WB) |

Product Details

| | |
|-----------------------|---|
| Immunogen: | The immunogen is a synthetic peptide directed towards the middle region of human FBXW2 |
| Sequence: | SLISRWPLPE YRKSKRGSSF LAGEASWLNG LDGHNDTGLV FATSMPPDHSI |
| Predicted Reactivity: | Cow: 100%, Dog: 100%, Guinea Pig: 100%, Horse: 100%, Human: 100%, Mouse: 100%, Rabbit: 100%, Rat: 100%, Zebrafish: 93% |
| Characteristics: | This is a rabbit polyclonal antibody against FBXW2. It was validated on Western Blot using a cell lysate as a positive control. |
| Purification: | Affinity Purified |

Target Details

| | |
|---------|-------|
| Target: | FBXW2 |
|---------|-------|

Target Details

Alternative Name: FBXW2 ([FBXW2 Products](#))

Background: F-box proteins are an expanding family of eukaryotic proteins characterized by an approximately 40 amino acid motif, the F box. Some F-box proteins have been shown to be critical for the ubiquitin-mediated degradation of cellular regulatory proteins. In fact, F-box proteins are one of the four subunits of ubiquitin protein ligases, called SCFs. SCF ligases bring ubiquitin conjugating enzymes to substrates that are specifically recruited by the different F-box proteins. Mammalian F-box proteins are classified into three groups based on the presence of either WD-40 repeats, leucine-rich repeats, or the presence or absence of other protein-protein interacting domains. FBXW2 is the second identified member of the F-box family and contains multiple WD-40 repeats. F-box proteins are an expanding family of eukaryotic proteins characterized by an approximately 40 amino acid motif, the F box. Some F-box proteins have been shown to be critical for the ubiquitin-mediated degradation of cellular regulatory proteins. In fact, F-box proteins are one of the four subunits of ubiquitin protein ligases, called SCFs. SCF ligases bring ubiquitin conjugating enzymes to substrates that are specifically recruited by the different F-box proteins. Mammalian F-box proteins are classified into three groups based on the presence of either WD-40 repeats, leucine-rich repeats, or the presence or absence of other protein-protein interacting domains. This gene encodes the second identified member of the F-box gene family and contains multiple WD-40 repeats.

Alias Symbols: FBW2, Fwd2, MGC117371, Md6

Protein Interaction Partner: SKP1, FBXO6, CUL1, GNB2L1, GCM1, HSP90AA1, BTG2, BTG1, REST, RBX1, FBXW8, EP300, UBE2D2, CDC34,

Protein Size: 454

Molecular Weight: 51 kDa

Gene ID: 26190

NCBI Accession: [NM_012164](#), [NP_036296](#)

UniProt: [Q9UKT8](#)

Application Details

Application Notes: Optimal working dilutions should be determined experimentally by the investigator.

Comment: Antigen size: 454 AA

Restrictions: For Research Use only

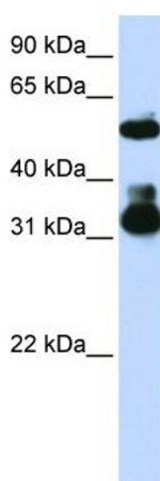
Handling

| | |
|--------------------|---|
| Format: | Liquid |
| Concentration: | Lot specific |
| Buffer: | Liquid. Purified antibody supplied in 1x PBS buffer with 0.09 % (w/v) sodium azide and 2 % sucrose. |
| Preservative: | Sodium azide |
| Precaution of Use: | This product contains Sodium azide: a POISONOUS AND HAZARDOUS SUBSTANCE which should be handled by trained staff only. |
| Handling Advice: | Avoid repeated freeze-thaw cycles. |
| Storage: | -20 °C |
| Storage Comment: | For short term use, store at 2-8°C up to 1 week. For long term storage, store at -20°C in small aliquots to prevent freeze-thaw cycles. |

Publications

| | |
|-------------------|---|
| Product cited in: | Small, Seman, Castator, Brown, Liggett: "False positive non-synonymous polymorphisms of G-protein coupled receptor genes." in: FEBS letters , Vol. 516, Issue 1-3, pp. 253-6, (2002) (PubMed). |
|-------------------|---|

Images



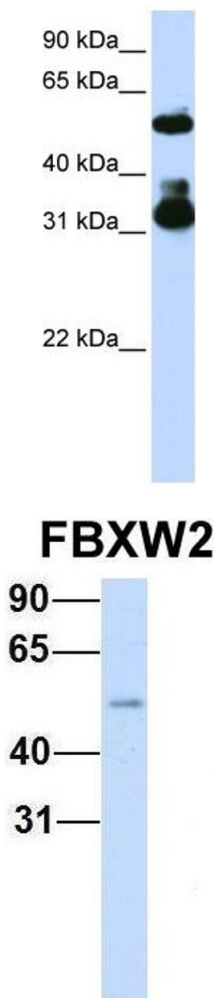
Western Blotting

Image 1. WB Suggested Anti-FBXW2

Antibody Titration: 0.2-1 µg/mL ELISA Titer: 1:1562500

Positive Control: Jurkat cell lysate

FBXW2 is supported by BioGPS gene expression data to be expressed in Jurkat



Western Blotting

Image 2. WB Suggested Anti-FBXW2 Antibody Titration: 0.2-1 ug/ml ELISA Titer: 1:1562500 Positive Control: Jurkat cell lysate FBXW2 is supported by BioGPS gene expression data to be expressed in Jurkat

Western Blotting

Image 3. Host: Rabbit Target Name: FBXW2 Sample Type: Human Fetal Heart Antibody Dilution: 1.0ug/ml

Please check the [product details page](#) for more images. Overall 6 images are available for ABIN2774691.