

Datasheet for ABIN2774695
anti-FBXO25 antibody (N-Term)[Go to Product page](#)

2 Images

Overview

Quantity:	100 µL
Target:	FBXO25
Binding Specificity:	N-Term
Reactivity:	Human, Mouse, Rat, Dog, Zebrafish (Danio rerio), Horse, Guinea Pig, Cow, Rabbit, Pig
Host:	Rabbit
Clonality:	Polyclonal
Conjugate:	This FBXO25 antibody is un-conjugated
Application:	Western Blotting (WB)

Product Details

Immunogen:	The immunogen is a synthetic peptide directed towards the N terminal region of human FBXO25
Sequence:	LGAEFNRLDF SSAIQDIRRF NYVVKLLQLI AKSQLTSLSG VAQKNYFNIL
Predicted Reactivity:	Cow: 100%, Dog: 93%, Guinea Pig: 93%, Horse: 100%, Human: 100%, Mouse: 93%, Pig: 100%, Rabbit: 93%, Rat: 93%, Zebrafish: 93%
Characteristics:	This is a rabbit polyclonal antibody against FBXO25. It was validated on Western Blot using a cell lysate as a positive control.
Purification:	Affinity Purified

Target Details

Target:	FBXO25
---------	--------

Target Details

Alternative Name: FBXO25 ([FBXO25 Products](#))

Background: FBXO25 is a member of the F-box protein family which is characterized by an approximately 40 amino acid motif, the F-box. The F-box proteins constitute one of the four subunits of ubiquitin protein ligase complex called SCFs (SKP1-cullin-F-box), which function in phosphorylation-dependent ubiquitination. The F-box proteins are divided into 3 classes: Fbws containing WD-40 domains, Fbls containing leucine-rich repeats, and Fbxs containing either different protein-protein interaction modules or no recognizable motifs. The protein belongs to the Fbxs class. Three alternatively spliced transcript variants encoding distinct isoforms have been found for this gene. This gene encodes a member of the F-box protein family which is characterized by an approximately 40 amino acid motif, the F-box. The F-box proteins constitute one of the four subunits of ubiquitin protein ligase complex called SCFs (SKP1-cullin-F-box), which function in phosphorylation-dependent ubiquitination. The F-box proteins are divided into 3 classes: Fbws containing WD-40 domains, Fbls containing leucine-rich repeats, and Fbxs containing either different protein-protein interaction modules or no recognizable motifs. The protein encoded by this gene belongs to the Fbxs class. Three alternatively spliced transcript variants encoding distinct isoforms have been found for this gene.

Alias Symbols: FBX25, MGC20256, MGC51975

Protein Interaction Partner: SYTL2, ING3, TMA7, HP1BP3, ADRBK1, PRRG1, PRKG2, PRKCA, PPP1R8, PPID, PDGFRA, PCK1, ODF2, KRT8, KDR, IRS1, DNAJB2, HIP1, GTF2B, FKBP3, ELK1, EGFR, DCX, EID3, PRR15, APLF, TCEANC, WDSUB1, TRUB1, TCEAL2, TCP10L, ANKRD13A, C7orf50, RHBDD1, NSRP1, RABEP2, C11

Protein Size: 291

Molecular Weight: 34 kDa

Gene ID: 26260

NCBI Accession: [NM_012173](#), [NP_036305](#)

UniProt: [Q8TCJ0](#)

Application Details

Application Notes: Optimal working dilutions should be determined experimentally by the investigator.

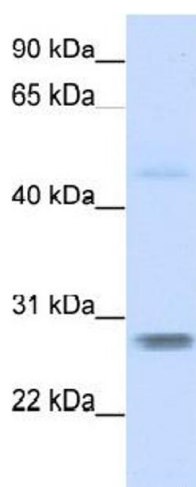
Comment: Antigen size: 291 AA

Restrictions: For Research Use only

Handling

Format:	Liquid
Concentration:	Lot specific
Buffer:	Liquid. Purified antibody supplied in 1x PBS buffer with 0.09 % (w/v) sodium azide and 2 % sucrose.
Preservative:	Sodium azide
Precaution of Use:	This product contains Sodium azide: a POISONOUS AND HAZARDOUS SUBSTANCE which should be handled by trained staff only.
Handling Advice:	Avoid repeated freeze-thaw cycles.
Storage:	-20 °C
Storage Comment:	For short term use, store at 2-8°C up to 1 week. For long term storage, store at -20°C in small aliquots to prevent freeze-thaw cycles.

Images

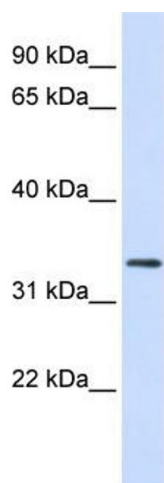


Western Blotting

Image 1. WB Suggested Anti-FBXO25

Antibody Titration: 0.2-1 µg/mL ELISA Titer: 1:12500

Positive Control: Human Brain



Western Blotting

Image 2. WB Suggested Anti-FBXO25 Antibody Titration:

0.2-1 µg/ml ELISA Titer: 1:312500 Positive Control: Human heart