



[Go to Product page](#)

Datasheet for ABIN2774696
anti-FBXO25 antibody (C-Term)

2 Images

Overview

Quantity:	100 µL
Target:	FBXO25
Binding Specificity:	C-Term
Reactivity:	Human, Mouse, Rat, Dog, Zebrafish (Danio rerio), Horse, Guinea Pig, Cow, Rabbit
Host:	Rabbit
Clonality:	Polyclonal
Conjugate:	This FBXO25 antibody is un-conjugated
Application:	Western Blotting (WB), Immunohistochemistry (IHC)

Product Details

Immunogen:	The immunogen is a synthetic peptide directed towards the C terminal region of human FBXO25
Sequence:	AKEQYGDTLH FCRHCSILFW KDSGHPCTAA DPDSCFTPVS PQHFIDLFKF
Predicted Reactivity:	Cow: 93%, Dog: 100%, Guinea Pig: 100%, Horse: 100%, Human: 100%, Mouse: 93%, Rabbit: 93%, Rat: 100%, Zebrafish: 100%
Characteristics:	This is a rabbit polyclonal antibody against FBXO25. It was validated on Western Blot and immunohistochemistry.
Purification:	Protein A purified

Target Details

Target:	FBXO25
---------	--------

Target Details

Alternative Name: [FBXO25 \(FBXO25 Products\)](#)

Background: FBXO25 is a member of the F-box protein family which is characterized by an approximately 40 amino acid motif, the F-box. The F-box proteins constitute one of the four subunits of ubiquitin protein ligase complex called SCFs (SKP1-cullin-F-box), which function in phosphorylation-dependent ubiquitination. The F-box proteins are divided into 3 classes: Fbws containing WD-40 domains, Fbls containing leucine-rich repeats, and Fbxs containing either different protein-protein interaction modules or no recognizable motifs. FBXO25 belongs to the Fbxs class.

Alias Symbols: FBX25, MGC20256, MGC51975

Protein Interaction Partner: SYTL2, ING3, TMA7, HP1BP3, ADRBK1, PRRG1, PRKG2, PRKCA, PPP1R8, PPID, PDGFRA, PCK1, ODF2, KRT8, KDR, IRS1, DNAJB2, HIP1, GTF2B, FKBP3, ELK1, EGFR, DCX, EID3, PRR15, APLF, TCEANC, WDSUB1, TRUB1, TCEAL2, TCP10L, ANKRD13A, C7orf50, RHBDD1, NSRP1, RABEP2, C11

Protein Size: 141

Molecular Weight: 16 kDa

Gene ID: 26260

NCBI Accession: [NM_012173](#)

UniProt: [Q8TCJ0](#)

Application Details

Application Notes: Optimal working dilutions should be determined experimentally by the investigator.

Comment: Antigen size: 141 AA

Restrictions: For Research Use only

Handling

Format: Liquid

Concentration: Lot specific

Buffer: Liquid. Purified antibody supplied in 1x PBS buffer with 0.09 % (w/v) sodium azide and 2 % sucrose.

Preservative: Sodium azide

Precaution of Use: This product contains Sodium azide: a POISONOUS AND HAZARDOUS SUBSTANCE which should be handled by trained staff only.

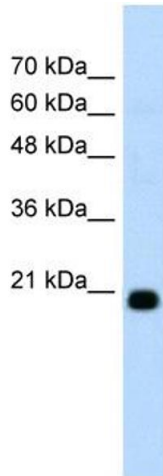
Handling

Handling Advice: Avoid repeated freeze-thaw cycles.

Storage: -20 °C

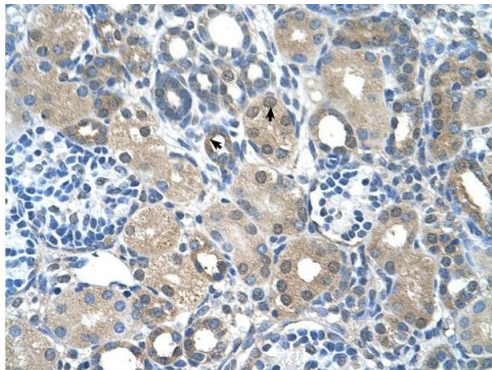
Storage Comment: For short term use, store at 2-8°C up to 1 week. For long term storage, store at -20°C in small aliquots to prevent freeze-thaw cycles.

Validation report #100039 for Immunocytochemistry (ICC)



Western Blotting

Image 1. WB Suggested Anti-FBXO25 Antibody Titration:
1.25µg/ml Positive Control: HepG2 cell lysate



Rabbit Anti-FBXO25 Antibody
Catalog Number: ARP43118
Lot Number: QC13283
Paraffin Embedded Tissue: Human Kidney
Cells with Positive label: Epithelial cells of renal tubule (Indicated with Arrows)
Antibody Concentration: 4.0-8.0 µg/ml
Magnification: 400X

Immunohistochemistry

Image 2. Human kidney