



[Go to Product page](#)

Datasheet for ABIN2774700

anti-FBX05 antibody (C-Term)

4 Images

1 Publication

Overview

Quantity:	100 µL
Target:	FBX05
Binding Specificity:	C-Term
Reactivity:	Human, Dog, Pig, Rabbit
Host:	Rabbit
Clonality:	Polyclonal
Conjugate:	This FBX05 antibody is un-conjugated
Application:	Western Blotting (WB)

Product Details

Immunogen:	The immunogen is a synthetic peptide directed towards the C terminal region of human FBX05
Sequence:	ASVQKSAAQT SLKKDAQTKL SNQGDQKGST YSRHNEFSEV AKTLKKNESL
Predicted Reactivity:	Dog: 85%, Human: 100%, Pig: 79%, Rabbit: 92%
Characteristics:	This is a rabbit polyclonal antibody against FBX05. It was validated on Western Blot using a cell lysate as a positive control.
Purification:	Affinity Purified

Target Details

Target:	FBX05
Alternative Name:	FBX05 (FBX05 Products)

Target Details

Background: FBXO5 is a member of the F-box protein family which is characterized by an approximately 40 amino acid motif, the F-box. The F-box proteins constitute one of the four subunits of the ubiquitin protein ligase complex called SCFs (SKP1-cullin-F-box), which function in phosphorylation-dependent ubiquitination. The F-box proteins are divided into 3 classes: Fbws containing WD-40 domains, Fbls containing leucine-rich repeats, and Fbxs containing either different protein-protein interaction modules or no recognizable motifs. The protein belongs to the Fbxs class and is similar to xenopus early mitotic inhibitor-1 (Emi1), which is a mitotic regulator that interacts with Cdc20 and inhibits the anaphase promoting complex. Alternatively spliced transcript variants encoding different isoforms have been identified. This gene encodes a member of the F-box protein family which is characterized by an approximately 40 amino acid motif, the F-box. The F-box proteins constitute one of the four subunits of the ubiquitin protein ligase complex called SCFs (SKP1-cullin-F-box), which function in phosphorylation-dependent ubiquitination. The F-box proteins are divided into 3 classes: Fbws containing WD-40 domains, Fbls containing leucine-rich repeats, and Fbxs containing either different protein-protein interaction modules or no recognizable motifs. The protein encoded by this gene belongs to the Fbxs class. This protein is similar to xenopus early mitotic inhibitor-1 (Emi1), which is a mitotic regulator that interacts with Cdc20 and inhibits the anaphase promoting complex. Publication Note: This RefSeq record includes a subset of the publications that are available for this gene. Please see the Entrez Gene record to access additional publications.

Alias Symbols: EMI1, FBX5, Fbxo31

Protein Interaction Partner: FBXW11, UBE2S, SKP1, UBC, TPM3, NEDD8, BRCA1, BARD1, ANAPC1, ANAPC11, ANAPC7, ANAPC5, FZR1, ANAPC4, ANAPC2, CDC16, CDC23, CDC27, CDC20, CDK1, MYC, Gm9174, BTRC, PLK1, EVI5,

Protein Size: 447

Molecular Weight: 50 kDa

Gene ID: 26271

NCBI Accession: [NM_012177](#), [NP_036309](#)

UniProt: [Q9UKT4](#)

Pathways: [Mitotic G1-G1/S Phases](#)

Application Details

Application Notes: Optimal working dilutions should be determined experimentally by the investigator.

Comment: Antigen size: 447 AA

Application Details

Restrictions: For Research Use only

Handling

Format: Liquid

Concentration: Lot specific

Buffer: Liquid. Purified antibody supplied in 1x PBS buffer with 0.09 % (w/v) sodium azide and 2 % sucrose.

Preservative: Sodium azide

Precaution of Use: This product contains Sodium azide: a POISONOUS AND HAZARDOUS SUBSTANCE which should be handled by trained staff only.

Handling Advice: Avoid repeated freeze-thaw cycles.

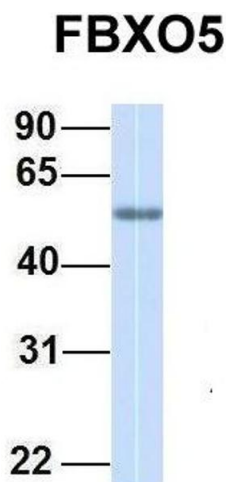
Storage: -20 °C

Storage Comment: For short term use, store at 2-8°C up to 1 week. For long term storage, store at -20°C in small aliquots to prevent freeze-thaw cycles.

Publications

Product cited in: Storrs, Silverstein: "PATJ, a tight junction-associated PDZ protein, is a novel degradation target of high-risk human papillomavirus E6 and the alternatively spliced isoform 18 E6." in: **Journal of virology**, Vol. 81, Issue 8, pp. 4080-90, (2007) ([PubMed](#)).

Images



Western Blotting

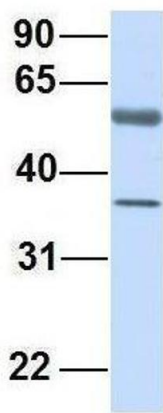
Image 1. Host: Rabbit Target Name: FBXO5 Sample Type: Human Adult Placenta Antibody Dilution: 1.0ug/ml



Western Blotting

Image 2. WB Suggested Anti-FBXO5 Antibody Titration: 0.2-1 ug/ml ELISA Titer: 1:1562500 Positive Control: HepG2 cell lysate

FBXO5



Western Blotting

Image 3. Host: Rabbit Target Name: FBXO5 Sample Type: Human Fetal Lung Antibody Dilution: 1.0ug/ml

Please check the [product details page](#) for more images. Overall 4 images are available for ABIN2774700.