

Datasheet for ABIN2774703  
**anti-FBXL7 antibody (N-Term)**[Go to Product page](#)

## 3 Images

## Overview

Quantity:	100 µL
Target:	FBXL7
Binding Specificity:	N-Term
Reactivity:	Human, Mouse, Rat, Guinea Pig, Cow, Horse, Rabbit
Host:	Rabbit
Clonality:	Polyclonal
Conjugate:	This FBXL7 antibody is un-conjugated
Application:	Western Blotting (WB), Immunohistochemistry (IHC)

## Product Details

Immunogen:	The immunogen is a synthetic peptide directed towards the N terminal region of human FBXL7
Sequence:	IRLASRPQKE QASIDRLPDH SMVQIFSFLP TNQLCRCARV CRRWYNLAWD
Predicted Reactivity:	Cow: 92%, Guinea Pig: 100%, Horse: 93%, Human: 100%, Mouse: 100%, Rabbit: 92%, Rat: 100%
Characteristics:	This is a rabbit polyclonal antibody against FBXL7. It was validated on Western Blot and immunohistochemistry.
Purification:	Protein A purified

## Target Details

Target:	FBXL7
Alternative Name:	FBXL7 ( <a href="#">FBXL7 Products</a> )

## Target Details

Background:	<p>FBXL7 is a member of the F-box protein family which is characterized by an approximately 40 amino acid motif, the F-box. The F-box proteins constitute one of the four subunits of ubiquitin protein ligase complex called SCFs (SKP1-cullin-F-box), which function in phosphorylation-dependent ubiquitination. The F-box proteins are divided into 3 classes: Fbws containing WD-40 domains, Fbls containing leucine-rich repeats, and Fbxs containing either different protein-protein interaction modules or no recognizable motifs. The protein belongs to the Fbls class and, in addition to an F-box, contains several tandem leucine-rich repeats. This gene encodes a member of the F-box protein family which is characterized by an approximately 40 amino acid motif, the F-box. The F-box proteins constitute one of the four subunits of ubiquitin protein ligase complex called SCFs (SKP1-cullin-F-box), which function in phosphorylation-dependent ubiquitination. The F-box proteins are divided into 3 classes: Fbws containing WD-40 domains, Fbls containing leucine-rich repeats, and Fbxs containing either different protein-protein interaction modules or no recognizable motifs. The protein encoded by this gene belongs to the Fbls class and, in addition to an F-box, contains several tandem leucine-rich repeats.</p> <p>Alias Symbols: FBL6, FBL7</p> <p>Protein Interaction Partner: WDR48, AHCYL1, ZRANB2, APP, SKP1,</p> <p>Protein Size: 491</p>
-------------	--------------------------------------------------------------------------------------------------------------------------------------------------------------------------------------------------------------------------------------------------------------------------------------------------------------------------------------------------------------------------------------------------------------------------------------------------------------------------------------------------------------------------------------------------------------------------------------------------------------------------------------------------------------------------------------------------------------------------------------------------------------------------------------------------------------------------------------------------------------------------------------------------------------------------------------------------------------------------------------------------------------------------------------------------------------------------------------------------------------------------------------------------------------------------------------------------------------------------------------------------------------------------------------------------------------------------------------------------------------------------------------------------------------------------------------------------------------------------------------------

Molecular Weight:	54 kDa
-------------------	--------

Gene ID:	23194
----------	-------

NCBI Accession:	<a href="#">NM_012304</a> , <a href="#">NP_036436</a>
-----------------	-------------------------------------------------------

UniProt:	<a href="#">Q9UJT9</a>
----------	------------------------

## Application Details

Application Notes:	Optimal working dilutions should be determined experimentally by the investigator.
--------------------	------------------------------------------------------------------------------------

Comment:	Antigen size: 491 AA
----------	----------------------

Restrictions:	For Research Use only
---------------	-----------------------

## Handling

Format:	Liquid
---------	--------

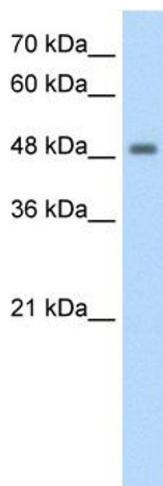
Concentration:	Lot specific
----------------	--------------

Buffer:	Liquid. Purified antibody supplied in 1x PBS buffer with 0.09 % (w/v) sodium azide and 2 % sucrose.
---------	-----------------------------------------------------------------------------------------------------

## Handling

Preservative:	Sodium azide
Precaution of Use:	This product contains Sodium azide: a POISONOUS AND HAZARDOUS SUBSTANCE which should be handled by trained staff only.
Handling Advice:	Avoid repeated freeze-thaw cycles.
Storage:	-20 °C
Storage Comment:	For short term use, store at 2-8°C up to 1 week. For long term storage, store at -20°C in small aliquots to prevent freeze-thaw cycles.

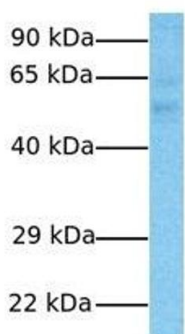
## Images



### Western Blotting

**Image 1.** WB Suggested Anti-FBXL7 Antibody Titration:  
1.25ug/ml Positive Control: HepG2 cell lysate

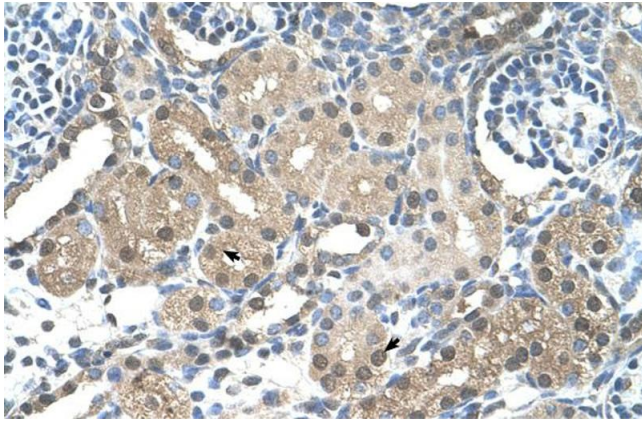
## FBXL7



Host: Rabbit  
Target Name: FBXL7  
Sample Type: Human Fetal Liver  
Antibody Dilution: 1ug/ml

### Western Blotting

**Image 2.** Host: Rabbit Target Name: FBXL7 Sample Tissue:  
Human Fetal Liver Antibody Dilution: 1.0ug/ml



#### Immunohistochemistry

**Image 3.** Human kidney