

Datasheet for ABIN2774719

anti-UBE3C antibody (N-Term)



[Go to Product page](#)

1 Image

Overview

Quantity:	100 µL
Target:	UBE3C
Binding Specificity:	N-Term
Reactivity:	Human, Mouse, Rat, Cow, Guinea Pig, Rabbit, Zebrafish (Danio rerio), Dog
Host:	Rabbit
Clonality:	Polyclonal
Conjugate:	This UBE3C antibody is un-conjugated
Application:	Western Blotting (WB)

Product Details

Immunogen:	The immunogen is a synthetic peptide directed towards the N-terminal region of Human UBE3C
Sequence:	MFSFEGDFKT RPKVSLGGAS RKYSIQRSAF DRCATLSQSG GAFPIANGPN
Predicted Reactivity:	Cow: 100%, Dog: 100%, Guinea Pig: 100%, Human: 100%, Mouse: 100%, Rabbit: 100%, Rat: 100%, Zebrafish: 100%
Characteristics:	This is a rabbit polyclonal antibody against UBE3C. It was validated on Western Blot.
Purification:	Affinity Purified

Target Details

Target:	UBE3C
Alternative Name:	UBE3C (UBE3C Products)

Target Details

Background:	<p>E3 ubiquitin-protein ligase that accepts ubiquitin from the E2 ubiquitin-conjugating enzyme UBE2D1 in the form of a thioester and then directly transfers the ubiquitin to targeted substrates. UBE3C can assemble unanchored poly-ubiquitin chains in either 'Lys-29'- or 'Lys-48'-linked polyubiquitin chains. It has preference for 'Lys-48' linkages. It can target itself for ubiquitination in vitro and may promote its own degradation in vivo.</p> <p>Protein Interaction Partner: UBC, GOLGA2, PSMD14, SHFM1, UBE2D1, PSMD2, PSMC5, PANK4, EE2K, WDR92, TLK1, MTA2, ECT2, CPEB4, THOC7, RBM15, THOC2, WDR74, KDM1A, USP13, UTRN, PHKA2, APP, UBE2L3, UBE3C, PSMA2, ELAVL1, RAD21, MYC, CAND2, PSMD6,</p> <p>Protein Size: 404</p>
-------------	--

Molecular Weight:	44 kDa
-------------------	--------

Gene ID:	9690
----------	------

Application Details

Application Notes:	Optimal working dilution should be determined by the investigator.
--------------------	--

Restrictions:	For Research Use only
---------------	-----------------------

Handling

Format:	Liquid
---------	--------

Concentration:	1 mg/mL
----------------	---------

Buffer:	Liquid. Purified antibody supplied in 1x PBS buffer with 0.09 % (w/v) sodium azide and 2 % sucrose.
---------	---

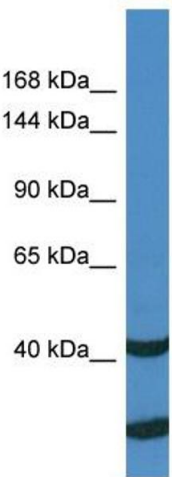
Preservative:	Sodium azide
---------------	--------------

Precaution of Use:	This product contains Sodium azide: a POISONOUS AND HAZARDOUS SUBSTANCE which should be handled by trained staff only.
--------------------	--

Handling Advice:	Avoid repeat freeze-thaw cycles.
------------------	----------------------------------

Storage:	-20 °C
----------	--------

Storage Comment:	For short term use, store at 2-8°C up to 1 week. For long term storage, store at -20°C in small aliquots to prevent freeze-thaw cycles.
------------------	---



Western Blotting

Image 1. Host: Rabbit Target Name: UBE3C Sample Type: THP-1 whole cell lysates Antibody Dilution: 1.0ug/ml