

Datasheet for ABIN2774722

anti-ANAPC10 antibody (N-Term)



[Go to Product page](#)

1 Image

1 Publication

Overview

Quantity:	100 µL
Target:	ANAPC10
Binding Specificity:	N-Term
Reactivity:	Human, Mouse, Rat, Cow, Dog, Guinea Pig, Horse, Rabbit, Zebrafish (Danio rerio)
Host:	Rabbit
Clonality:	Polyclonal
Conjugate:	This ANAPC10 antibody is un-conjugated
Application:	Western Blotting (WB)

Product Details

Immunogen:	The immunogen is a synthetic peptide directed towards the N terminal region of human ANAPC10
Sequence:	MTTPNKTPPG ADPKQLERTG TVREIGSQAV WSLSSCKPGF GVDQLRDDNL
Predicted Reactivity:	Cow: 100%, Dog: 100%, Guinea Pig: 100%, Horse: 100%, Human: 100%, Mouse: 100%, Rabbit: 100%, Rat: 100%, Zebrafish: 85%
Characteristics:	This is a rabbit polyclonal antibody against ANAPC10. It was validated on Western Blot using a cell lysate as a positive control.
Purification:	Affinity Purified

Target Details

Target:	ANAPC10
---------	---------

Target Details

Alternative Name:	ANAPC10 (ANAPC10 Products)
Background:	<p>ANAPC10 is a component of the anaphase promoting complex/cyclosome (APC/C), a cell cycle-regulated E3 ubiquitin ligase that controls progression through mitosis and the G1 phase of the cell cycle. The APC/C complex acts by mediating ubiquitination and sub</p> <p>Alias Symbols: APC10, DKFZP564L0562, DOC1</p> <p>Protein Interaction Partner: ANAPC4, DCPS, UBC, ANAPC15, MDC1, TP53BP1, LIG4, ANAPC1, ANAPC7, ANAPC2, CDC16, CDC23, CDC27, Gm9174, Cdc20, Bub1b, PPP2R1A, APC2, ANAPC11, SMAD3, SMAD2, LRP1, LRP8, LRP2,</p> <p>Protein Size: 185</p>
Molecular Weight:	21 kDa
Gene ID:	10393
NCBI Accession:	NM_014885 , NP_055700
UniProt:	Q9UM13
Pathways:	M Phase

Application Details

Application Notes:	Optimal working dilutions should be determined experimentally by the investigator.
Comment:	Antigen size: 185 AA
Restrictions:	For Research Use only

Handling

Format:	Liquid
Concentration:	Lot specific
Buffer:	Liquid. Purified antibody supplied in 1x PBS buffer with 0.09 % (w/v) sodium azide and 2 % sucrose.
Preservative:	Sodium azide
Precaution of Use:	This product contains Sodium azide: a POISONOUS AND HAZARDOUS SUBSTANCE which should be handled by trained staff only.
Handling Advice:	Avoid repeated freeze-thaw cycles.
Storage:	-20 °C

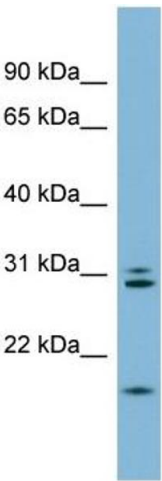
Handling

Storage Comment: For short term use, store at 2-8°C up to 1 week. For long term storage, store at -20°C in small aliquots to prevent freeze-thaw cycles.

Publications

Product cited in: Bortnik, Choutka, Horlings, Leung, Baker, Lebovitz, Dragowska, Go, Bally, Minchinton, Gelmon, Gorski: "Identification of breast cancer cell subtypes sensitive to ATG4B inhibition." in: **Oncotarget**, Vol. 7, Issue 41, pp. 66970-66988, (2016) ([PubMed](#)).

Images



Western Blotting

Image 1. WB Suggested Anti-ANAPC10 Antibody Titration: 0.2-1 ug/ml ELISA Titer: 1:312500 Positive Control: Human Spleen