



[Go to Product page](#)

Datasheet for ABIN2774739

anti-HERC5 antibody (Middle Region)

4 Images

Overview

Quantity:	100 µL
Target:	HERC5
Binding Specificity:	Middle Region
Reactivity:	Human, Cow, Rat, Horse, Rabbit, Pig
Host:	Rabbit
Clonality:	Polyclonal
Conjugate:	This HERC5 antibody is un-conjugated
Application:	Western Blotting (WB), Immunohistochemistry (IHC)

Product Details

Immunogen:	The immunogen is a synthetic peptide directed towards the middle region of human HERC5
Sequence:	FHPEELKDVI VGNTDYDWKT FEKNARYEPG YNSSHPTIVM FWKAFHKLTL
Predicted Reactivity:	Cow: 79%, Horse: 79%, Human: 100%, Pig: 79%, Rabbit: 86%, Rat: 79%
Characteristics:	This is a rabbit polyclonal antibody against HERC5. It was validated on Western Blot using a cell lysate as a positive control.
Purification:	Affinity Purified

Target Details

Target:	HERC5
Alternative Name:	HERC5 (HERC5 Products)

Target Details

Background: HERC5 is a member of the HERC family of ubiquitin ligases. It contains a HECT domain and five RCC1 repeats. Pro-inflammatory cytokines upregulate expression of HERC5 protein in endothelial cells. The protein localizes to the cytoplasm and perinuclear region and functions as an interferon-induced E3 protein ligase that mediates ISGylation of protein targets. This gene is a member of the HERC family of ubiquitin ligases and encodes a protein with a HECT domain and five RCC1 repeats. Pro-inflammatory cytokines upregulate expression of this gene in endothelial cells. The protein localizes to the cytoplasm and perinuclear region and functions as an interferon-induced E3 protein ligase that mediates ISGylation of protein targets. The gene lies in a cluster of HERC family genes on chromosome 4.

Alias Symbols: CEB1, CEBP1

Protein Interaction Partner: UBC, SMAD4, UBE2D1, gag, ISG15, TXNRD1, IRF3, HSPA8, CTNNA1, HERC5, SIRT7, STK38, PITX2, ERCC2, CCND1, CCNE1, CCNB1, CCNA2, NME2, CDKN1A,

Protein Size: 1024

Molecular Weight: 117 kDa

Gene ID: 51191

NCBI Accession: [NM_016323](#), [NP_057407](#)

UniProt: [Q69G20](#)

Application Details

Application Notes: Optimal working dilutions should be determined experimentally by the investigator.

Comment: Antigen size: 1024 AA

Restrictions: For Research Use only

Handling

Format: Liquid

Concentration: Lot specific

Buffer: Liquid. Purified antibody supplied in 1x PBS buffer with 0.09 % (w/v) sodium azide and 2 % sucrose.

Preservative: Sodium azide

Precaution of Use: This product contains Sodium azide: a POISONOUS AND HAZARDOUS SUBSTANCE which should be handled by trained staff only.

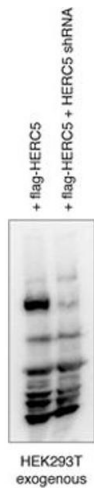
Handling

Handling Advice: Avoid repeated freeze-thaw cycles.

Storage: -20 °C

Storage Comment: For short term use, store at 2-8°C up to 1 week. For long term storage, store at -20°C in small aliquots to prevent freeze-thaw cycles.

Images



HERC5 (ARP43213_P050)

WB

Sample type: HEK293T cells

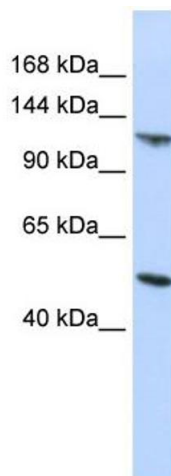
Primary dilution: 1:1,000

Secondary dilution: 1,1,000

Application Data in Forum

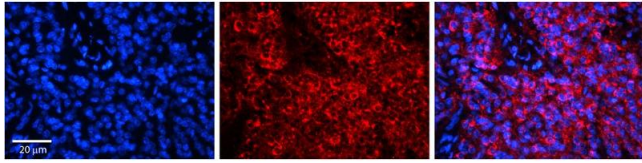
Submitted by:
Karin Hochrainer
Weill Cornell Medical College

Image 1.



Western Blotting

Image 2. WB Suggested Anti-HERC5 Antibody Titration: 0.2-1 ug/ml ELISA Titer: 1:312500 Positive Control: HepG2 cell lysate



Immunohistochemistry

Image 3. Rabbit Anti-HERC5 Antibody Formalin Fixed Paraffin Embedded Tissue: Human Pineal Tissue Observed Staining: Cytoplasmic in cell bodies and processes of pinealocytes Primary Antibody Concentration: 1:100 Other Working Concentrations: 1/600 Secondary Antibody: Donkey anti-Rabbit-Cy3 Secondary Antibody Concentration: 1:200 Magnification: 20X Exposure Time: 0.5 - 2.0 sec

Please check the [product details page](#) for more images. Overall 4 images are available for ABIN2774739.