

Datasheet for ABIN2774756
anti-MSL2 antibody (N-Term)



[Go to Product page](#)

1 Image

Overview

Quantity:	100 µL
Target:	MSL2
Binding Specificity:	N-Term
Reactivity:	Human, Mouse, Rat, Cow, Dog, Guinea Pig, Horse, Rabbit
Host:	Rabbit
Clonality:	Polyclonal
Conjugate:	This MSL2 antibody is un-conjugated
Application:	Western Blotting (WB)

Product Details

Immunogen:	The immunogen is a synthetic peptide directed towards the N terminal region of human MSL2L1
Sequence:	NPVNATALYI SASRLVLNYD PGDPKAFTEI NRLLPYFRQS LSCCVCGHLL
Predicted Reactivity:	Cow: 100%, Dog: 100%, Guinea Pig: 100%, Horse: 100%, Human: 100%, Mouse: 100%, Rabbit: 100%, Rat: 100%
Characteristics:	This is a rabbit polyclonal antibody against MSL2L1. It was validated on Western Blot using a cell lysate as a positive control.
Purification:	Affinity Purified

Target Details

Target:	MSL2
---------	------

Target Details

Alternative Name:	MSL2L1 (MSL2 Products)
Background:	<p>MSL2L1 is the component of histone acetyltransferase complex responsible for the majority of histone H4 acetylation at lysine 16 which is implicated in the formation of higher-order chromatin structure.</p> <p>Alias Symbols: FLJ10546, KIAA1585, MSL-2, RNF184, MSL2L1</p> <p>Protein Interaction Partner: FAM96B, RNF20, PAF1, RNF40, HIST2H2BE, UBE2D3, CDK9, TRIM8, MMS19, MSL1, HIST2H3C, HIST1H4A, HIST2H2AC, HIST2H2AA3, Kat8, TP53, MSL3, YWHAZ, YWHAG, YWHAЕ,</p> <p>Protein Size: 577</p>
Molecular Weight:	62 kDa
Gene ID:	55167
NCBI Accession:	NM_018133 , NP_060603
UniProt:	Q9HCI7

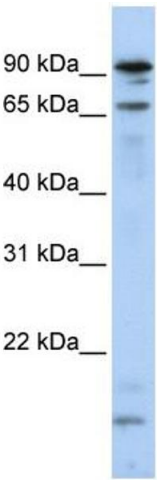
Application Details

Application Notes:	Optimal working dilutions should be determined experimentally by the investigator.
Comment:	Antigen size: 577 AA
Restrictions:	For Research Use only

Handling

Format:	Liquid
Concentration:	Lot specific
Buffer:	Liquid. Purified antibody supplied in 1x PBS buffer with 0.09 % (w/v) sodium azide and 2 % sucrose.
Preservative:	Sodium azide
Precaution of Use:	This product contains Sodium azide: a POISONOUS AND HAZARDOUS SUBSTANCE which should be handled by trained staff only.
Handling Advice:	Avoid repeated freeze-thaw cycles.
Storage:	-20 °C
Storage Comment:	For short term use, store at 2-8°C up to 1 week. For long term storage, store at -20°C in small

aliquots to prevent freeze-thaw cycles.



Western Blotting

Image 1. WB Suggested Anti-MSL2L1 Antibody Titration: 0.2-1 ug/ml ELISA Titer: 1:1562500 Positive Control: Hela cell lysate