

Datasheet for ABIN2774757
anti-CHFR antibody (N-Term)[Go to Product page](#)

2 Images

Overview

Quantity:	100 µL
Target:	CHFR
Binding Specificity:	N-Term
Reactivity:	Human, Mouse, Rat, Cow, Rabbit, Zebrafish (Danio rerio), Dog, Horse, Guinea Pig
Host:	Rabbit
Clonality:	Polyclonal
Conjugate:	This CHFR antibody is un-conjugated
Application:	Western Blotting (WB), Immunohistochemistry (IHC)

Product Details

Immunogen:	The immunogen is a synthetic peptide directed towards the N terminal region of human CHFR
Sequence:	REWTIGRRRG CDLSFPSNKL VSGDHCRIVV DEKSGQVTLE DTSTSGTVIN
Predicted Reactivity:	Cow: 93%, Dog: 93%, Guinea Pig: 100%, Horse: 93%, Human: 100%, Mouse: 100%, Rabbit: 100%, Rat: 100%, Zebrafish: 86%
Characteristics:	This is a rabbit polyclonal antibody against CHFR. It was validated on Western Blot using a cell lysate as a positive control.
Purification:	Affinity Purified

Target Details

Target:	CHFR
---------	------

Target Details

Alternative Name:	CHFR (CHFR Products)
Background:	<p>CHFR is an E3 ubiquitin-protein ligase required to transiently arrest cells in early prophase when they are exposed to microtubule poisons. It acts in early prophase before chromosome condensation, when the centrosome moves apart from each other along the periphery of the nucleus. CHFR probably promotes the formation of 'Lys-63'-linked polyubiquitin chains and functions with the specific ubiquitin-conjugating UBC13-MMS2 (UBE2N-UBE2V2) heterodimer. Substrates that are polyubiquitinated at 'Lys-63' are usually not targeted for degradation, but are rather involved in signaling cellular stress. This suggests that it may be involved in signaling the presence of mitotic stress caused by microtubule poisons.</p> <p>Alias Symbols: FLJ10796, FLJ33629, RNF116, RNF196</p> <p>Protein Interaction Partner: USP7, VIM, UBE2D2, AURKA, HLTF, RANBP2, PLK1, PCNA, MCM2, HDAC2, HDAC1, CDK5, CDC20, PARP1, SIN3A, CHFR, UBC13, SUMO1, UBE2I, LRP1, UBE2V1, UBE2N, UBE2D1, TRIM9, RNF125, CBLC, RNF7, RELA, RNF8, HIST2H2BE, HIST2H2AC, UBC, SMARCD1, SMARCB1, SMARCA4, KIF22,</p> <p>Protein Size: 623</p>
Molecular Weight:	69 kDa
Gene ID:	55743
NCBI Accession:	NM_018223 , NP_060693
UniProt:	Q96EP1

Application Details

Application Notes:	Optimal working dilutions should be determined experimentally by the investigator.
Comment:	Antigen size: 623 AA
Restrictions:	For Research Use only

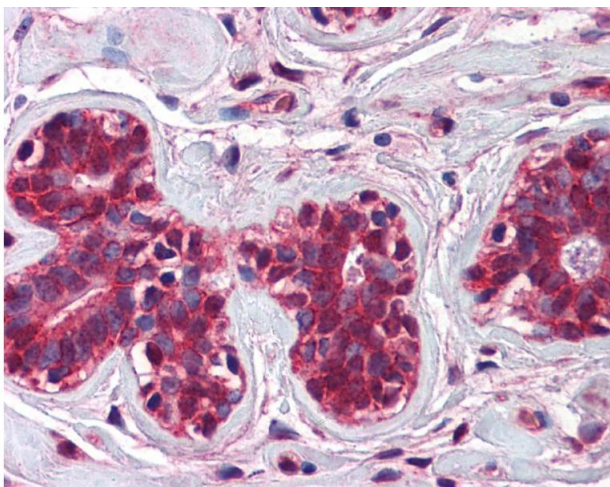
Handling

Format:	Liquid
Concentration:	Lot specific
Buffer:	Liquid. Purified antibody supplied in 1x PBS buffer with 0.09 % (w/v) sodium azide and 2 % sucrose.
Preservative:	Sodium azide

Handling

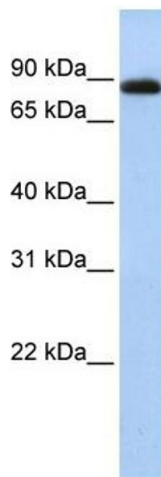
Precaution of Use:	This product contains Sodium azide: a POISONOUS AND HAZARDOUS SUBSTANCE which should be handled by trained staff only.
Handling Advice:	Avoid repeated freeze-thaw cycles.
Storage:	-20 °C
Storage Comment:	For short term use, store at 2-8°C up to 1 week. For long term storage, store at -20°C in small aliquots to prevent freeze-thaw cycles.

Images



Immunohistochemistry

Image 1.



Western Blotting

Image 2. WB Suggested Anti-CHFR Antibody Titration: 0.2-1 ug/ml ELISA Titer: 1:312500 Positive Control: HepG2 cell lysate CHFR is supported by BioGPS gene expression data to be expressed in HepG2