

Datasheet for ABIN2774760  
**anti-RC3H2 antibody (Middle Region)**

## 5 Images

[Go to Product page](#)

## Overview

Quantity:	100 µL
Target:	RC3H2
Binding Specificity:	Middle Region
Reactivity:	Human, Horse, Mouse, Cow, Rabbit, Dog, Rat, Guinea Pig
Host:	Rabbit
Clonality:	Polyclonal
Conjugate:	This RC3H2 antibody is un-conjugated
Application:	Western Blotting (WB)

## Product Details

Immunogen:	The immunogen is a synthetic peptide directed towards the middle region of human RC3H2
Sequence:	YSRKGHETPQ PQPNSKYKTS MCRDLRQQGG CPRGTNCTFA HSQEELEKYR
Predicted Reactivity:	Cow: 100%, Dog: 100%, Guinea Pig: 100%, Horse: 100%, Human: 100%, Mouse: 100%, Rabbit: 100%, Rat: 100%
Characteristics:	This is a rabbit polyclonal antibody against RC3H2. It was validated on Western Blot using a cell lysate as a positive control.
Purification:	Affinity Purified

## Target Details

Target:	RC3H2
---------	-------

## Target Details

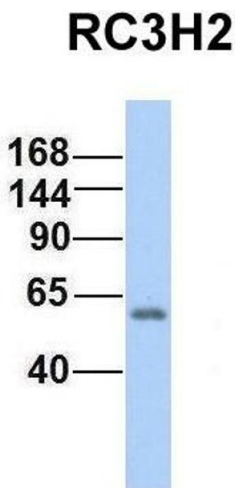
Alternative Name:	RC3H2 ( <a href="#">RC3H2 Products</a> )
Background:	<p>The function of this protein remains unknown.</p> <p>Alias Symbols: FLJ20301, FLJ20713, MGC52176, MNAB, RNF164</p> <p>Protein Interaction Partner: UBC, TRIM8, ELAVL1, UBE2N, UBE2I,</p> <p>Protein Size: 1064</p>
Molecular Weight:	118 kDa
Gene ID:	54542
NCBI Accession:	<a href="#">NM_018835</a> , <a href="#">NP_061323</a>
UniProt:	<a href="#">Q9HBD1</a>

## Application Details

Application Notes:	Optimal working dilutions should be determined experimentally by the investigator.
Comment:	Antigen size: 1064 AA
Restrictions:	For Research Use only

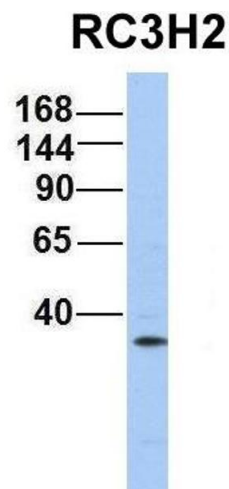
## Handling

Format:	Liquid
Concentration:	Lot specific
Buffer:	Liquid. Purified antibody supplied in 1x PBS buffer with 0.09 % (w/v) sodium azide and 2 % sucrose.
Preservative:	Sodium azide
Precaution of Use:	This product contains Sodium azide: a POISONOUS AND HAZARDOUS SUBSTANCE which should be handled by trained staff only.
Handling Advice:	Avoid repeated freeze-thaw cycles.
Storage:	-20 °C
Storage Comment:	For short term use, store at 2-8°C up to 1 week. For long term storage, store at -20°C in small aliquots to prevent freeze-thaw cycles.



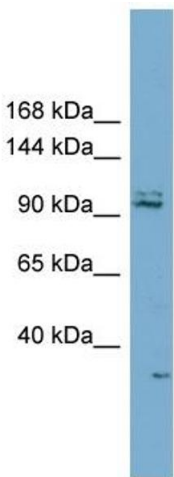
**Western Blotting**

**Image 1.** Host: Rabbit Target Name: RC3H2 Sample Type: Human Fetal Lung Antibody Dilution: 1.0ug/ml



**Western Blotting**

**Image 2.** Host: Rabbit Target Name: RC3H2 Sample Type: 721\_B Antibody Dilution: 1.0ug/ml RC3H2 is strongly supported by BioGPS gene expression data to be expressed in Human 721\_B cells



**Western Blotting**

**Image 3.** WB Suggested Anti-RC3H2 Antibody Titration: 0.2-1 ug/ml Positive Control: PANC1 cell lysate

Please check the [product details page](#) for more images. Overall 5 images are available for ABIN2774760.