

Datasheet for ABIN2774765
anti-RAD18 antibody (Middle Region)



[Go to Product page](#)

1 Image

1 Publication

Overview

Quantity:	100 µL
Target:	RAD18
Binding Specificity:	Middle Region
Reactivity:	Human, Rat, Mouse, Pig, Rabbit, Cow, Dog, Horse, Guinea Pig
Host:	Rabbit
Clonality:	Polyclonal
Conjugate:	This RAD18 antibody is un-conjugated
Application:	Western Blotting (WB)

Product Details

Immunogen:	The immunogen is a synthetic peptide directed towards the middle region of human RAD18
Sequence:	KQVTKVDPCV CGVNIPESHI NKHLDSCLSR EEKKESSLRSS VHKRKPLPKT
Predicted Reactivity:	Cow: 100%, Dog: 86%, Guinea Pig: 93%, Horse: 100%, Human: 100%, Mouse: 100%, Pig: 100%, Rabbit: 100%, Rat: 100%
Characteristics:	This is a rabbit polyclonal antibody against RAD18. It was validated on Western Blot using a cell lysate as a positive control.
Purification:	Affinity Purified

Target Details

Target:	RAD18
---------	-------

Target Details

Alternative Name: RAD18 ([RAD18 Products](#))

Background: RAD18 is highly similar to *S. cerevisiae* DNA damage repair protein Rad18. Yeast Rad18 functions through its interaction with Rad6, which is an ubiquitin-conjugating enzyme required for post-replication repair of damaged DNA. Similar to its yeast counterpart, RAD18 is able to interact with the human homolog of yeast Rad6 protein through a conserved ring-finger motif. Mutation of this motif results in defective replication of UV-damaged DNA and hypersensitivity to multiple mutagens. The protein encoded by this gene is highly similar to *S. cerevisiae* DNA damage repair protein Rad18. Yeast Rad18 functions through its interaction with Rad6, which is an ubiquitin-conjugating enzyme required for post-replication repair of damaged DNA. Similar to its yeast counterpart, this protein is able to interact with the human homolog of yeast Rad6 protein through a conserved ring-finger motif. Mutation of this motif results in defective replication of UV-damaged DNA and hypersensitivity to multiple mutagens. Publication Note: This RefSeq record includes a subset of the publications that are available for this gene. Please see the Entrez Gene record to access additional publications.

Alias Symbols: RNF73

Protein Interaction Partner: TAX1BP1, UBC, SHPRH, RAD18, SIVA1, USP2, UBE2B, UBE2A, HLTF, PCNA, BPLF1, USP5, DBF4, BRCA1, DZIP3, POLH, DTL, Ankrd32, MLKL, ECT2, RPL10A, TRIM23, PCGF6, TRIM8, RFC2, CPD, SPRTN, ZMYM2, MAPK8, POLN, WRNIP1, gag-pol, ORC2, SUMO2, POLK, NBN, Smc6, HIST1H2A

Protein Size: 495

Molecular Weight: 56 kDa

Gene ID: 56852

NCBI Accession: [NM_020165](#), [NP_064550](#)

UniProt: [Q9NS91](#)

Application Details

Application Notes: Optimal working dilutions should be determined experimentally by the investigator.

Comment: Antigen size: 495 AA

Restrictions: For Research Use only

Handling

Format: Liquid

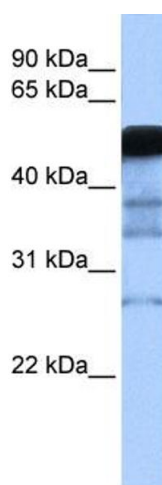
Handling

Concentration:	Lot specific
Buffer:	Liquid. Purified antibody supplied in 1x PBS buffer with 0.09 % (w/v) sodium azide and 2 % sucrose.
Preservative:	Sodium azide
Precaution of Use:	This product contains Sodium azide: a POISONOUS AND HAZARDOUS SUBSTANCE which should be handled by trained staff only.
Handling Advice:	Avoid repeated freeze-thaw cycles.
Storage:	-20 °C
Storage Comment:	For short term use, store at 2-8°C up to 1 week. For long term storage, store at -20°C in small aliquots to prevent freeze-thaw cycles.

Publications

Product cited in:	Tsuji, Watanabe, Araki, Shinohara, Yamagata, Tsurimoto, Hanaoka, Yamamura, Yamaizumi, Tateishi: "Recognition of forked and single-stranded DNA structures by human RAD18 complexed with RAD6B protein triggers its recruitment to stalled replication forks." in: Genes to cells : devoted to molecular & cellular mechanisms , Vol. 13, Issue 4, pp. 343-54, (2008) (PubMed).
-------------------	---

Images



Western Blotting

Image 1. WB Suggested Anti-RAD18 Antibody Titration: 0.2-1 ug/ml Positive Control: 721_B cell lysate