



[Go to Product page](#)

Datasheet for ABIN2774769

anti-HACE1 antibody (Middle Region)

2 Images

Overview

Quantity:	100 µL
Target:	HACE1
Binding Specificity:	Middle Region
Reactivity:	Human, Mouse, Rat, Guinea Pig, Rabbit, Cow, Dog, Horse
Host:	Rabbit
Clonality:	Polyclonal
Conjugate:	This HACE1 antibody is un-conjugated
Application:	Western Blotting (WB)

Product Details

Immunogen:	The immunogen is a synthetic peptide directed towards the middle region of human HACE1
Sequence:	DVSDWIKNTE YTSGYEREDP VIQWFWEVVE DITQEERVLL LQFVTGSSRV
Predicted Reactivity:	Cow: 100%, Dog: 100%, Guinea Pig: 100%, Horse: 100%, Human: 100%, Mouse: 100%, Rabbit: 100%, Rat: 100%
Characteristics:	This is a rabbit polyclonal antibody against HACE1. It was validated on Western Blot using a cell lysate as a positive control.
Purification:	Affinity Purified

Target Details

Target:	HACE1
---------	-------

Target Details

Alternative Name:	HACE1 (HACE1 Products)
Background:	<p>HACE1 contains 6 ANK repeats and 1 HECT (E6AP-type E3 ubiquitin-protein ligase) domain. HACE1 is an E3 ubiquitin-protein ligase that may function in cellular proteins degradation.</p> <p>Alias Symbols: -</p> <p>Protein Interaction Partner: UBE2L3, UBC, OPTN, Unc45b, Flna, Actn1, Cald1, Lima1, Actn4, Tpm3, Tmod3, Coro1c, Vim, Vcl, Tubb5, Tubb4a, Tpm2, Tpm1, Tcp1, Plec, Sqstm1, Npm1, Myh9, Marcks, Hspa9, Hsp90ab1, Hspd1, Hspa8, Fhl1, Csrp1, Cnn2, Cct8, Serpinh1, Capzb, Capza2, Capza1, Actg1,</p> <p>Protein Size: 909</p>
Molecular Weight:	102 kDa
Gene ID:	57531
NCBI Accession:	NM_020771 , NP_065822
UniProt:	Q8IYU2

Application Details

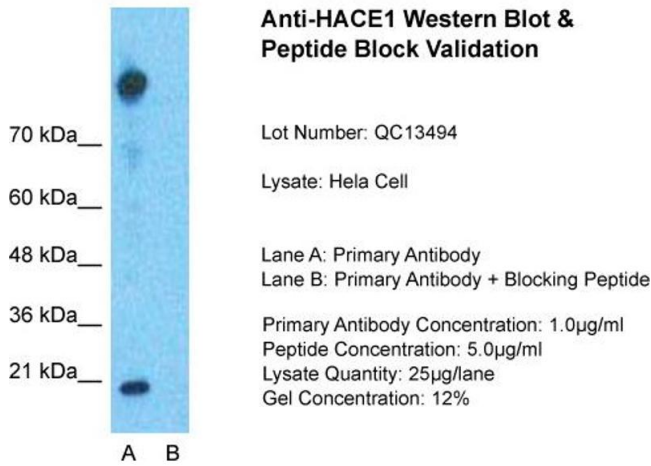
Application Notes:	Optimal working dilutions should be determined experimentally by the investigator.
Comment:	Antigen size: 909 AA
Restrictions:	For Research Use only

Handling

Format:	Liquid
Concentration:	Lot specific
Buffer:	Liquid. Purified antibody supplied in 1x PBS buffer with 0.09 % (w/v) sodium azide and 2 % sucrose.
Preservative:	Sodium azide
Precaution of Use:	This product contains Sodium azide: a POISONOUS AND HAZARDOUS SUBSTANCE which should be handled by trained staff only.
Handling Advice:	Avoid repeated freeze-thaw cycles.
Storage:	-20 °C
Storage Comment:	For short term use, store at 2-8°C up to 1 week. For long term storage, store at -20°C in small

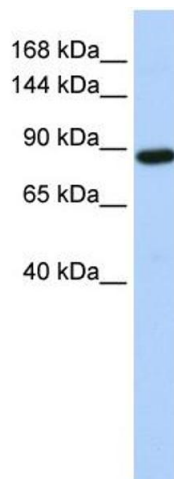
aliquots to prevent freeze-thaw cycles.

Images



Western Blotting

Image 1. Host: Rabbit
Target Name: HACE1
Sample Tissue: Hela Whole cell
Lane A: Primary Antibody Lane B: Primary Antibody + Blocking Peptide
Primary Antibody Concentration: 1 µg/mL Peptide Concentration: 5 µg/mL Lysate Quantity: 41 µg/lane/LaneGel Concentration:.12



Western Blotting

Image 2. WB Suggested Anti-HACE1 Antibody Titration: 0.2-1 ug/ml ELISA Titer: 1:1562500 Positive Control: Hela cell lysate