

Datasheet for ABIN2774774  
**anti-RNF25 antibody (Middle Region)**

## 3 Images

[Go to Product page](#)

## Overview

Quantity:	100 µL
Target:	RNF25
Binding Specificity:	Middle Region
Reactivity:	Human, Mouse, Rat, Dog, Guinea Pig, Horse, Rabbit, Cow
Host:	Rabbit
Clonality:	Polyclonal
Conjugate:	This RNF25 antibody is un-conjugated
Application:	Western Blotting (WB), Immunohistochemistry (IHC)

## Product Details

Immunogen:	The immunogen is a synthetic peptide directed towards the middle region of human RNF25
Sequence:	CREPLVYDLA SLKAAPEPQQ PMELYQPSAE SLRQQEERKR LYQRQQERGG
Predicted Reactivity:	Cow: 93%, Dog: 100%, Guinea Pig: 100%, Horse: 86%, Human: 100%, Mouse: 100%, Rabbit: 92%, Rat: 100%
Characteristics:	This is a rabbit polyclonal antibody against RNF25. It was validated on Western Blot and immunohistochemistry.
Purification:	Affinity Purified

## Target Details

Target:	RNF25
---------	-------

## Target Details

Alternative Name:	RNF25 ( <a href="#">RNF25 Products</a> )
Background:	<p>RNF25 contains a RING finger motif. The mouse counterpart of this protein has been shown to interact with Rela, the p65 subunit of NF-kappaB (NFKB), and modulate NFKB-mediated transcription activity. The mouse protein also binds ubiquitin-conjugating enzymes (E2s) and is a substrate for E2-dependent ubiquitination. The protein encoded by this gene contains a RING finger motif. The mouse counterpart of this protein has been shown to interact with Rela, the p65 subunit of NF-kappaB (NFKB), and modulate NFKB-mediated transcription activity. The mouse protein also binds ubiquitin-conjugating enzymes (E2s) and is a substrate for E2-dependent ubiquitination.</p> <p>Alias Symbols: A07, FLJ13906</p> <p>Protein Interaction Partner: UBE2E3, UBE2D2, UBC, TRIM27, UBE2D1, UBE2U, UBE2D4, UBE2L6, UBE2E2, UBE2E1, UBE2D3, RELA, NKD2,</p> <p>Protein Size: 459</p>
Molecular Weight:	51 kDa
Gene ID:	64320
NCBI Accession:	<a href="#">NM_022453</a> , <a href="#">NP_071898</a>
UniProt:	<a href="#">Q96BH1</a>

## Application Details

Application Notes:	Optimal working dilutions should be determined experimentally by the investigator.
Comment:	Antigen size: 459 AA
Restrictions:	For Research Use only

## Handling

Format:	Liquid
Concentration:	Lot specific
Buffer:	Liquid. Purified antibody supplied in 1x PBS buffer with 0.09 % (w/v) sodium azide and 2 % sucrose.
Preservative:	Sodium azide
Precaution of Use:	This product contains Sodium azide: a POISONOUS AND HAZARDOUS SUBSTANCE which should be handled by trained staff only.

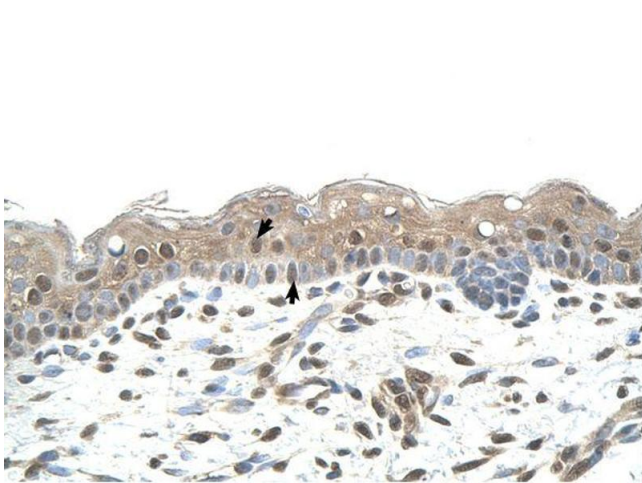
## Handling

Handling Advice: Avoid repeated freeze-thaw cycles.

Storage: -20 °C

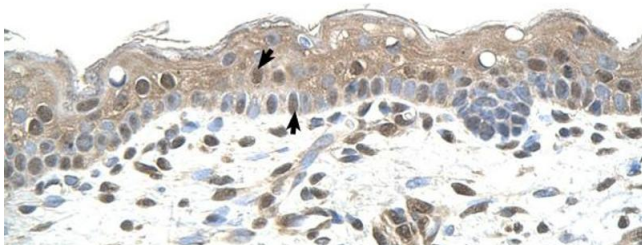
Storage Comment: For short term use, store at 2-8°C up to 1 week. For long term storage, store at -20°C in small aliquots to prevent freeze-thaw cycles.

## Images



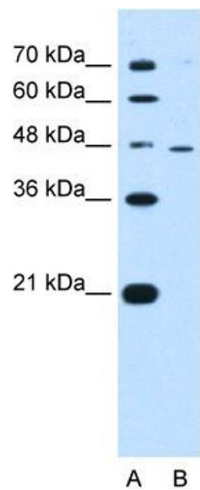
### Immunohistochemistry

**Image 1.**



### Immunohistochemistry

**Image 2.** Human Skin



Western Blotting

**Image 3.** WB Suggested Anti-RNF25 Antibody Titration: 0.5 ug/ml Positive Control: HepG2 cell lysate RNF25 is supported by BioGPS gene expression data to be expressed in HepG2