

Datasheet for ABIN2774782  
**anti-MUL1 antibody (Middle Region)**[Go to Product page](#)

2 Images

1 Publication

## Overview

Quantity:	100 µL
Target:	MUL1
Binding Specificity:	Middle Region
Reactivity:	Human, Mouse, Rat, Rabbit, Dog, Guinea Pig, Horse, Cow
Host:	Rabbit
Clonality:	Polyclonal
Conjugate:	This MUL1 antibody is un-conjugated
Application:	Western Blotting (WB)

## Product Details

Immunogen:	The immunogen is a synthetic peptide directed towards the middle region of human C1orf166
Sequence:	GMQYYLSSQD FDSLLQRQES SVRLWKVLAL VFGFATCATL FFILRKQYLQ
Predicted Reactivity:	Cow: 100%, Dog: 100%, Guinea Pig: 100%, Horse: 100%, Human: 100%, Mouse: 93%, Rabbit: 100%, Rat: 100%
Characteristics:	This is a rabbit polyclonal antibody against C1orf166. It was validated on Western Blot using a cell lysate as a positive control.
Purification:	Affinity Purified

## Target Details

Target:	MUL1
---------	------

## Target Details

Alternative Name:	C1orf166 ( <a href="#">MUL1 Products</a> )
Background:	<p>The function of C1orf166 remains unknown.</p> <p>Alias Symbols: FLJ12875, RP11-401M16.2, GIDE, MAPL, MULAN, RNF218, C1orf166</p> <p>Protein Interaction Partner: UBE2L3, UBE2G2, UBE2E2, TRIM9, GABARAP, UBE2E3, MUL1, UBE2D2, UBC, TRAF2, APPBP2, TAP1, MAVS, UBE2D3, UBE2D1, TP53, AKT1, DNM1L, VPS26A, SUMO1, UBE2I, VPS35, UBE2U, UBE2W, UBE2D4, UBE2L6, UBE2E1,</p> <p>Protein Size: 352</p>
Molecular Weight:	40 kDa
Gene ID:	79594
NCBI Accession:	<a href="#">NM_024544</a> , <a href="#">NP_078820</a>
UniProt:	<a href="#">Q969V5</a>
Pathways:	<a href="#">Positive Regulation of Endopeptidase Activity</a>

## Application Details

Application Notes:	Optimal working dilutions should be determined experimentally by the investigator.
Comment:	Antigen size: 352 AA
Restrictions:	For Research Use only

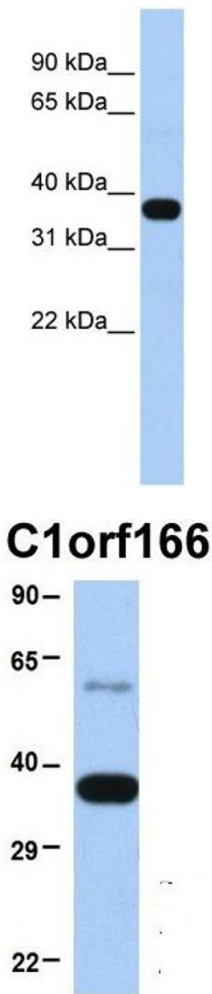
## Handling

Format:	Liquid
Concentration:	Lot specific
Buffer:	Liquid. Purified antibody supplied in 1x PBS buffer with 0.09 % (w/v) sodium azide and 2 % sucrose.
Preservative:	Sodium azide
Precaution of Use:	This product contains Sodium azide: a POISONOUS AND HAZARDOUS SUBSTANCE which should be handled by trained staff only.
Handling Advice:	Avoid repeated freeze-thaw cycles.
Storage:	-20 °C
Storage Comment:	For short term use, store at 2-8°C up to 1 week. For long term storage, store at -20°C in small aliquots to prevent freeze-thaw cycles.

Publications

Product cited in: Hooper, Paudyal, Dash, Boateng: "Modulation of stretch-induced myocyte remodeling and gene expression by nitric oxide: a novel role for lipoma preferred partner in myofibrillogenesis." in: **American journal of physiology. Heart and circulatory physiology**, Vol. 304, Issue 10, pp. H1302-13, (2013) ([PubMed](#)).

Images



**Western Blotting**

**Image 1.** WB Suggested Anti-C1orf166 Antibody Titration: 0.2-1 ug/ml ELISA Titer: 1:312500 Positive Control: Human heart

**Western Blotting**

**Image 2.** Host: Rabbit Target Name: C1orf166 Sample Type: Human Fetal Heart Antibody Dilution: 1.0ug/ml