

Datasheet for ABIN2774796
anti-ITCH antibody (N-Term)



[Go to Product page](#)

1 Image

Overview

Quantity:	100 µL
Target:	ITCH
Binding Specificity:	N-Term
Reactivity:	Human, Rat, Cow, Dog, Rabbit, Horse, Guinea Pig
Host:	Rabbit
Clonality:	Polyclonal
Conjugate:	This ITCH antibody is un-conjugated
Application:	Western Blotting (WB)

Product Details

Immunogen:	The immunogen is a synthetic peptide directed towards the N terminal region of human ITCH
Sequence:	QLESEVTNG ETTCSSESASQ NDDGSRSKDE TRVSTNGSDD PEDAGAGENR
Predicted Reactivity:	Cow: 86%, Dog: 92%, Guinea Pig: 93%, Horse: 86%, Human: 100%, Rabbit: 93%, Rat: 86%
Characteristics:	This is a rabbit polyclonal antibody against ITCH. It was validated on Western Blot using a cell lysate as a positive control.
Purification:	Affinity Purified

Target Details

Target:	ITCH
Alternative Name:	ITCH (ITCH Products)

Target Details

Background:	<p>Atrophin-1 contains a polyglutamine repeat, expansion of which is responsible for dentatorubral and pallidolusian atrophy. The protein encoded by this gene interacts with atrophin-1. This encoded protein is a closely related member of the NEDD4-like prot</p> <p>Alias Symbols: AIF4, AIP4, NAPP1, dJ468O1.1</p> <p>Protein Interaction Partner: GSN, UBE2L3, UBC, ITCH, WWOX, GGA3, UBE2D2, PTCH1, ATXN3, HTT, EGFR, SMAD6, DTX3L, CXCR4, LATS1, POLR2A, HNRNPL, EWSR1, RPAP2, CPSF7, RPAP3, UBAP2, PABPC1, DAZAP1, WBP2, SMARCE1, SMARCC2, SMARCC1, POLR2E, POLR2C, SPG20, HNRNPUL1, UBAP2L, URI1, ARID1A, SF1</p> <p>Protein Size: 862</p>
Molecular Weight:	99 kDa
Gene ID:	83737
NCBI Accession:	NM_031483 , NP_113671
UniProt:	A9Z1X3
Pathways:	Activation of Innate immune Response , CXCR4-mediated Signaling Events

Application Details

Application Notes:	Optimal working dilutions should be determined experimentally by the investigator.
Comment:	Antigen size: 862 AA
Restrictions:	For Research Use only

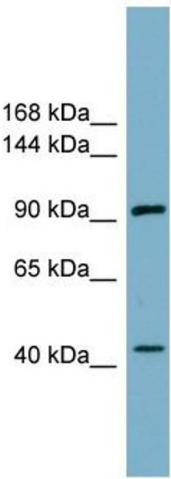
Handling

Format:	Liquid
Concentration:	Lot specific
Buffer:	Liquid. Purified antibody supplied in 1x PBS buffer with 0.09 % (w/v) sodium azide and 2 % sucrose.
Preservative:	Sodium azide
Precaution of Use:	This product contains Sodium azide: a POISONOUS AND HAZARDOUS SUBSTANCE which should be handled by trained staff only.
Handling Advice:	Avoid repeated freeze-thaw cycles.
Storage:	-20 °C

Handling

Storage Comment: For short term use, store at 2-8°C up to 1 week. For long term storage, store at -20°C in small aliquots to prevent freeze-thaw cycles.

Images



Western Blotting

Image 1. WB Suggested Anti-ITCH Antibody Titration: 0.2-1 ug/ml ELISA Titer: 1:312500 Positive Control: COLO205 cell lysate