

Datasheet for ABIN2774822
anti-DNA2 antibody (Middle Region)[Go to Product page](#)

1 Image

Overview

Quantity:	100 µL
Target:	DNA2
Binding Specificity:	Middle Region
Reactivity:	Human, Mouse, Rat, Pig, Rabbit, Cow, Dog, Guinea Pig, Horse
Host:	Rabbit
Clonality:	Polyclonal
Conjugate:	This DNA2 antibody is un-conjugated
Application:	Western Blotting (WB)

Product Details

Immunogen:	The immunogen is a synthetic peptide directed towards the middle region of human DNA2L
Sequence:	KLELEFYADY SDNPWLMGVF EPNNPVCFLN TDKVPAPEQV EKGGSNVTE
Predicted Reactivity:	Cow: 92%, Dog: 93%, Guinea Pig: 85%, Horse: 86%, Human: 100%, Mouse: 93%, Pig: 93%, Rabbit: 85%, Rat: 86%
Characteristics:	This is a rabbit polyclonal antibody against DNA2L. It was validated on Western Blot using a cell lysate as a positive control.
Purification:	Affinity Purified

Target Details

Target:	DNA2
---------	------

Target Details

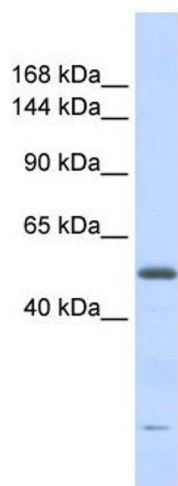
Alternative Name:	DNA2L (DNA2 Products)
Background:	<p>DNA2L belongs to the DNA2/NAM7 helicase family. It may function in chromosomal DNA replication.</p> <p>Alias Symbols: DNA2L, FLJ10063, KIAA0083, MGC133297</p> <p>Protein Interaction Partner: FAM96B, CIAO1, UPF1, RPA3, RPA2, RPA1, LYN, MMS19, UBC,</p> <p>Protein Size: 494</p>
Molecular Weight:	54 kDa
Gene ID:	1763
NCBI Accession:	NM_001080449
UniProt:	P51530
Pathways:	Telomere Maintenance , DNA Damage Repair , DNA Replication , Synthesis of DNA

Application Details

Application Notes:	Optimal working dilutions should be determined experimentally by the investigator.
Comment:	Antigen size: 494 AA
Restrictions:	For Research Use only

Handling

Format:	Liquid
Concentration:	Lot specific
Buffer:	Liquid. Purified antibody supplied in 1x PBS buffer with 0.09 % (w/v) sodium azide and 2 % sucrose.
Preservative:	Sodium azide
Precaution of Use:	This product contains Sodium azide: a POISONOUS AND HAZARDOUS SUBSTANCE which should be handled by trained staff only.
Handling Advice:	Avoid repeated freeze-thaw cycles.
Storage:	-20 °C
Storage Comment:	For short term use, store at 2-8°C up to 1 week. For long term storage, store at -20°C in small aliquots to prevent freeze-thaw cycles.



Western Blotting

Image 1. WB Suggested Anti-DNA2L Antibody Titration: 0.2-1 ug/ml ELISA Titer: 1:312500 Positive Control: Human heart