

Datasheet for ABIN2774823  
**anti-ADRB1 antibody (Middle Region)**

6 Images

2 Publications

[Go to Product page](#)

## Overview

Quantity:	100 µL
Target:	ADRB1
Binding Specificity:	Middle Region
Reactivity:	Human, Mouse, Rat, Dog, Pig, Rabbit, Guinea Pig
Host:	Rabbit
Clonality:	Polyclonal
Conjugate:	This ADRB1 antibody is un-conjugated
Application:	Western Blotting (WB)

## Product Details

Immunogen:	The immunogen is a synthetic peptide directed towards the middle region of human ADRB1
Sequence:	CTVWAISALV SFLPILMHWW RAESDEARRC YNDPKCCDFV TNRAYAIASS
Predicted Reactivity:	Dog: 87%, Guinea Pig: 93%, Human: 100%, Mouse: 100%, Pig: 100%, Rabbit: 93%, Rat: 100%
Characteristics:	This is a rabbit polyclonal antibody against ADRB1. It was validated on Western Blot using a cell lysate as a positive control.
Purification:	Affinity Purified

## Target Details

Target:	ADRB1
Alternative Name:	ADRB1 ( <a href="#">ADRB1 Products</a> )

## Target Details

Background:	<p>The adrenergic receptors (subtypes alpha 1, alpha 2, beta 1, and beta 2) are a prototypic family of guanine nucleotide binding regulatory protein-coupled receptors that mediate the physiological effects of the hormone epinephrine and the neurotransmitter norepinephrine. Specific polymorphisms in ADRB1 gene have been shown to affect the resting heart rate and can be involved in heart failure. The adrenergic receptors (subtypes alpha 1, alpha 2, beta 1, and beta 2) are a prototypic family of guanine nucleotide binding regulatory protein-coupled receptors that mediate the physiological effects of the hormone epinephrine and the neurotransmitter norepinephrine. Specific polymorphisms in this gene have been shown to affect the resting heart rate and can be involved in heart failure. Publication Note: This RefSeq record includes a subset of the publications that are available for this gene. Please see the Entrez Gene record to access additional publications.</p> <p>Alias Symbols: ADRB1R, B1AR, BETA1AR, RHR</p> <p>Protein Interaction Partner: GPRASP1, GPRASP2, SNTA1, ARRB2, ARRB1, MAGI2, DLG4, GRB2, ADRA2A, MAGI3, DLGAP2, GOPC, GIPC1, SH3GL2, SH3GL3, DLG1, NOS1,</p> <p>Protein Size: 477</p>
Molecular Weight:	51 kDa
Gene ID:	153
NCBI Accession:	<a href="#">NM_000684</a> , <a href="#">NP_000675</a>
UniProt:	<a href="#">P08588</a>
Pathways:	<a href="#">cAMP Metabolic Process</a> , <a href="#">Cellular Glucan Metabolic Process</a> , <a href="#">Regulation of Muscle Cell Differentiation</a> , <a href="#">Synaptic Membrane</a> , <a href="#">Regulation of G-Protein Coupled Receptor Protein Signaling</a> , <a href="#">G-protein mediated Events</a> , <a href="#">Interaction of EGFR with phospholipase C-gamma</a> , <a href="#">Brown Fat Cell Differentiation</a>

## Application Details

Application Notes:	Optimal working dilutions should be determined experimentally by the investigator.
Comment:	Antigen size: 477 AA
Restrictions:	For Research Use only

## Handling

Format:	Liquid
Concentration:	Lot specific

## Handling

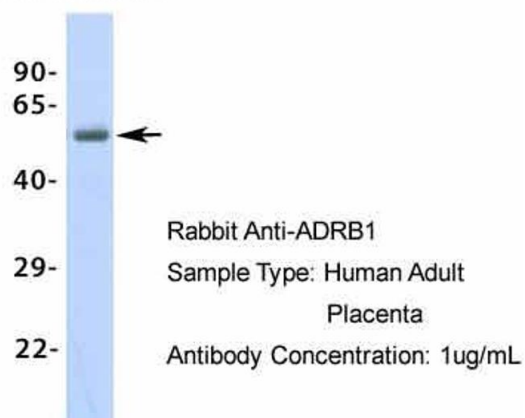
Buffer:	Liquid. Purified antibody supplied in 1x PBS buffer with 0.09 % (w/v) sodium azide and 2 % sucrose.
Preservative:	Sodium azide
Precaution of Use:	This product contains Sodium azide: a POISONOUS AND HAZARDOUS SUBSTANCE which should be handled by trained staff only.
Handling Advice:	Avoid repeated freeze-thaw cycles.
Storage:	-20 °C
Storage Comment:	For short term use, store at 2-8°C up to 1 week. For long term storage, store at -20°C in small aliquots to prevent freeze-thaw cycles.

## Publications

Product cited in:	Harden, Perez-Carrion, Babakordi, Plummer, Hepburn, Barker, Wright, Evans, Corfe: "Evaluation of the salivary proteome as a surrogate tissue for systems biology approaches to understanding appetite." in: <b>Journal of proteomics</b> , Vol. 75, Issue 10, pp. 2916-23, (2012) ( <a href="#">PubMed</a> ).
-------------------	---

## Images

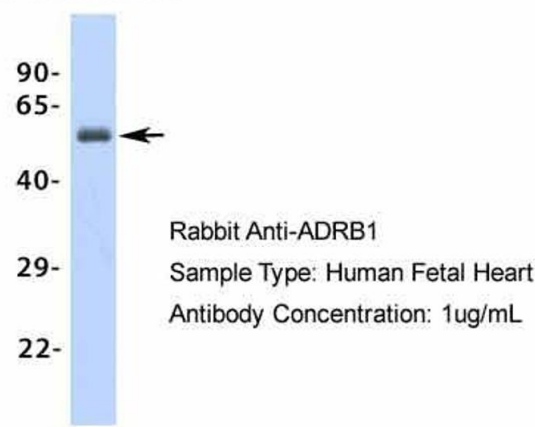
### ADRB1



### Western Blotting

**Image 1.** Host: Rabbit Target Name: ADRB1 Sample Type: Human Adult Placenta Antibody Dilution: 1.0ug/ml

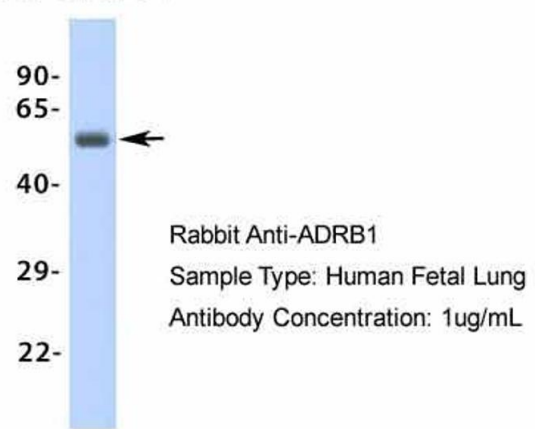
# ADRB1



## Western Blotting

**Image 2.** Host: Rabbit Target Name: ADRB1 Sample Type: Human Fetal Heart Antibody Dilution: 1.0 µg/ml

# ADRB1



## Western Blotting

**Image 3.** Host: Rabbit Target Name: ADRB1 Sample Type: Human Fetal Lung Antibody Dilution: 1.0 µg/ml

Please check the [product details page](#) for more images. Overall 6 images are available for ABIN2774823.