

Datasheet for ABIN2774825  
**anti-ATF3 antibody (Middle Region)**

## 3 Images

[Go to Product page](#)

## Overview

Quantity:	100 µL
Target:	ATF3
Binding Specificity:	Middle Region
Reactivity:	Human, Mouse, Rat, Cow, Dog, Guinea Pig, Horse, Rabbit, Zebrafish (Danio rerio), Saccharomyces cerevisiae
Host:	Rabbit
Clonality:	Polyclonal
Conjugate:	This ATF3 antibody is un-conjugated
Application:	Western Blotting (WB)

## Product Details

Immunogen:	The immunogen is a synthetic peptide directed towards the middle region of human ATF3
Sequence:	PLGVSTITKAE VAPEEDERKK RRRERNKIAA AKCRNKKKEK TECLQKESEK
Predicted Reactivity:	Cow: 100%, Dog: 100%, Guinea Pig: 100%, Horse: 100%, Human: 100%, Mouse: 86%, Rabbit: 93%, Rat: 93%, Yeast: 75%, Zebrafish: 80%
Characteristics:	This is a rabbit polyclonal antibody against ATF3. It was validated on Western Blot using a cell lysate as a positive control.
Purification:	Affinity Purified

## Target Details

Target:	ATF3
---------	------

## Target Details

Alternative Name:	ATF3 ( <a href="#">ATF3 Products</a> )
Background:	<p>This protein binds the cAMP response element (CRE) (consensus: 5'-GTGACGT[AC][AG]-3'), a sequence present in many viral and cellular promoters. ATF3 represses transcription from promoters with ATF sites. It may repress transcription by stabilizing the binding of inhibitory cofactors at the promoter. Isoform 2 activates transcription presumably by sequestering inhibitory cofactors away from the promoters. Activating transcription factor 3 is a member of the mammalian activation transcription factor/cAMP responsive element-binding (CREB) protein family of transcription factors. Multiple transcript variants encoding two different isoforms have been found for this gene. The longer isoform represses rather than activates transcription from promoters with ATF binding elements. The shorter isoform (deltaZip2) lacks the leucine zipper protein-dimerization motif and does not bind to DNA, and it stimulates transcription presumably by sequestering inhibitory co-factors away from the promoter. It is possible that alternative splicing of the ATF3 gene may be physiologically important in the regulation of target genes.</p> <p>Alias Symbols: -</p> <p>Protein Interaction Partner: SUV39H1, BATF3, MAFF, CREB3, FOSL1, MAFG, JUNB, JUN, FOS, DDIT3, DBP, ATF2, CEBPG, CEBPE, CEBPA, ATF4, ATF3, BATF, HSP90AA1, SRA1, ZNF212, ID3, FHL2, SUMO1, SUMO3, HDAC10, HDAC5, HDAC6, HDAC4, HDAC3, HDAC1, SMARCA4, PDX1, ACTB, UBC, SUMO2, STAT1, MDM2, SM</p> <p>Protein Size: 181</p>
Molecular Weight:	20 kDa
Gene ID:	467
NCBI Accession:	<a href="#">NM_001674</a> , <a href="#">NP_001665</a>
UniProt:	<a href="#">P18847</a>
Pathways:	<a href="#">Myometrial Relaxation and Contraction</a> , <a href="#">ER-Nucleus Signaling</a> , <a href="#">Unfolded Protein Response</a>

## Application Details

Application Notes:	Optimal working dilutions should be determined experimentally by the investigator.
Comment:	Antigen size: 181 AA
Restrictions:	For Research Use only

## Handling

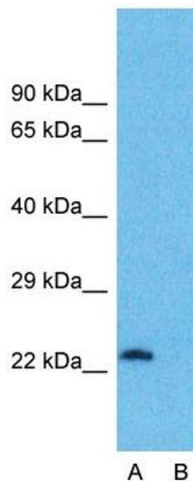
Format:	Liquid
Concentration:	Lot specific
Buffer:	Liquid. Purified antibody supplied in 1x PBS buffer with 0.09 % (w/v) sodium azide and 2 % sucrose.
Preservative:	Sodium azide
Precaution of Use:	This product contains Sodium azide: a POISONOUS AND HAZARDOUS SUBSTANCE which should be handled by trained staff only.
Handling Advice:	Avoid repeated freeze-thaw cycles.
Storage:	-20 °C
Storage Comment:	For short term use, store at 2-8°C up to 1 week. For long term storage, store at -20°C in small aliquots to prevent freeze-thaw cycles.

## Images



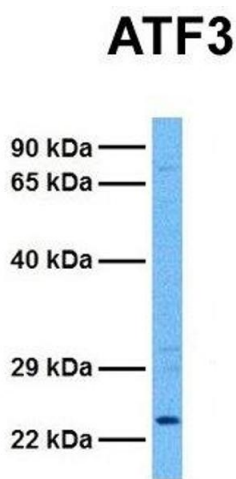
### Western Blotting

**Image 1.** WB Suggested Anti-ATF3 Antibody Titration: 0.2-1 ug/ml ELISA Titer: 1:312500 Positive Control: OVCAR-3 cell lysate



### Western Blotting

**Image 2.** Host: Rabbit Target Name: ATF3 Sample Type: OVCAR-3 Lane A: Primary Antibody Lane B: Primary Antibody + Blocking Peptide Primary Antibody Concentration: 1ug/ml Peptide Concentration: 5ug/ml Lysate Quantity: 25ug/lane/lane Gel Concentration: 0.12



Western Blotting

**Image 3.** Host: Rabbit Target Name: ATF3 Sample Tissue:  
Human 293T Antibody Dilution: 1.0ug/ml