

Datasheet for ABIN2774833

anti-Annexin a1 antibody (N-Term)

5 Images

2 Publications

[Go to Product page](#)

Overview

Quantity:	100 µL
Target:	Annexin a1 (ANXA1)
Binding Specificity:	N-Term
Reactivity:	Human, Mouse, Rat, Dog, Guinea Pig, Cow
Host:	Rabbit
Clonality:	Polyclonal
Conjugate:	This Annexin a1 antibody is un-conjugated
Application:	Western Blotting (WB), Immunohistochemistry (IHC)

Product Details

Immunogen:	The immunogen is a synthetic peptide directed towards the N terminal region of human ANXA1
Sequence:	WFIENEEQEY VQTVKSSKGG PGSAVSPYPT FNPSSDVAAL HKAIMVKGVD
Predicted Reactivity:	Cow: 79%, Dog: 79%, Guinea Pig: 79%, Human: 100%, Mouse: 83%, Rat: 82%
Characteristics:	This is a rabbit polyclonal antibody against ANXA1. It was validated on Western Blot and immunohistochemistry.
Purification:	Protein A purified

Target Details

Target:	Annexin a1 (ANXA1)
Alternative Name:	ANXA1 (ANXA1 Products)

Target Details

Background:	<p>ANXA1 encodes a protein that belongs to a family of Ca(2+)-dependent phospholipid binding proteins which have a molecular weight of approximately 35,000 to 40,000 and are preferentially located on the cytosolic face of the plasma membrane. Annexin I protein has an apparent relative molecular mass of 40 kDa, with phospholipase A2 inhibitory activity. Since phospholipase A2 is required for the biosynthesis of the potent mediators of inflammation, prostaglandins and leukotrienes, annexin I may have potential anti-inflammatory activity.</p> <p>Alias Symbols: ANX1, LPC1</p> <p>Protein Interaction Partner: UBC, MEIS2, SUMO2, SUMO3, WWOX, ZBTB1, HECW2, YWHAQ, ATP4A, UBD, BAG3, HMGA1, VCAM1, ITGA4, FN1, ATF2, ANXA4, RIPK1, IKBKG, RELA, CUL5, CDK2, SIRT7, ANXA5, ANXA1, KLHL23, LRIF1, OTUB1, C1orf123, CSAD, C14orf1, FAF1, COPS6, CCT7, KMT2B, UNC119, SUMO1, UBE2</p> <p>Protein Size: 346</p>
Molecular Weight:	38 kDa
Gene ID:	301
NCBI Accession:	NM_000700 , NP_000691
UniProt:	P04083
Pathways:	Hormone Transport

Application Details

Application Notes:	Optimal working dilutions should be determined experimentally by the investigator.
Comment:	Antigen size: 346 AA
Restrictions:	For Research Use only

Handling

Format:	Liquid
Concentration:	Lot specific
Buffer:	Liquid. Purified antibody supplied in 1x PBS buffer with 0.09 % (w/v) sodium azide and 2 % sucrose.
Preservative:	Sodium azide
Precaution of Use:	This product contains Sodium azide: a POISONOUS AND HAZARDOUS SUBSTANCE which should be handled by trained staff only.

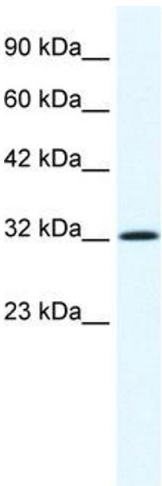
Handling

Handling Advice:	Avoid repeated freeze-thaw cycles.
Storage:	-20 °C
Storage Comment:	For short term use, store at 2-8°C up to 1 week. For long term storage, store at -20°C in small aliquots to prevent freeze-thaw cycles.

Publications

Product cited in:	Gerhard, Wagner, Feingold, Shenmen, Grouse, Schuler, Klein, Old, Rasooly, Good, Guyer, Peck, Derge, Lipman, Collins, Jang, Sherry, Feolo, Misquitta, Lee, Rotmistrovsky, Greenhut, Schaefer, Buetow et al.: "The status, quality, and expansion of the NIH full-length cDNA project: the Mammalian Gene Collection (MGC). ..." in: Genome research , Vol. 14, Issue 10B, pp. 2121-7, (2004) (PubMed).
-------------------	--

Images



Western Blotting

Image 1. WB Suggested Anti-ANXA1 Antibody Titration: 1.25ug/ml ELISA Titer: 1:62500 Positive Control: HepG2 cell lysate



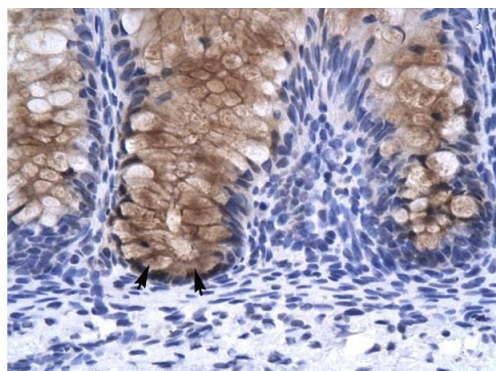
Anti-ANXA1 Western Blot & Peptide Block Validation

Lot Number: QC5513
Lysate: HepG2 Cell

Lane A: Primary Antibody
Lane B: Primary Antibody + Blocking Peptide
Primary Antibody Concentration: 2.5µg/ml
Peptide Concentration: 2.0µg/ml
Lysate Quantity: 25µg/lane
Gel Concentration: 12%

Western Blotting

Image 2. Host: Rabbit Target Name: ANXA1 Sample Type: HepG2 Lane A: Primary Antibody Lane B: Primary Antibody + Blocking Peptide Primary Antibody Concentration: 2.5ug/mL Peptide Concentration: 2.0ug/mL Lysate Quantity: 25ug/lane Gel Concentration: 12%



Rabbit Anti-ANXA1 Antibody
Catalog Number: ARP36568
Lot Number: QC5513
Paraffin Embedded Tissue: Human Intestine
Cells with Positive label: Epithelial cells of intestinal gland(Indicated with Arrows)
Antibody Concentration: 4.0-8.0 µg/ml
Magnification: 400X

Immunohistochemistry

Image 3. Human Intestine

Please check the [product details page](#) for more images. Overall 5 images are available for ABIN2774833.