

Datasheet for ABIN2774837

anti-ANXA8L2 antibody (Middle Region)**2** Images[Go to Product page](#)

Overview

Quantity:	100 µL
Target:	ANXA8L2
Binding Specificity:	Middle Region
Reactivity:	Human, Rat, Mouse, Cow, Rabbit, Dog, Horse, Guinea Pig, Pig, Zebrafish (Danio rerio)
Host:	Rabbit
Clonality:	Polyclonal
Conjugate:	This ANXA8L2 antibody is un-conjugated
Application:	Western Blotting (WB)

Product Details

Immunogen:	The immunogen is a synthetic peptide directed towards the middle region of human ANXA8L2
Sequence:	VFEEYEKIAN KSIEDSIKSE THGSLEEAML TVVKCTQNLH SYFAERLYYA
Predicted Reactivity:	Cow: 100%, Dog: 86%, Guinea Pig: 86%, Horse: 100%, Human: 100%, Mouse: 93%, Pig: 100%, Rabbit: 100%, Rat: 100%, Zebrafish: 86%
Characteristics:	This is a rabbit polyclonal antibody against ANXA8L2. It was validated on Western Blot using a cell lysate as a positive control.
Purification:	Affinity Purified

Target Details

Target:	ANXA8L2
---------	---------

Target Details

Alternative Name:	ANXA8L2 (ANXA8L2 Products)
Background:	<p>ANXA8L2 is a member of the annexin family of evolutionarily conserved Ca²⁺ and phospholipid binding proteins. The protein may function as an anticoagulant that indirectly inhibits the thromboplastin-specific complex. Overexpression of this gene has been associated with acute myelocytic leukemia. A highly similar duplicated copy of this gene is found in close proximity on the long arm of chromosome 10. This gene encodes a member of the annexin family of evolutionarily conserved Ca²⁺ and phospholipid binding proteins. The encoded protein may function as an anticoagulant that indirectly inhibits the thromboplastin-specific complex. Overexpression of this gene has been associated with acute myelocytic leukemia. A highly similar duplicated copy of this gene is found in close proximity on the long arm of chromosome 10.</p> <p>Alias Symbols: ANXA8, FLJ32754, bA145E20.2</p> <p>Protein Size: 327</p>
Molecular Weight:	37 kDa
Gene ID:	244
NCBI Accession:	NM_001630 , NP_001621
UniProt:	P13928

Application Details

Application Notes:	Optimal working dilutions should be determined experimentally by the investigator.
Comment:	Antigen size: 327 AA
Restrictions:	For Research Use only

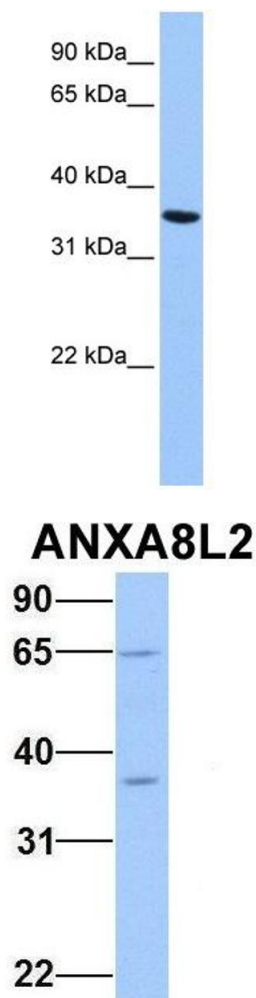
Handling

Format:	Liquid
Concentration:	Lot specific
Buffer:	Liquid. Purified antibody supplied in 1x PBS buffer with 0.09 % (w/v) sodium azide and 2 % sucrose.
Preservative:	Sodium azide
Precaution of Use:	This product contains Sodium azide: a POISONOUS AND HAZARDOUS SUBSTANCE which should be handled by trained staff only.

Handling

Handling Advice:	Avoid repeated freeze-thaw cycles.
Storage:	-20 °C
Storage Comment:	For short term use, store at 2-8°C up to 1 week. For long term storage, store at -20°C in small aliquots to prevent freeze-thaw cycles.

Images



Western Blotting

Image 1. WB Suggested Anti-ANXA8L2 Antibody Titration: 0.2-1 ug/ml ELISA Titer: 1:1562500 Positive Control: HepG2 cell lysate

Western Blotting

Image 2. Host: Rabbit Target Name: ANXA8L2 Sample Type: Human Fetal Heart Antibody Dilution: 1.0ug/ml