

Datasheet for ABIN2774847

anti-Annexin A2 antibody (C-Term)[Go to Product page](#)**3** Images

Overview

Quantity:	100 µL
Target:	Annexin A2 (ANXA2)
Binding Specificity:	C-Term
Reactivity:	Human, Mouse, Rat, Cow, Dog, Sheep, Horse, Guinea Pig, Rabbit
Host:	Rabbit
Clonality:	Polyclonal
Conjugate:	This Annexin A2 antibody is un-conjugated
Application:	Western Blotting (WB)

Product Details

Immunogen:	The immunogen is a synthetic peptide directed towards the C terminal region of human ANXA2
Sequence:	RIMVSRSEVD MLKIRSEFKR KYGKSLYYYI QQDTKGDYQK ALLYLCGGDD
Predicted Reactivity:	Cow: 100%, Dog: 100%, Guinea Pig: 100%, Horse: 100%, Human: 100%, Mouse: 100%, Rabbit: 93%, Rat: 100%, Sheep: 100%
Characteristics:	This is a rabbit polyclonal antibody against ANXA2. It was validated on Western Blot using a cell lysate as a positive control.
Purification:	Protein A purified

Target Details

Target:	Annexin A2 (ANXA2)
---------	--------------------

Target Details

Alternative Name:	ANXA2 (ANXA2 Products)
Background:	<p>ANXA2 encodes a member of the annexin family. Members of this calcium-dependent phospholipid-binding protein family play a role in the regulation of cellular growth and in signal transduction pathways. This protein functions as an autocrine factor which heightens osteoclast formation and bone resorption. ANXA2 has three pseudogenes located on chromosomes 4, 9 and 10, respectively. Multiple alternatively spliced transcript variants encoding different isoforms have been found for ANXA2.</p> <p>Alias Symbols: P36, ANX2, LIP2, LPC2, CAL1H, LPC2D, ANX2L4, PAP-IV</p> <p>Protein Interaction Partner: ISG15, UBC, S100A10, PLA2G4A, SPRTN, SUMO2, SUMO3, MDM2, NEDD8, RPA3, RPA2, RPA1, ASB9, WWOX, LOC100128588, DNAJC8, PARK2, YWHAQ, ATP4A, BAG3, TERT, TP53, NPM1, HMGA1, MYC, MLH1, ITGA4, FN1, ESR1, GRDX, IQCB1, VCAM1, VCP, HNF1A, RPS13, RPL11, APP, GNB2L1,</p> <p>Protein Size: 339</p>
Molecular Weight:	37 kDa
Gene ID:	302
NCBI Accession:	NM_004039 , NP_004030
UniProt:	Q8TBV2
Pathways:	S100 Proteins

Application Details

Application Notes:	Optimal working dilutions should be determined experimentally by the investigator.
Comment:	Antigen size: 339 AA
Restrictions:	For Research Use only

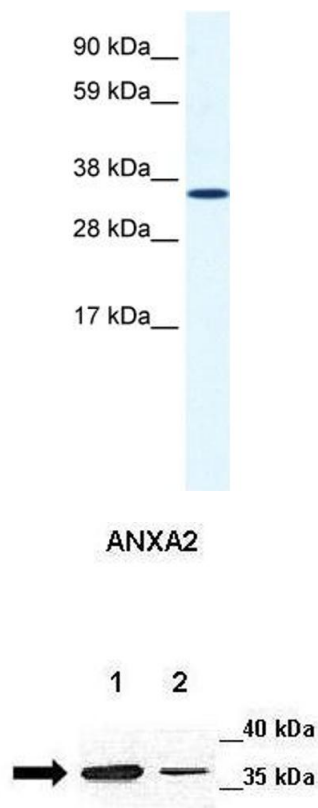
Handling

Format:	Liquid
Concentration:	Lot specific
Buffer:	Liquid. Purified antibody supplied in 1x PBS buffer with 0.09 % (w/v) sodium azide and 2 % sucrose.
Preservative:	Sodium azide
Precaution of Use:	This product contains Sodium azide: a POISONOUS AND HAZARDOUS SUBSTANCE which

Handling

	should be handled by trained staff only.
Handling Advice:	Avoid repeated freeze-thaw cycles.
Storage:	-20 °C
Storage Comment:	For short term use, store at 2-8°C up to 1 week. For long term storage, store at -20°C in small aliquots to prevent freeze-thaw cycles.

Images



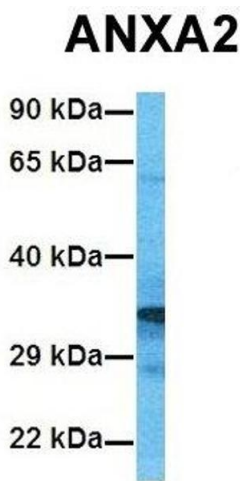
Western Blotting

Image 1. WB Suggested Anti-ANXA2 Antibody Titration: 1.25ug/ml ELISA Titer: 1:312500 Positive Control: Human Lung

Western Blotting

Image 2. Lanes: Lane 1: 20ug mouse GL261 cell lysate Lane 2: 20ug mouse astrocyte cell lysate Primary Antibody Dilution: 1:250 Secondary Antibody: Anti-rabbit-HRP Secondary Antibody Dilution: 1:500 Gene Name: ANXA2 Submitted by: Anonymous

See Immunoblot 2 Data and Customer Feedback for more Information



Western Blotting

Image 3. Host: Rabbit Target Name: ANXA2 Sample Tissue:
Human 293T Antibody Dilution: 1.0ug/ml