

Datasheet for ABIN2774855
anti-GJB1 antibody (C-Term)[Go to Product page](#)

4 Images

1 Publication

Overview

Quantity:	100 µL
Target:	GJB1
Binding Specificity:	C-Term
Reactivity:	Human, Rat, Mouse, Dog, Cow, Horse, Rabbit, Guinea Pig
Host:	Rabbit
Clonality:	Polyclonal
Conjugate:	This GJB1 antibody is un-conjugated
Application:	Western Blotting (WB), Immunohistochemistry (IHC)

Product Details

Immunogen:	The immunogen is a synthetic peptide directed towards the C terminal region of human GJB1
Sequence:	GFGHRLSPEY KQNEINKLLS EQDGLKDIL RRSPGTGAGL AEKSDRCSAC
Predicted Reactivity:	Cow: 100%, Dog: 100%, Guinea Pig: 100%, Horse: 100%, Human: 100%, Mouse: 100%, Rabbit: 100%, Rat: 100%
Characteristics:	This is a rabbit polyclonal antibody against GJB1. It was validated on Western Blot and immunohistochemistry.
Purification:	Protein A purified

Target Details

Target:	GJB1
---------	------

Target Details

Alternative Name:	GJB1 (GJB1 Products)
Background:	<p>This gene encodes for a Connexin 32 protein. A large Charcot-Marie-Tooth disease family has been identified with a novel mutation in the Cx32 P2 promoter region at position -526bp. Cx32 mutants that are associated with a CNS phenotype may have toxic effects in oligodendrocytes.</p> <p>Alias Symbols: CMTX, CX32, CMTX1</p> <p>Protein Interaction Partner: UBC, VKORC1, APP, CNST, OCLN, PRKACA, SRC, PRKCA, GJB2, CALM1, CAV1, JUP,</p> <p>Protein Size: 283</p>
Molecular Weight:	31 kDa
Gene ID:	2705
NCBI Accession:	NM_000166 , NP_000157
UniProt:	P08034
Pathways:	Cell-Cell Junction Organization

Application Details

Application Notes:	Optimal working dilutions should be determined experimentally by the investigator.
Comment:	Antigen size: 283 AA
Restrictions:	For Research Use only

Handling

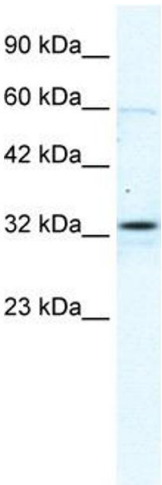
Format:	Liquid
Concentration:	Lot specific
Buffer:	Liquid. Purified antibody supplied in 1x PBS buffer with 0.09 % (w/v) sodium azide and 2 % sucrose.
Preservative:	Sodium azide
Precaution of Use:	This product contains Sodium azide: a POISONOUS AND HAZARDOUS SUBSTANCE which should be handled by trained staff only.
Handling Advice:	Avoid repeated freeze-thaw cycles.
Storage:	-20 °C
Storage Comment:	For short term use, store at 2-8°C up to 1 week. For long term storage, store at -20°C in small

aliquots to prevent freeze-thaw cycles.

Publications

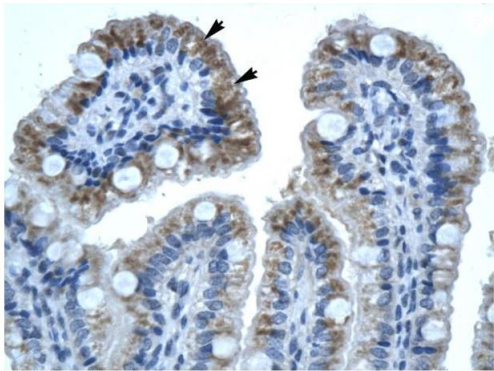
Product cited in: Harden, Perez-Carrion, Babakordi, Plummer, Hepburn, Barker, Wright, Evans, Corfe: "Evaluation of the salivary proteome as a surrogate tissue for systems biology approaches to understanding appetite." in: **Journal of proteomics**, Vol. 75, Issue 10, pp. 2916-23, (2012) ([PubMed](#)).

Images



Western Blotting

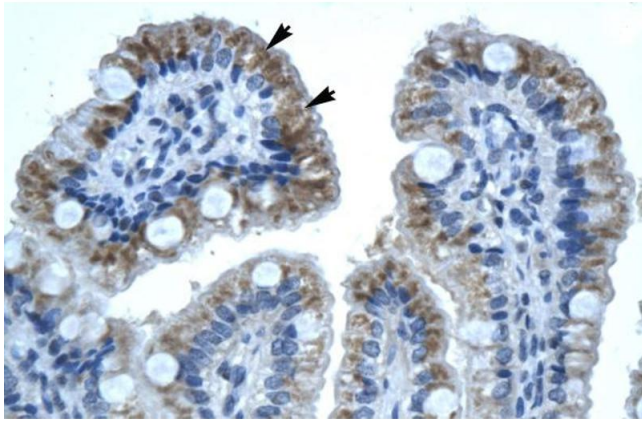
Image 1. WB Suggested Anti-GJB1 Antibody Titration: 2.5ug/ml ELISA Titer: 1:312500 Positive Control: Jurkat cell lysate



Rabbit Anti-GJB1 Antibody
Catalog Number: ARP36600
Lot Number: QC5550
Paraffin Embedded Tissue: Human Intestine
Cells with Positive label: Epithelial cells of intestinal villus(Indicated with Arrows)
Antibody Concentration: 4.0-8.0 µg/ml
Magnification: 400X

Immunohistochemistry

Image 2. Human Intestine



Immunohistochemistry

Image 3. Human Intestine

Please check the [product details page](#) for more images. Overall 4 images are available for ABIN2774855.