

Datasheet for ABIN2774856  
**anti-GJA4 antibody (Middle Region)**

## 6 Images

[Go to Product page](#)

## Overview

Quantity:	100 µL
Target:	GJA4
Binding Specificity:	Middle Region
Reactivity:	Human, Mouse, Rat, Cow, Rabbit, Sheep, Dog, Guinea Pig, Horse
Host:	Rabbit
Clonality:	Polyclonal
Conjugate:	This GJA4 antibody is un-conjugated
Application:	Western Blotting (WB), Immunohistochemistry (IHC)

## Product Details

Immunogen:	The immunogen is a synthetic peptide directed towards the middle region of human GJA4
Sequence:	QKEGELRALP AKDPQVERAL AAVERQMAKI SVAEDGRLRI RGALMGTYVA
Predicted Reactivity:	Cow: 93%, Dog: 93%, Guinea Pig: 86%, Horse: 79%, Human: 100%, Mouse: 79%, Rabbit: 100%, Rat: 86%, Sheep: 93%
Characteristics:	This is a rabbit polyclonal antibody against GJA4. It was validated on Western Blot using a cell lysate as a positive control.
Purification:	Affinity Purified

## Target Details

Target:	GJA4
---------	------

## Target Details

Alternative Name:	GJA4 ( <a href="#">GJA4 Products</a> )
Background:	<p>GJA4 is a member of the connexin family. The protein is a component of gap junctions, which are composed of arrays of intercellular channels that provide a route for the diffusion of low molecular weight materials from cell to cell. Mutations in this gene have been associated with atherosclerosis and a higher risk of myocardial infarction. This gene encodes a member of the connexin gene family. The encoded protein is a component of gap junctions, which are composed of arrays of intercellular channels that provide a route for the diffusion of low molecular weight materials from cell to cell. Mutations in this gene have been associated with atherosclerosis and a higher risk of myocardial infarction. Publication Note: This RefSeq record includes a subset of the publications that are available for this gene. Please see the Entrez Gene record to access additional publications.</p> <p>Alias Symbols: CX37</p> <p>Protein Size: 333</p>
Molecular Weight:	37 kDa
Gene ID:	2701
NCBI Accession:	<a href="#">NM_002060</a> , <a href="#">NP_002051</a>
UniProt:	<a href="#">P35212</a>
Pathways:	<a href="#">Cell-Cell Junction Organization</a>

## Application Details

Application Notes:	Optimal working dilutions should be determined experimentally by the investigator.
Comment:	Antigen size: 333 AA
Restrictions:	For Research Use only

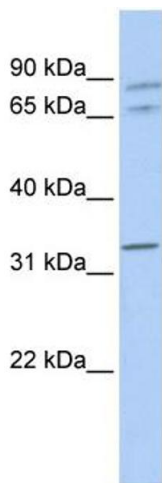
## Handling

Format:	Liquid
Concentration:	Lot specific
Buffer:	Liquid. Purified antibody supplied in 1x PBS buffer with 0.09 % (w/v) sodium azide and 2 % sucrose.
Preservative:	Sodium azide
Precaution of Use:	This product contains Sodium azide: a POISONOUS AND HAZARDOUS SUBSTANCE which

Handling

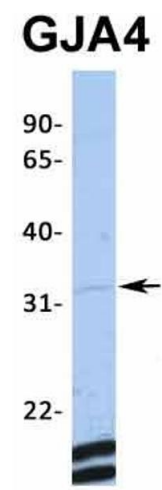
	should be handled by trained staff only.
Handling Advice:	Avoid repeated freeze-thaw cycles.
Storage:	-20 °C
Storage Comment:	For short term use, store at 2-8°C up to 1 week. For long term storage, store at -20°C in small aliquots to prevent freeze-thaw cycles.

Images



Western Blotting

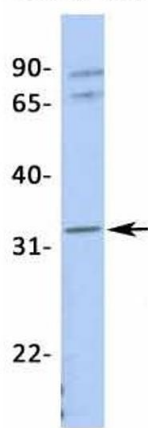
**Image 1.** WB Suggested Anti-GJA4 Antibody Titration: 0.2-1 ug/ml ELISA Titer: 1:1562500 Positive Control: 721\_B cell lysate GJA4 is strongly supported by BioGPS gene expression data to be expressed in Human 721\_B cells



Western Blotting

**Image 2.** Host: Rabbit Target Name: GJA4 Sample Type: MCF7 Antibody Dilution: 1.0ug/ml

# GJA4



## Western Blotting

**Image 3.** Host: Rabbit Target Name: GJA4 Sample Type:  
721\_B Antibody Dilution: 1.0ug/ml

Please check the [product details page](#) for more images. Overall 6 images are available for ABIN2774856.