

Datasheet for ABIN2774865
anti-GJC2 antibody (Middle Region)[Go to Product page](#)

6 Images

Overview

Quantity:	100 µL
Target:	GJC2
Binding Specificity:	Middle Region
Reactivity:	Human, Rabbit
Host:	Rabbit
Clonality:	Polyclonal
Conjugate:	This GJC2 antibody is un-conjugated
Application:	Western Blotting (WB), Immunohistochemistry (IHC)

Product Details

Immunogen:	The immunogen is a synthetic peptide directed towards the middle region of human GJC2
Sequence:	APASRTGSAT SAGTVGEQGR PGTHERPGAK PRAGSEKGS A SSRDGKTTVW
Predicted Reactivity:	Human: 100%, Rabbit: 100%
Characteristics:	This is a rabbit polyclonal antibody against GJC2. It was validated on Western Blot using a cell lysate as a positive control.
Purification:	Affinity Purified

Target Details

Target:	GJC2
Alternative Name:	GJC2 (GJC2 Products)

Target Details

Background:	<p>GJC2 is a gap junction protein. Gap junction proteins are members of a large family of homologous connexins and comprise 4 transmembrane, 2 extracellular, and 3 cytoplasmic domains. This gene plays a key role in central myelination and is involved in peripheral myelination in humans. Defects in this gene are the cause of autosomal recessive Pelizaeus-Merzbacher-like disease-1. This gene encodes a gap junction protein. Gap junction proteins are members of a large family of homologous connexins and comprise 4 transmembrane, 2 extracellular, and 3 cytoplasmic domains. This gene plays a key role in central myelination and is involved in peripheral myelination in humans. Defects in this gene are the cause of autosomal recessive Pelizaeus-Merzbacher-like disease-1.</p> <p>Alias Symbols: CX46.6, Cx47, GJA12, MGC105119, PMLDAR, HLD2, SPG44, LMPH1C</p> <p>Protein Interaction Partner: ALB,</p> <p>Protein Size: 439</p>
Molecular Weight:	47 kDa
Gene ID:	57165
NCBI Accession:	NM_020435 , NP_065168
UniProt:	Q5T442

Application Details

Application Notes:	Optimal working dilutions should be determined experimentally by the investigator.
Comment:	Antigen size: 439 AA
Restrictions:	For Research Use only

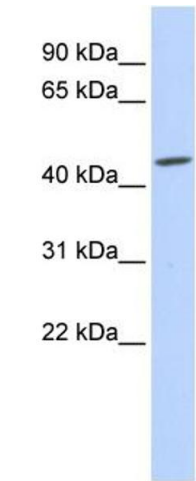
Handling

Format:	Liquid
Concentration:	Lot specific
Buffer:	Liquid. Purified antibody supplied in 1x PBS buffer with 0.09 % (w/v) sodium azide and 2 % sucrose.
Preservative:	Sodium azide
Precaution of Use:	This product contains Sodium azide: a POISONOUS AND HAZARDOUS SUBSTANCE which should be handled by trained staff only.
Handling Advice:	Avoid repeated freeze-thaw cycles.

Handling

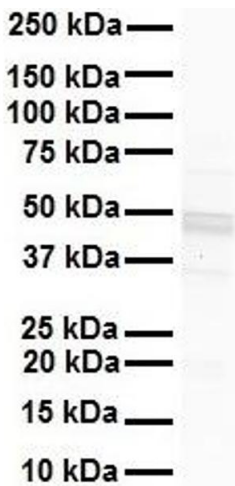
Storage:	-20 °C
Storage Comment:	For short term use, store at 2-8°C up to 1 week. For long term storage, store at -20°C in small aliquots to prevent freeze-thaw cycles.

Images



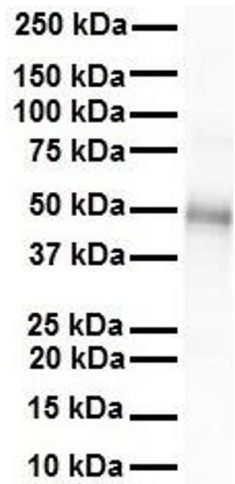
Western Blotting

Image 1. WB Suggested Anti-GJC2 Antibody Titration: 0.2-1 ug/ml ELISA Titer: 1:312500 Positive Control: MCF7 cell lysate



Western Blotting

Image 2. WB Suggested Anti-GJC2 antibody Titration: 1 ug/mL Sample Type: Human liver



Western Blotting

Image 3. WB Suggested Anti-GJC2 antibody Titration: 1 ug/mL Sample Type: Human heart

Please check the [product details page](#) for more images. Overall 6 images are available for ABIN2774865.