

Datasheet for ABIN2774866  
**anti-GJD2 antibody (Middle Region)**[Go to Product page](#)

## 4 Images

## Overview

|                      |   |
|----------------------|---|
| Quantity:            | 100 µL  |
| Target:              | GJD2  |
| Binding Specificity: | Middle Region   |
| Reactivity:          | Human, Mouse, Rat, Cow, Dog, Guinea Pig, Horse, Rabbit, Zebrafish (Danio rerio) |
| Host:                | Rabbit  |
| Clonality:           | Polyclonal  |
| Conjugate:           | This GJD2 antibody is un-conjugated   |
| Application:         | Western Blotting (WB), Immunohistochemistry (IHC)                               |

## Product Details

|                       |  |
|-----------------------|--|
| Immunogen:            | The immunogen is a synthetic peptide directed towards the middle region of human GJD2  |
| Sequence:             | ELNHLGWRKI KLAVRGAQAK RKSIYEIRNK DLPRVSPNF GRTQSSDSAY  |
| Predicted Reactivity: | Cow: 100%, Dog: 100%, Guinea Pig: 100%, Horse: 100%, Human: 100%, Mouse: 100%, Rabbit: 100%, Rat: 100%, Zebrafish: 92%         |
| Characteristics:      | This is a rabbit polyclonal antibody against GJD2. It was validated on Western Blot using a cell lysate as a positive control. |
| Purification:         | Affinity Purified  |

## Target Details

|         |      |
|---------|------|
| Target: | GJD2 |
|---------|------|

## Target Details

|                   |   |
|-------------------|---|
| Alternative Name: | GJD2 ( <a href="#">GJD2 Products</a> )  |
| Background:       | <p>GJD2 is a member of the connexin gene family that is expressed predominantly in mammalian neurons. Connexins associate in groups of 6 and are organized radially around a central pore to form connexons. Each gap junction intercellular channel is formed by the conjunction of 2 connexons. This gene is a member of the connexin gene family that is expressed predominantly in mammalian neurons. Connexins associate in groups of 6 and are organized radially around a central pore to form connexons. Each gap junction intercellular channel is formed by the conjunction of 2 connexons.</p> <p>Alias Symbols: CX36, GJA9, MGC138315, MGC138319</p> <p>Protein Size: 321</p> |
| Molecular Weight: | 36 kDa  |
| Gene ID:          | 57369   |
| NCBI Accession:   | <a href="#">NM_020660</a> , <a href="#">NP_065711</a>   |
| UniProt:          | <a href="#">Q9UKL4</a>  |

## Application Details

|                    |  |
|--------------------|--|
| Application Notes: | Optimal working dilutions should be determined experimentally by the investigator. |
| Comment:           | Antigen size: 321 AA   |
| Restrictions:      | For Research Use only  |

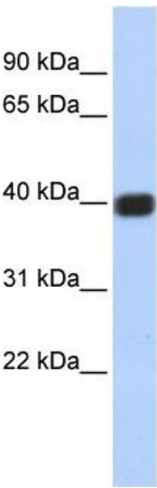
## Handling

|                    |  |
|--------------------|--|
| Format:            | Liquid   |
| Concentration:     | Lot specific   |
| Buffer:            | Liquid. Purified antibody supplied in 1x PBS buffer with 0.09 % (w/v) sodium azide and 2 % sucrose.                    |
| Preservative:      | Sodium azide   |
| Precaution of Use: | This product contains Sodium azide: a POISONOUS AND HAZARDOUS SUBSTANCE which should be handled by trained staff only. |
| Handling Advice:   | Avoid repeated freeze-thaw cycles.   |
| Storage:           | -20 °C   |

Handling

Storage Comment: For short term use, store at 2-8°C up to 1 week. For long term storage, store at -20°C in small aliquots to prevent freeze-thaw cycles.

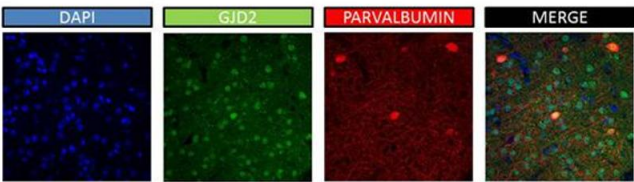
Images



**Western Blotting**

**Image 1.** WB Suggested Anti-GJD2 Antibody Titration: 0.2-1 ug/ml ELISA Titer: 1:62500 Positive Control: Jurkat cell lysate GJD2 is supported by BioGPS gene expression data to be expressed in Jurkat

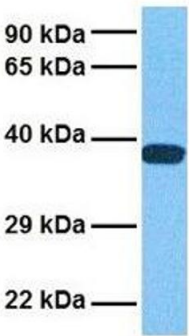
Aviva GJD2 stains SSC in P42 mouse



Application data in forum

**Image 2.**

GJD2



**Western Blotting**

**Image 3.** Host: Rabbit Target Name: GJD2 Sample Tissue: Human 293T Antibody Dilution: 1.0ug/ml

Please check the [product details page](#) for more images. Overall 4 images are available for ABIN2774866.