

Datasheet for ABIN2774872

**anti-Gap Junction Protein, delta 3, 31.9kDa (GJD3) (C-Term)
antibody**[Go to Product page](#)**1** Image

Overview

Quantity:	100 µL
Target:	Gap Junction Protein, delta 3, 31.9kDa (GJD3)
Binding Specificity:	C-Term
Reactivity:	Human
Host:	Rabbit
Clonality:	Polyclonal
Conjugate:	Un-conjugated
Application:	Western Blotting (WB)

Product Details

Sequence:	GLLSALLSVA ELGHLLWKGR PRAGERDNRC NRAHEEAQKL LPPPPPPPPP
Predicted Reactivity:	Human: 100%
Characteristics:	This is a rabbit polyclonal antibody against GJD3. It was validated on Western Blot.
Purification:	Affinity Purified

Target Details

Target:	Gap Junction Protein, delta 3, 31.9kDa (GJD3)
Alternative Name:	GJD3 (GJD3 Products)
Background:	This gene is a member of the large family of connexins that are required for the formation of gap junctions. Six connexin monomers form a hemichannel, or connexon, on the cell surface.

Target Details

This connexon can interact with a connexon from a neighboring cell, thus forming a channel linking the cytoplasm of the 2 cells.

Alias Symbols: CX31.9, Cx30.2, GJA11, GJC1

Protein Interaction Partner: TJP1,

Protein Size: 294

Molecular Weight: 32 kDa

Gene ID: 125111

NCBI Accession: [NM_152219](#), [NP_689343](#)

UniProt: [Q8N144](#)

Pathways: [Cell-Cell Junction Organization](#)

Application Details

Application Notes: Optimal working dilutions should be determined experimentally by the investigator.

Comment: Antigen size: 294 AA

Restrictions: For Research Use only

Handling

Format: Liquid

Concentration: Lot specific

Buffer: Liquid. Purified antibody supplied in 1x PBS buffer with 0.09 % (w/v) sodium azide and 2 % sucrose.

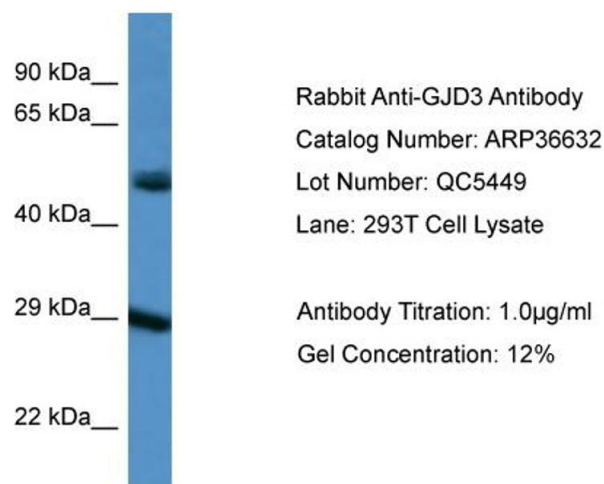
Preservative: Sodium azide

Precaution of Use: This product contains Sodium azide: a POISONOUS AND HAZARDOUS SUBSTANCE which should be handled by trained staff only.

Handling Advice: Avoid repeated freeze-thaw cycles.

Storage: -20 °C

Storage Comment: For short term use, store at 2-8°C up to 1 week. For long term storage, store at -20°C in small aliquots to prevent freeze-thaw cycles.



Western Blotting

Image 1. WB Suggested Anti-GJD3 Antibody Titration: 1.0 ug/ml Positive Control: 293T Whole Cell