

Datasheet for ABIN2774882

**anti-MCM2 antibody (N-Term)**[Go to Product page](#)**2** Images**1** Publication

## Overview

Quantity:	100 µL
Target:	MCM2
Binding Specificity:	N-Term
Reactivity:	Human, Mouse, Rat, Dog, Horse, Rabbit, Cow, Guinea Pig, Pig
Host:	Rabbit
Clonality:	Polyclonal
Conjugate:	This MCM2 antibody is un-conjugated
Application:	Western Blotting (WB)

## Product Details

Immunogen:	The immunogen is a synthetic peptide directed towards the N terminal region of human MCM2
Sequence:	PGRSSRRTDA LTSSPGRDLP PFEDESEGLL GTEGPLLEEEE DGEELIGDGM
Predicted Reactivity:	Cow: 100%, Dog: 93%, Guinea Pig: 93%, Horse: 100%, Human: 100%, Mouse: 93%, Pig: 100%, Rabbit: 100%, Rat: 93%
Characteristics:	This is a rabbit polyclonal antibody against MCM2. It was validated on Western Blot using a cell lysate as a positive control.
Purification:	Protein A purified

## Target Details

Target:	MCM2
---------	------

## Target Details

Alternative Name:	MCM2 ( <a href="#">MCM2 Products</a> )
Background:	<p>The protein encoded by MCM2 is one of the highly conserved mini-chromosome maintenance proteins (MCM) that are involved in the initiation of eukaryotic genome replication. The hexameric protein complex formed by MCM proteins is a key component of the pre-replication complex (pre_RC) and may be involved in the formation of replication forks and in the recruitment of other DNA replication related proteins. This protein forms a complex with MCM4, 6, and 7, and has been shown to regulate the helicase activity of the complex. This protein is phosphorylated, and thus regulated by, protein kinases CDC2 and CDC7.</p> <p>Alias Symbols: BM28, CCNL1, CDCL1, cdc19, D3S3194, MITOTIN</p> <p>Protein Interaction Partner: HUWE1, MCM6, CHFR, SUMO2, MCMBP, UBC, SUMO1, MDM2, MCM7, MCM4, HSP90AB1, ACLY, PRRC1, HYOU1, CAP1, NCL, POLA1, TONSL, SNF8, ELL, TCEA1, POLR2A, CDK6, CDK4, CDC6, MCM10, ORC6, CCNB2, VCAM1, P2RX4, ORC5, ORC2, MCM5, MCM3, ITGA4, FN1, CSNK2A1, CDKN2A, DBF4,</p> <p>Protein Size: 904</p>
Molecular Weight:	99 kDa
Gene ID:	4171
NCBI Accession:	<a href="#">NM_004526</a> , <a href="#">NP_004517</a>
UniProt:	<a href="#">P49736</a>
Pathways:	<a href="#">DNA Damage Repair</a> , <a href="#">Mitotic G1-G1/S Phases</a> , <a href="#">DNA Replication</a> , <a href="#">Chromatin Binding</a> , <a href="#">Synthesis of DNA</a>

## Application Details

Application Notes:	Optimal working dilutions should be determined experimentally by the investigator.
Comment:	Antigen size: 904 AA
Restrictions:	For Research Use only

## Handling

Format:	Liquid
Concentration:	Lot specific
Buffer:	Liquid. Purified antibody supplied in 1x PBS buffer with 0.09 % (w/v) sodium azide and 2 % sucrose.

## Handling

Preservative:	Sodium azide
Precaution of Use:	This product contains Sodium azide: a POISONOUS AND HAZARDOUS SUBSTANCE which should be handled by trained staff only.
Handling Advice:	Avoid repeated freeze-thaw cycles.
Storage:	-20 °C
Storage Comment:	For short term use, store at 2-8°C up to 1 week. For long term storage, store at -20°C in small aliquots to prevent freeze-thaw cycles.

## Publications

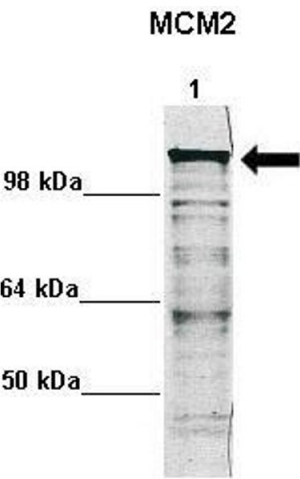
Product cited in:	Rizwani, Alexandrow, Chellappan: "Prohibitin physically interacts with MCM proteins and inhibits mammalian DNA replication." in: <b>Cell cycle (Georgetown, Tex.)</b> , Vol. 8, Issue 10, pp. 1621-9, (2009) ( <a href="#">PubMed</a> ).
-------------------	--

## Images



### Western Blotting

**Image 1.** WB Suggested Anti-MCM2 Antibody Titration: 1.25ug/ml ELISA Titer: 1:312500 Positive Control: Jurkat cell lysate MCM2 is supported by BioGPS gene expression data to be expressed in Jurkat



**Western Blotting**

**Image 2.** WB Suggested Anti-MCM2 Antibody Positive Control: Lane 1: 5ug mouse neural stem cell lysate Primary Antibody Dilution : 1:1000 Secondary Antibody : Anti rabbit - IR-dye Secondary Antibody Dilution : 1:10,000 Submitted by: Anonymous