

Datasheet for ABIN2774884
anti-MCM4 antibody (Middle Region)[Go to Product page](#)

2 Images

Overview

Quantity:	100 µL
Target:	MCM4
Binding Specificity:	Middle Region
Reactivity:	Human, Mouse, Rat, Rabbit, Cow, Guinea Pig, Dog, Horse, Zebrafish (Danio rerio)
Host:	Rabbit
Clonality:	Polyclonal
Conjugate:	This MCM4 antibody is un-conjugated
Application:	Western Blotting (WB), Immunohistochemistry (IHC)

Product Details

Immunogen:	The immunogen is a synthetic peptide directed towards the middle region of human MCM4
Sequence:	VYKTHIDVIH YRKTDARKLH GLDEEAEQKL FSEKRVLLK ELSRKPDIE
Predicted Reactivity:	Cow: 100%, Dog: 100%, Guinea Pig: 100%, Horse: 100%, Human: 100%, Mouse: 100%, Rabbit: 100%, Rat: 100%, Zebrafish: 85%
Characteristics:	This is a rabbit polyclonal antibody against MCM4. It was validated on Western Blot using a cell lysate as a positive control.
Purification:	Protein A purified

Target Details

Target:	MCM4
---------	------

Target Details

Alternative Name:	MCM4 (MCM4 Products)
Background:	<p>The protein encoded by MCM4 is one of the highly conserved mini-chromosome maintenance proteins (MCM) that are essential for the initiation of eukaryotic genome replication. The hexameric protein complex formed by MCM proteins is a key component of the pre-replication complex (pre_RC) and may be involved in the formation of replication forks and in the recruitment of other DNA replication related proteins. The MCM complex consisting of this protein and MCM2, 6 and 7 proteins possesses DNA helicase activity, and may act as a DNA unwinding enzyme. The phosphorylation of this protein by CDC2 kinase reduces the DNA helicase activity and chromatin binding of the MCM complex. The MCM4 gene is mapped to a region on the chromosome 8 head-to-head next to the PRKDC/DNA-PK, a DNA-activated protein kinase involved in the repair of DNA double-strand breaks.</p> <p>Alias Symbols: CDC21, CDC54, hCdc21, P1-CDC21</p> <p>Protein Interaction Partner: HUWE1, UBC, PCNA, SUMO2, FKBP5, MCMBP, MDM2, POLK, CLUH, NCKAP1, CAP1, CAP2, EIF3B, MCM2, KPNA3, PRMT1, FKBP4, MCM7, MCM6, FBXW4, FBXO46, ITGA4, CDC5L, gag-pol, ORC6, CCNA1, VCAM1, DBF4, CDC7, LIG4, MCM5, MCM3, DCTN2, SF3A1, UBD, NEDD8, TONSL, SIRT7, ASF1</p> <p>Protein Size: 863</p>
Molecular Weight:	95 kDa
Gene ID:	4173
NCBI Accession:	NM_005914 , NP_005905
UniProt:	P33991
Pathways:	DNA Damage Repair , Mitotic G1-G1/S Phases , DNA Replication , Chromatin Binding , Synthesis of DNA

Application Details

Application Notes:	Optimal working dilutions should be determined experimentally by the investigator.
Comment:	Antigen size: 863 AA
Restrictions:	For Research Use only

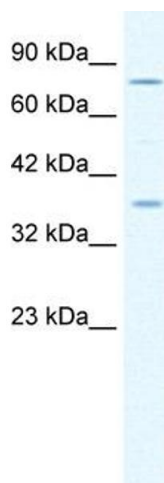
Handling

Format:	Liquid
Concentration:	Lot specific

Handling

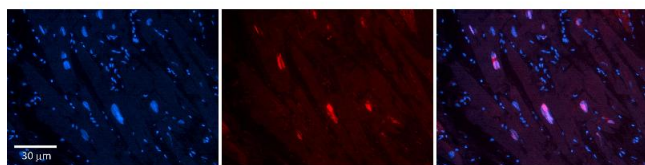
Buffer:	Liquid. Purified antibody supplied in 1x PBS buffer with 0.09 % (w/v) sodium azide and 2 % sucrose.
Preservative:	Sodium azide
Precaution of Use:	This product contains Sodium azide: a POISONOUS AND HAZARDOUS SUBSTANCE which should be handled by trained staff only.
Handling Advice:	Avoid repeated freeze-thaw cycles.
Storage:	-20 °C
Storage Comment:	For short term use, store at 2-8°C up to 1 week. For long term storage, store at -20°C in small aliquots to prevent freeze-thaw cycles.

Images



Western Blotting

Image 1. WB Suggested Anti-MCM4 Antibody Titration: 1.25ug/ml ELISA Titer: 1:12500 Positive Control: Jurkat cell lysate MCM4 is strongly supported by BioGPS gene expression data to be expressed in Human Jurkat cells



Immunohistochemistry

Image 2. Rabbit Anti-MCM4 Antibody Formalin Fixed Paraffin Embedded Tissue: Human heart Tissue Observed Staining: Nucleus Primary Antibody Concentration: 1:100 Other Working Concentrations: N/A Secondary Antibody: Donkey anti-Rabbit-Cy3 Secondary Antibody Concentration: 1:200 Magnification: 20X Exposure Time: 0.5 - 2.0 sec