

Datasheet for ABIN2774885
anti-MCM6 antibody (C-Term)[Go to Product page](#)

3 Images

1 Publication

Overview

Quantity:	100 µL
Target:	MCM6
Binding Specificity:	C-Term
Reactivity:	Human, Mouse, Rat, Dog, Cow, Guinea Pig, Horse, Rabbit
Host:	Rabbit
Clonality:	Polyclonal
Conjugate:	This MCM6 antibody is un-conjugated
Application:	Western Blotting (WB), Immunohistochemistry (IHC)

Product Details

Immunogen:	The immunogen is a synthetic peptide directed towards the C terminal region of human MCM6
Sequence:	RIIEKVIHRL THYDHVLIEL TQAGLKGSTE GSESYEEDPY LVVNPNYLLE
Predicted Reactivity:	Cow: 100%, Dog: 100%, Guinea Pig: 100%, Horse: 100%, Human: 100%, Mouse: 93%, Rabbit: 100%, Rat: 93%
Characteristics:	This is a rabbit polyclonal antibody against MCM6. It was validated on Western Blot and immunohistochemistry.
Purification:	Affinity Purified

Target Details

Target:	MCM6
---------	------

Target Details

Alternative Name: MCM6 ([MCM6 Products](#))

Background: The protein encoded by the MCM6 gene is one of the highly conserved mini-chromosome maintenance proteins (MCM) that are essential for the initiation of eukaryotic genome replication. The hexameric protein complex formed by the MCM proteins is a key component of the pre-replication complex (pre_RC) and may be involved in the formation of replication forks and in the recruitment of other DNA replication related proteins. The MCM complex consisting of this protein and MCM2, 4 and 7 proteins possesses DNA helicase activity, and may act as a DNA unwinding enzyme. The phosphorylation of the complex by CDC2 kinase reduces the helicase activity, suggesting a role in the regulation of DNA replication. The protein encoded by this gene is one of the highly conserved mini-chromosome maintenance proteins (MCM) that are essential for the initiation of eukaryotic genome replication. The hexameric protein complex formed by the MCM proteins is a key component of the pre-replication complex (pre_RC) and may be involved in the formation of replication forks and in the recruitment of other DNA replication related proteins. The MCM complex consisting of this protein and MCM2, 4 and 7 proteins possesses DNA helicase activity, and may act as a DNA unwinding enzyme. The phosphorylation of the complex by CDC2 kinase reduces the helicase activity, suggesting a role in the regulation of DNA replication.

Alias Symbols: MCG40308, Mis5, P105MCM

Protein Interaction Partner: MCM10, HUWE1, SNRPB2, MCM2, NUDT2, ZBTB9, FAM161A, UBC, SUMO2, SUMO3, MCMBP, POLK, MCM4, MCM3, KPNA3, HSP90AB1, CDKN2A, ACLY, CAP1, ING5, MCM6, BAG3, TONSL, MMS22L, ASF1B, SMC1A, MCM7, CCNA1, VCAM1, ITGA4, FN1, gag-pol, GMNN, ORC6, DBF4, CDC7, PAXIP1, TP5

Protein Size: 821

Molecular Weight: 90 kDa

Gene ID: 4175

NCBI Accession: [NM_005915](#), [NP_005906](#)

UniProt: [Q14566](#)

Pathways: [DNA Damage Repair](#), [Mitotic G1-G1/S Phases](#), [DNA Replication](#), [Synthesis of DNA](#)

Application Details

Application Notes: Optimal working dilutions should be determined experimentally by the investigator.

Comment: Antigen size: 821 AA

Restrictions: For Research Use only

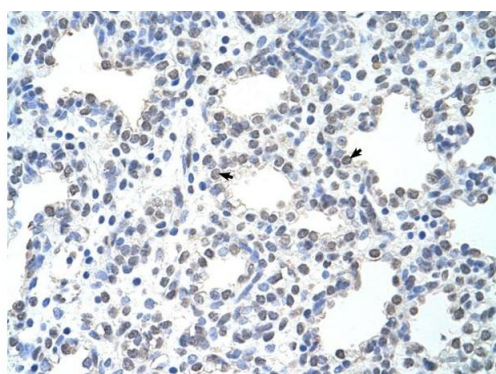
Handling

Format:	Liquid
Concentration:	Lot specific
Buffer:	Liquid. Purified antibody supplied in 1x PBS buffer with 0.09 % (w/v) sodium azide and 2 % sucrose.
Preservative:	Sodium azide
Precaution of Use:	This product contains Sodium azide: a POISONOUS AND HAZARDOUS SUBSTANCE which should be handled by trained staff only.
Handling Advice:	Avoid repeated freeze-thaw cycles.
Storage:	-20 °C
Storage Comment:	For short term use, store at 2-8°C up to 1 week. For long term storage, store at -20°C in small aliquots to prevent freeze-thaw cycles.

Publications

Product cited in:	Lazrek, Goffard, Schanen, Karquel, Bocket, Lion, Devaux, Hedouin, Gosset, Hober: "Detection of hepatitis C virus antibodies and RNA among medicolegal autopsy cases in Northern France." in: Diagnostic microbiology and infectious disease , Vol. 55, Issue 1, pp. 55-8, (2006) (PubMed).
-------------------	---

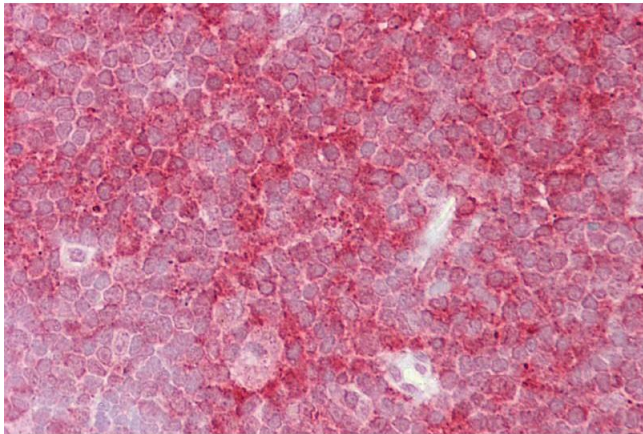
Images



Rabbit Anti-MCM6 Antibody
Catalog Number: ARP36650
Lot Number: QC10684
Paraffin Embedded Tissue: Human Lung
Cells with Positive label: Alveolar cells (Indicated with Arrows)
Antibody Concentration: 4.0-8.0 µg/ml
Magnification: 400X

Immunohistochemistry

Image 1. Human Intestine



Immunohistochemistry

Image 2. Thymus



Western Blotting

Image 3. WB Suggested Anti-MCM6 Antibody Titration: 0.2-1 ug/ml ELISA Titer: 1:62500 Positive Control: HepG2 cell lysate