

Datasheet for ABIN2774890
anti-MCM10 antibody (Middle Region)[Go to Product page](#)

2 Images

Overview

Quantity:	100 µL
Target:	MCM10
Binding Specificity:	Middle Region
Reactivity:	Human, Dog, Cow, Rabbit, Horse, Pig
Host:	Rabbit
Clonality:	Polyclonal
Conjugate:	This MCM10 antibody is un-conjugated
Application:	Western Blotting (WB)

Product Details

Immunogen:	The immunogen is a synthetic peptide directed towards the middle region of human MCM10
Sequence:	PKLSALAEAK KLAAITKLRA KGQVLTKTNP NSIKKKQKDP QDILEVKERV
Predicted Reactivity:	Cow: 77%, Dog: 86%, Horse: 93%, Human: 100%, Pig: 77%, Rabbit: 86%
Characteristics:	This is a rabbit polyclonal antibody against MCM10. It was validated on Western Blot using a cell lysate as a positive control.
Purification:	Affinity Purified

Target Details

Target:	MCM10
Alternative Name:	MCM10 (MCM10 Products)

Target Details

Background:	<p>This protein is one of the highly conserved mini-chromosome maintenance proteins (MCM) that are involved in the initiation of eukaryotic genome replication. The hexameric protein complex formed by MCM proteins is a key component of the pre-replication complex (pre-RC) and it may be involved in the formation of replication forks and in the recruitment of other DNA replication related proteins. This protein can interact with MCM2 and MCM6, as well as with the origin recognition protein ORC2. It is regulated by proteolysis and phosphorylation in a cell cycle-dependent manner. Studies of a similar protein in <i>Xenopus</i> suggest that the chromatin binding of this protein at the onset of DNA replication is after pre-RC assembly and before origin unwinding. The protein encoded by this gene is one of the highly conserved mini-chromosome maintenance proteins (MCM) that are involved in the initiation of eukaryotic genome replication. The hexameric protein complex formed by MCM proteins is a key component of the pre-replication complex (pre-RC) and it may be involved in the formation of replication forks and in the recruitment of other DNA replication related proteins. This protein can interact with MCM2 and MCM6, as well as with the origin recognition protein ORC2. It is regulated by proteolysis and phosphorylation in a cell cycle-dependent manner. Studies of a similar protein in <i>Xenopus</i> suggest that the chromatin binding of this protein at the onset of DNA replication is after pre-RC assembly and before origin unwinding. Alternatively spliced transcript variants encoding distinct isoforms have been identified.</p> <p>Alias Symbols: CNA43, MGC126776, PRO2249, DNA43</p> <p>Protein Interaction Partner: GOLGA2, MCM6, TRIM37, CCND3, ORC3, CDC45, CDC7, UBC, ORC4, ORC2, MCM7, MCM3, MCM2, CDKN2A, CDKN1A, CDK6, CDC6, CDC5L, CCND1, APP, RBX1, VPRBP, CUL4A, DDB1, IKBKG, RPAP1, CEP70, HAUS1, CCDC85B, DPPA2, NINL, ZBTB8B, HOOK2, MCM4, ZBTB43, CEP72, CALCOCO2, KRT</p> <p>Protein Size: 874</p>
-------------	---

Molecular Weight:	98 kDa
-------------------	--------

Gene ID:	55388
----------	-------

NCBI Accession:	NM_018518 , NP_060988
-----------------	---

UniProt:	B7ZKZ8
----------	------------------------

Pathways:	Mitotic G1-G1/S Phases , DNA Replication
-----------	--

Application Details

Application Notes:	Optimal working dilutions should be determined experimentally by the investigator.
--------------------	--

Comment:	Antigen size: 874 AA
----------	----------------------

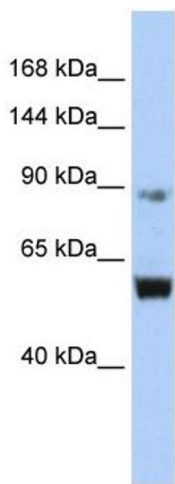
Application Details

Restrictions: For Research Use only

Handling

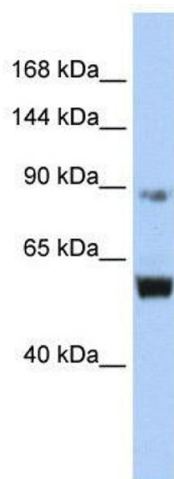
Format:	Liquid
Concentration:	Lot specific
Buffer:	Liquid. Purified antibody supplied in 1x PBS buffer with 0.09 % (w/v) sodium azide and 2 % sucrose.
Preservative:	Sodium azide
Precaution of Use:	This product contains Sodium azide: a POISONOUS AND HAZARDOUS SUBSTANCE which should be handled by trained staff only.
Handling Advice:	Avoid repeated freeze-thaw cycles.
Storage:	-20 °C
Storage Comment:	For short term use, store at 2-8°C up to 1 week. For long term storage, store at -20°C in small aliquots to prevent freeze-thaw cycles.

Images



Western Blotting

Image 1. WB Suggested Anti-MCM10 Antibody Titration: 0.2-1 ug/ml ELISA Titer: 1:1562500 Positive Control: Jurkat cell lysate MCM10 is supported by BioGPS gene expression data to be expressed in Jurkat



Western Blotting

Image 2. WB Suggested Anti-MCM10

Antibody Titration: 0.2-1 µg/mL ELISA Titer: 1:1562500

Positive Control: Jurkat cell lysate

MCM10 is supported by BioGPS gene expression data to be expressed in Jurkat