

Datasheet for ABIN2774895
anti-MCM10 antibody (N-Term)



[Go to Product page](#)

1 Image

Overview

Quantity:	100 µL
Target:	MCM10
Binding Specificity:	N-Term
Reactivity:	Human, Mouse, Rat, Dog, Cow, Rabbit, Guinea Pig
Host:	Rabbit
Clonality:	Polyclonal
Conjugate:	This MCM10 antibody is un-conjugated
Application:	Western Blotting (WB)

Product Details

Sequence:	DEFDELFDAD GDGESYTEEA GSGEEGKTGN QEERLATLFG DVEDLTDDEV
Predicted Reactivity:	Cow: 92%, Dog: 86%, Guinea Pig: 92%, Human: 100%, Mouse: 100%, Rabbit: 92%, Rat: 100%
Characteristics:	This is a rabbit polyclonal antibody against Mcm10. It was validated on Western Blot.
Purification:	Affinity Purified

Target Details

Target:	MCM10
Alternative Name:	Mcm10 (MCM10 Products)
Background:	Mcm10 acts as a replication initiation factor that brings together the MCM2-7 helicase and the DNA polymerase alpha/primase complex in order to initiate DNA replication. Additionally, plays

Target Details

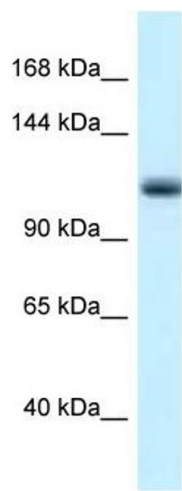
	a role in preventing DNA damage during replication. Alias Symbols: 2410041F14Rik, AU018508, C330019M07Rik, C79164 Protein Interaction Partner: Foxp3, Ndn, Protein Size: 885
Molecular Weight:	98 kDa
Gene ID:	70024
NCBI Accession:	NM_027290 , NP_081566
UniProt:	Q0VBD2
Pathways:	Mitotic G1-G1/S Phases , DNA Replication

Application Details

Application Notes:	Optimal working dilutions should be determined experimentally by the investigator.
Comment:	Antigen size: 885 AA
Restrictions:	For Research Use only

Handling

Format:	Liquid
Concentration:	Lot specific
Buffer:	Liquid. Purified antibody supplied in 1x PBS buffer with 0.09 % (w/v) sodium azide and 2 % sucrose.
Preservative:	Sodium azide
Precaution of Use:	This product contains Sodium azide: a POISONOUS AND HAZARDOUS SUBSTANCE which should be handled by trained staff only.
Handling Advice:	Avoid repeated freeze-thaw cycles.
Storage:	-20 °C
Storage Comment:	For short term use, store at 2-8°C up to 1 week. For long term storage, store at -20°C in small aliquots to prevent freeze-thaw cycles.



Western Blotting

Image 1. WB Suggested Anti-Mcm10 Antibody Titration:
1.0 ug/ml Positive Control: Mouse Pancreas