

Datasheet for ABIN2774904  
**anti-Osteopontin antibody (C-Term)**[Go to Product page](#)

4 Images

2 Publications

## Overview

Quantity:	100 µL
Target:	Osteopontin (SPP1)
Binding Specificity:	C-Term
Reactivity:	Human, Mouse, Rat, Dog, Cow, Guinea Pig, Goat, Sheep
Host:	Rabbit
Clonality:	Polyclonal
Conjugate:	This Osteopontin antibody is un-conjugated
Application:	Western Blotting (WB), Immunohistochemistry (IHC)

## Product Details

Immunogen:	The immunogen is a synthetic peptide directed towards the C terminal region of human SPP1
Sequence:	DSQELSKVSR EFHSHEFHSH EDMLVDPKS KEEDKHLKFR ISHELDSASS
Predicted Reactivity:	Cow: 86%, Dog: 79%, Goat: 79%, Guinea Pig: 86%, Human: 100%, Mouse: 86%, Rat: 79%, Sheep: 79%
Characteristics:	This is a rabbit polyclonal antibody against SPP1. It was validated on Western Blot and immunohistochemistry.
Purification:	Protein A purified

## Target Details

Target:	Osteopontin (SPP1)
---------	--------------------

## Target Details

Alternative Name:	SPP1 ( <a href="#">SPP1 Products</a> )
Background:	<p>The SPP1 gene encodes an acidic matrix protein, mainly expressed in mineralized tissues, kidney and atherosclerotic vessels. This protein also contributes to several steps in the process of prostate carcinogenesis and metastasis.</p> <p>Alias Symbols: OPN, BNSP, BSPI, ETA-1</p> <p>Protein Interaction Partner: SGTA, MEOX2, PARP1, BAG6, PEPD, APOA1, UBQLN4, CISD2, TUBB, CC2D1B, COMMD1, RIMS4, C2orf50, CMTM3, DSEL, ZNF804A, USP42, TMEM168, LRRC4, GRIPAP1, TMEM30A, AMOTL2, C1RL, DNTTIP2, KCNIP1, STK39, EIF3K, ZNF638, AFF4, CACNG4, SLC39A6, PLD3, SNAPIN, NCSTN, CEP</p> <p>Protein Size: 300</p>
Molecular Weight:	33 kDa
Gene ID:	6696
NCBI Accession:	<a href="#">NM_000582</a> , <a href="#">NP_000573</a>
Pathways:	<a href="#">Regulation of Cell Size</a>

## Application Details

Application Notes:	Optimal working dilutions should be determined experimentally by the investigator.
Comment:	Antigen size: 300 AA
Restrictions:	For Research Use only

## Handling

Format:	Liquid
Concentration:	Lot specific
Buffer:	Liquid. Purified antibody supplied in 1x PBS buffer with 0.09 % (w/v) sodium azide and 2 % sucrose.
Preservative:	Sodium azide
Precaution of Use:	This product contains Sodium azide: a POISONOUS AND HAZARDOUS SUBSTANCE which should be handled by trained staff only.
Handling Advice:	Avoid repeated freeze-thaw cycles.
Storage:	-20 °C

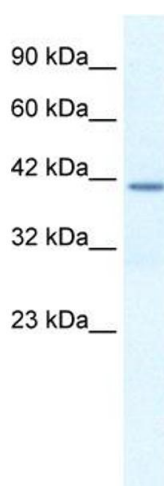
## Handling

Storage Comment: For short term use, store at 2-8°C up to 1 week. For long term storage, store at -20°C in small aliquots to prevent freeze-thaw cycles.

## Publications

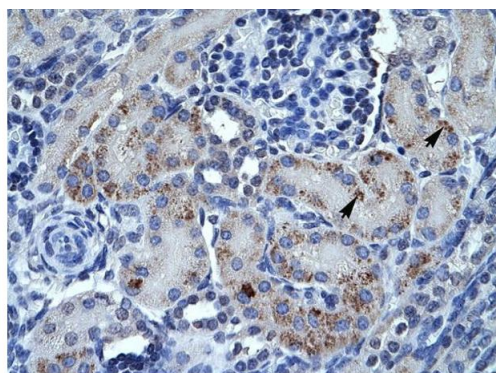
Product cited in: Harden, Perez-Carrion, Babakordi, Plummer, Hepburn, Barker, Wright, Evans, Corfe: "Evaluation of the salivary proteome as a surrogate tissue for systems biology approaches to understanding appetite." in: **Journal of proteomics**, Vol. 75, Issue 10, pp. 2916-23, (2012) ([PubMed](#)).

## Images



### Western Blotting

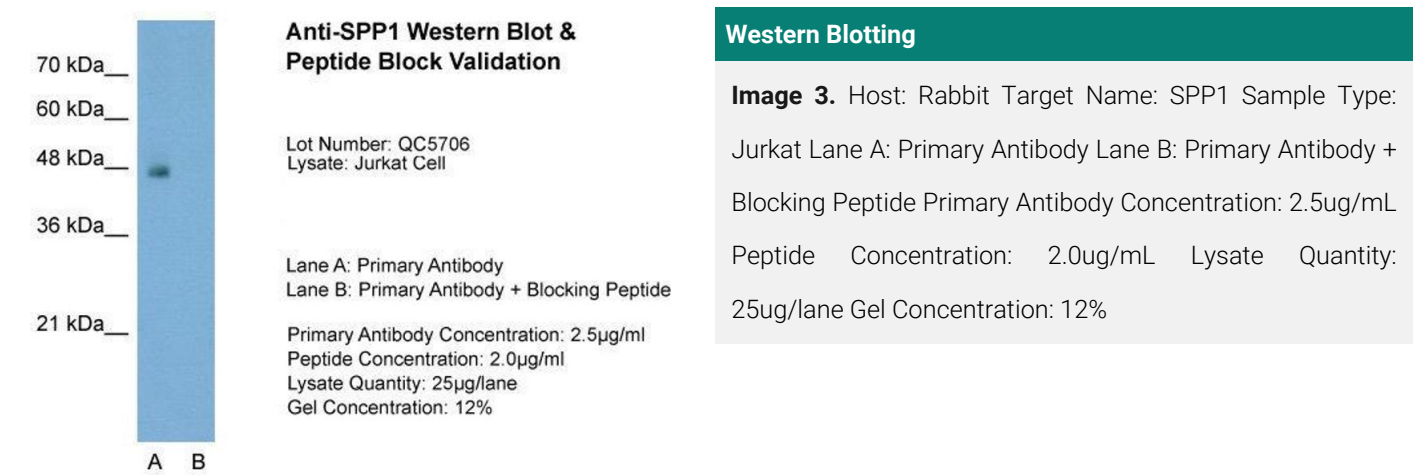
**Image 1.** WB Suggested Anti-SPP1 Antibody Titration: 1.25ug/ml ELISA Titer: 1:1562500 Positive Control: Jurkat cell lysate



Rabbit Anti-SPP1 Antibody  
Catalog Number: ARP36677  
Lot Number: QC5706  
Paraffin Embedded Tissue: Human Kidney  
Cells with Positive label: Epithelial cells of renal tubule (Indicated with Arrows)  
Antibody Concentration: 4.0-8.0 µg/ml  
Magnification: 400X

### Immunohistochemistry

**Image 2.** Human kidney



**Western Blotting**

**Image 3.** Host: Rabbit Target Name: SPP1 Sample Type: Jurkat Lane A: Primary Antibody Lane B: Primary Antibody + Blocking Peptide Primary Antibody Concentration: 2.5ug/mL Peptide Concentration: 2.0ug/mL Lysate Quantity: 25ug/lane Gel Concentration: 12%

Please check the [product details page](#) for more images. Overall 4 images are available for ABIN2774904.