

Datasheet for ABIN2774916
anti-STUB1 antibody (N-Term)[Go to Product page](#)

4 Images

Overview

| | |
|----------------------|---|
| Quantity: | 100 µL |
| Target: | STUB1 |
| Binding Specificity: | N-Term |
| Reactivity: | Human, Mouse, Rat, Cow, Guinea Pig, Zebrafish (Danio rerio) |
| Host: | Rabbit |
| Clonality: | Polyclonal |
| Conjugate: | This STUB1 antibody is un-conjugated |
| Application: | Western Blotting (WB), Immunohistochemistry (IHC) |

Product Details

| | |
|-----------------------|---|
| Immunogen: | The immunogen is a synthetic peptide directed towards the N terminal region of human STUB1 |
| Sequence: | MKGKEEKEGG ARLGAGGGSP EKSPSAQELK EQGNRLFVGR KYPEAAACYG |
| Predicted Reactivity: | Cow: 100%, Guinea Pig: 100%, Human: 100%, Mouse: 100%, Rat: 100%, Zebrafish: 93% |
| Characteristics: | This is a rabbit polyclonal antibody against STUB1. It was validated on Western Blot using a cell lysate as a positive control. |
| Purification: | Affinity Purified |

Target Details

| | |
|-------------------|--|
| Target: | STUB1 |
| Alternative Name: | STUB1 (STUB1 Products) |

Target Details

| | |
|-------------------|--|
| Background: | <p>STUB1 modulates the activity of several chaperone complexes, including Hsp70, Hsc70 and Hsp90. It has E3 ubiquitin-protein ligase activity and targets misfolded chaperone substrates towards proteasomal degradation. STUB1 mediates transfer of non-canonical short ubiquitin chains to HSPA8 that have no effect on HSPA8 degradation.</p> <p>Alias Symbols: CHIP, HSPABP2, NY-CO-7, SDCCAG7, UBOX1</p> <p>Protein Interaction Partner: HSP90AA1, HSPA8, PCSK9, OLFM3, ATCAY, CCL28, UBE2Q1, TXN2, RUSC1, HSPA1B, FMR1, ERN1, STUB1, UBE2V1, UBE2N, UBE2D3, UBE2D1, UBC, TP53, MAPT, MAP3K11, SNAI2, BAG1, HSPA4L, CDC37, DNAJB6, BAG2, BAG3, BAG4, MLF2, HSP90AB1, HSPA4, HSPA2, HSPA1L, ENDOG, TXLNG,</p> <p>Protein Size: 303</p> |
| Molecular Weight: | 35 kDa |
| Gene ID: | 10273 |
| NCBI Accession: | NM_005861 , NP_005852 |
| UniProt: | Q9UNE7 |
| Pathways: | Regulation of Hormone Metabolic Process , Response to Water Deprivation |

Application Details

| | |
|--------------------|--|
| Application Notes: | Optimal working dilutions should be determined experimentally by the investigator. |
| Comment: | Antigen size: 303 AA |
| Restrictions: | For Research Use only |

Handling

| | |
|--------------------|--|
| Format: | Liquid |
| Concentration: | Lot specific |
| Buffer: | Liquid. Purified antibody supplied in 1x PBS buffer with 0.09 % (w/v) sodium azide and 2 % sucrose. |
| Preservative: | Sodium azide |
| Precaution of Use: | This product contains Sodium azide: a POISONOUS AND HAZARDOUS SUBSTANCE which should be handled by trained staff only. |
| Handling Advice: | Avoid repeated freeze-thaw cycles. |

Handling

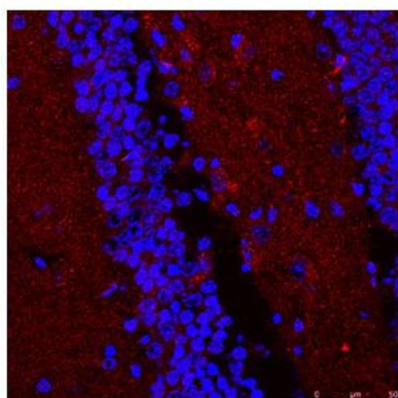
Storage: -20 °C

Storage Comment: For short term use, store at 2-8°C up to 1 week. For long term storage, store at -20°C in small aliquots to prevent freeze-thaw cycles.

Images



STUB1



See Immunohistochemistry 1 Data for more information.

Western Blotting

Image 1. WB Suggested Anti-STUB1 Antibody Titration: 0.2-1 ug/ml ELISA Titer: 1:312500 Positive Control: Human Spleen

Immunohistochemistry

Image 2. Sample Type: Mouse Brain Slices

Red: primary

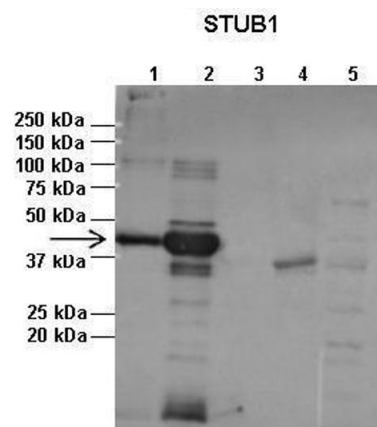
Blue: DAPI

Primary Dilution: 1:400

Secondary Antibody: Anti-Rabbit IgG Alexa 594

Secondary Dilution: 1:400

Image Submitted By: Adahir Labrador-Garrido and Cintia Roodveldt
University of Seville



Western Blotting

Image 3. Lanes: 1:1ug insoluble STUB1 protein, 2:1ug soluble STUB1 protein, 3:1ug EPM2A protein, 4:1ug insoluble PPP1R3C protein, 5:1ug soluble PPP1R3C protein
Primary Antibody Dilution: 1:2500 Secondary Antibody: Anti-rabbit-AP Secondary Antibody Dilution: 1:20,000 Gene Name: STUB1 Submitted by: Pedro Castanheira, Biocant

See Immunoblot 2 Data and customer Feedback for more Information

Please check the [product details page](#) for more images. Overall 4 images are available for ABIN2774916.