

Datasheet for ABIN2774917
anti-STUB1 antibody (C-Term)[Go to Product page](#)

4 Images

Overview

Quantity:	100 µL
Target:	STUB1
Binding Specificity:	C-Term
Reactivity:	Human, Mouse, Rat, Cow, Guinea Pig, Dog, Horse, Zebrafish (Danio rerio)
Host:	Rabbit
Clonality:	Polyclonal
Conjugate:	This STUB1 antibody is un-conjugated
Application:	Western Blotting (WB), Immunohistochemistry (IHC)

Product Details

Immunogen:	The immunogen is a synthetic peptide directed towards the C terminal region of human STUB1
Sequence:	VDEKRKKRDI PDYLCGKISF ELMREPCITP SGITYDRKDI EEHLQRVGHF
Predicted Reactivity:	Cow: 100%, Dog: 100%, Guinea Pig: 100%, Horse: 100%, Human: 100%, Mouse: 100%, Rat: 100%, Zebrafish: 93%
Characteristics:	This is a rabbit polyclonal antibody against STUB1. It was validated on Western Blot using a cell lysate as a positive control.
Purification:	Affinity Purified

Target Details

Target:	STUB1
---------	-------

Target Details

Alternative Name:	STUB1 (STUB1 Products)
Background:	<p>STUB1 modulates the activity of several chaperone complexes, including Hsp70, Hsc70 and Hsp90. It has E3 ubiquitin-protein ligase activity and targets misfolded chaperone substrates towards proteasomal degradation. STUB1 mediates transfer of non-canonical short ubiquitin chains to HSPA8 that have no effect on HSPA8 degradation.</p> <p>Alias Symbols: CHIP, HSPABP2, NY-CO-7, SDCCAG7, UBOX1</p> <p>Protein Interaction Partner: HSP90AA1, HSPA8, PCSK9, OLFM3, ATCAY, CCL28, UBE2Q1, TXN2, RUSC1, HSPA1B, FMR1, ERN1, STUB1, UBE2V1, UBE2N, UBE2D3, UBE2D1, UBC, TP53, MAPT, MAP3K11, SNAI2, BAG1, HSPA4L, CDC37, DNAJB6, BAG2, BAG3, BAG4, MLF2, HSP90AB1, HSPA4, HSPA2, HSPA1L, ENDOG, TXLNG,</p> <p>Protein Size: 303</p>
Molecular Weight:	35 kDa
Gene ID:	10273
NCBI Accession:	NM_005861 , NP_005852
UniProt:	Q9UNE7
Pathways:	Regulation of Hormone Metabolic Process , Response to Water Deprivation

Application Details

Application Notes:	Optimal working dilutions should be determined experimentally by the investigator.
Comment:	Antigen size: 303 AA
Restrictions:	For Research Use only

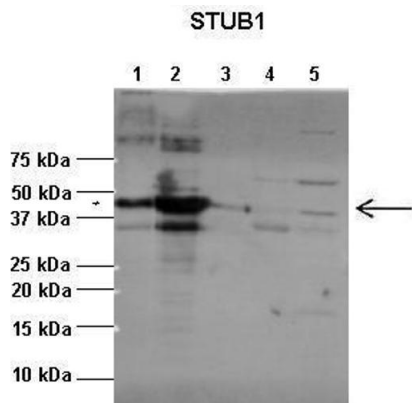
Handling

Format:	Liquid
Concentration:	Lot specific
Buffer:	Liquid. Purified antibody supplied in 1x PBS buffer with 0.09 % (w/v) sodium azide and 2 % sucrose.
Preservative:	Sodium azide
Precaution of Use:	This product contains Sodium azide: a POISONOUS AND HAZARDOUS SUBSTANCE which should be handled by trained staff only.

Handling

Handling Advice:	Avoid repeated freeze-thaw cycles.
Storage:	-20 °C
Storage Comment:	For short term use, store at 2-8°C up to 1 week. For long term storage, store at -20°C in small aliquots to prevent freeze-thaw cycles.

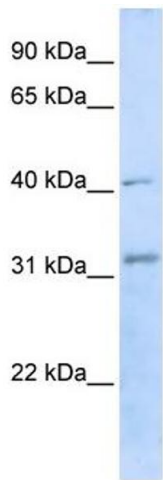
Images



Western Blotting

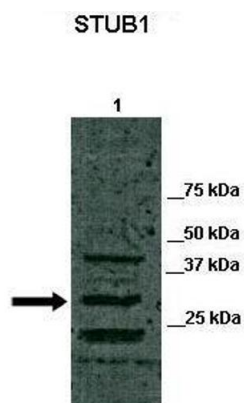
Image 1. Lanes: 1:1ug insoluble STUB1 protein, 2:1ug soluble STUB1 protein, 3:1ug EPM2A protein, 4:1ug insoluble PPP1R3C protein, 5:1ug soluble PPP1R3C protein
Primary Antibody Dilution: 1:2500 Secondary Antibody: Anti-rabbit-AP Secondary Antibody Dilution: 1:20,000 Gene Name: STUB1 Submitted by: Pedro Castanheira, Biocant

See Immunoblot 2 Data and customer Feedback for more Information



Western Blotting

Image 2. WB Suggested Anti-STUB1 Antibody Titration: 0.2-1 ug/ml ELISA Titer: 1:312500 Positive Control: Transfected 293T



Western Blotting

Image 3. Lanes: Lane 1: 40ug canine retina lysate Primary Antibody Dilution: 1:1000 Secondary Antibody: Goat anti-rabbit-HRP Secondary Antibody Dilution: 1:5000 Gene Name: STUB1 Submitted by: Dr. Stefania Marsili and Dr. William Beltran, University of Pennsylvania

See Immunoblot 3 Data and Customer Feedback for more Information

Please check the [product details page](#) for more images. Overall 4 images are available for ABIN2774917.