

## Datasheet for ABIN2774921 anti-UBE2E3 antibody (N-Term)



[Go to Product page](#)

### 2 Images

#### Overview

Quantity:	100 µL
Target:	UBE2E3
Binding Specificity:	N-Term
Reactivity:	Human, Mouse, Rat, Cow, Dog, Zebrafish (Danio rerio), Guinea Pig, Horse, Rabbit
Host:	Rabbit
Clonality:	Polyclonal
Conjugate:	This UBE2E3 antibody is un-conjugated
Application:	Western Blotting (WB)

#### Product Details

Immunogen:	The immunogen is a synthetic peptide directed towards the N terminal region of human UBE2E3
Sequence:	MSSDRQRSDD ESPSTSSGSS DADQRDPAAP EPEEQEERKP SATQQKKNTK
Predicted Reactivity:	Cow: 100%, Dog: 100%, Guinea Pig: 100%, Horse: 100%, Human: 100%, Mouse: 100%, Rabbit: 100%, Rat: 100%, Zebrafish: 93%
Characteristics:	This is a rabbit polyclonal antibody against UBE2E3. It was validated on Western Blot using a cell lysate as a positive control.
Purification:	Affinity Purified

#### Target Details

Target:	UBE2E3
---------	--------

## Target Details

Alternative Name:	UBE2E3 ( <a href="#">UBE2E3 Products</a> )
Background:	<p>The modification of proteins with ubiquitin is an important cellular mechanism for targeting abnormal or short-lived proteins for degradation. Ubiquitination involves at least three classes of enzymes: ubiquitin-activating enzymes, or E1s, ubiquitin-conjugating enzymes, or E2s, and ubiquitin-protein ligases, or E3s. This gene encodes a member of the E2 ubiquitin-conjugating enzyme family. The encoded protein shares 100 % sequence identity with the mouse and rat counterparts, which indicates that this enzyme is highly conserved in eukaryotes. Two alternatively spliced transcript variants encoding the same protein have been found for this gene.</p> <p>Alias Symbols: UBCH9, UbcM2</p> <p>Protein Interaction Partner: RNF185, MUL1, TRIM39, RNF5, MID1, RNF25, MARCH5, UBE2E3, UBA1, TARDBP, UBC, HTT, ITCH, HERC4, NEDD4L, WWP2, RNF14, RNF8, MDM2, BRCA1, BARD1, KLHL42, RCBTB1, CUL1, CUL3, CUL4A, SPOP, ATXN1, ARID3A, RCBTB2, MOT2, CNOT4, NFE2L2, MID2, TRIM38, TRIM27, TRIM37,</p> <p>Protein Size: 207</p>
Molecular Weight:	23 kDa
Gene ID:	10477
NCBI Accession:	<a href="#">NM_006357</a> , <a href="#">NP_006348</a>
UniProt:	<a href="#">Q969T4</a>

## Application Details

Application Notes:	Optimal working dilutions should be determined experimentally by the investigator.
Comment:	Antigen size: 207 AA
Restrictions:	For Research Use only

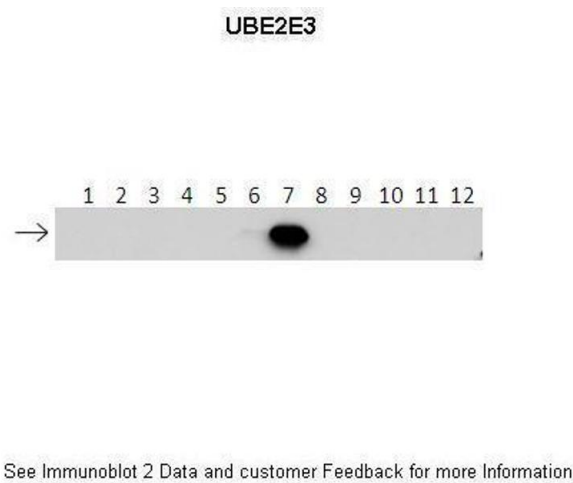
## Handling

Format:	Liquid
Concentration:	Lot specific
Buffer:	Liquid. Purified antibody supplied in 1x PBS buffer with 0.09 % (w/v) sodium azide and 2 % sucrose.
Preservative:	Sodium azide

Handling

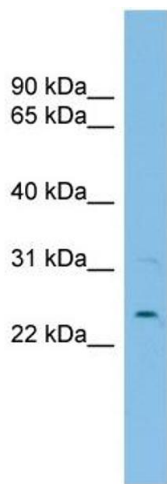
Precaution of Use:	This product contains Sodium azide: a POISONOUS AND HAZARDOUS SUBSTANCE which should be handled by trained staff only.
Handling Advice:	Avoid repeated freeze-thaw cycles.
Storage:	-20 °C
Storage Comment:	For short term use, store at 2-8°C up to 1 week. For long term storage, store at -20°C in small aliquots to prevent freeze-thaw cycles.

Images



**Western Blotting**

**Image 1.** Lanes: 1: 40ng HIS-UBE2D1 protein 2: 40ng HIS-UBE2D2 protein 3: 40ng HIS-UBE2D3 protein 4: 40ng HIS-UBE2D4 protein 5: 40ng HIS-UBE2E1 protein 6: 40ng HIS-UBE2E2 protein 7: 40ng HIS-UBE2E3 protein 8: 40ng HIS-UBE2K protein 9: 40ng HIS-UBE2L3 protein 10: 40ng HIS-UBE2N protein 11: 40ng HIS-UBE2V1 protein 12: 40ng HIS-UBE2V2 protein. Primary Antibody Dilution: 1:500 Secondary Antibody Dilution: 1:50,000 Gene Name: UBE2E3 Submitted by: Dr Chris Boutell. MRC-UoG Centre for Virus Research (CVR), UK.



**Western Blotting**

**Image 2.** WB Suggested Anti-UBE2E3 Antibody Titration: 0.2-1 ug/ml ELISA Titer: 1:62500 Positive Control: HT1080 cell lysate