



Datasheet for ABIN2774931
anti-WWP2 antibody (Middle Region)



[Go to Product page](#)

6 Images

1 Publication

Overview

Quantity:	100 µL
Target:	WWP2
Binding Specificity:	Middle Region
Reactivity:	Human, Mouse, Rat, Dog, Cow, Rabbit, Guinea Pig, Zebrafish (Danio rerio), Horse, Sheep
Host:	Rabbit
Clonality:	Polyclonal
Conjugate:	This WWP2 antibody is un-conjugated
Application:	Western Blotting (WB), Immunohistochemistry (IHC)

Product Details

Immunogen:	The immunogen is a synthetic peptide directed towards the middle region of human WWP2
Sequence:	EMKYTSEGVR YFVDHNTRTT TFKDPRPGFE SGTKQGSPGA YDRSFRWKYH
Predicted Reactivity:	Cow: 100%, Dog: 100%, Guinea Pig: 100%, Horse: 93%, Human: 100%, Mouse: 100%, Rabbit: 100%, Rat: 93%, Sheep: 100%, Zebrafish: 80%
Characteristics:	This is a rabbit polyclonal antibody against WWP2. It was validated on Western Blot and immunohistochemistry.
Purification:	Affinity Purified

Target Details

Target:	WWP2
---------	------

Target Details

Alternative Name: WWP2 ([WWP2 Products](#))

Background: WWP2 is a member of the NEDD4-like protein family. The family of proteins is known to possess ubiquitin-protein ligase activity. WWP2 contains 4 tandem WW domains. The WW domain is a protein motif consisting of 35 to 40 amino acids and is characterized by 4 conserved aromatic residues. The WW domain may mediate specific protein-protein interactions. This gene encodes a member of the NEDD4-like protein family. The family of proteins is known to possess ubiquitin-protein ligase activity. The encoded protein contains 4 tandem WW domains. The WW domain is a protein motif consisting of 35 to 40 amino acids and is characterized by 4 conserved aromatic residues. The WW domain may mediate specific protein-protein interactions. Three alternatively spliced transcript variants encoding distinct isoforms have been found for this gene.

Alias Symbols: AIP2, WWp2-like

Protein Interaction Partner: LGALS9B, ANKRD44, FBXL18, VPS37C, PABPC1, RUSC1, HNRNPUL1, WWP2, PAIP1, TRAF4, FAM189A2, PDLIM7, EIF3A, WIPF1, UBE2L3, UBC, SNRPC, PTCH1, SMAD6, SMAD3, EZH2, PTEN, UBE2D3, FBXL15, RNF11, ARRDC1, ARRDC4, ARRDC3, VPS11, UBE2G1, UBE2J2, UBE2E3, UBE2E1, UBE2D

Protein Size: 431

Molecular Weight: 47 kDa

Gene ID: 11060

NCBI Accession: [NM_199424](#), [NP_955456](#)

UniProt: [O00308](#)

Pathways: [Negative Regulation of Transporter Activity](#)

Application Details

Application Notes: Optimal working dilutions should be determined experimentally by the investigator.

Comment: Antigen size: 431 AA

Restrictions: For Research Use only

Handling

Format: Liquid

Concentration: Lot specific

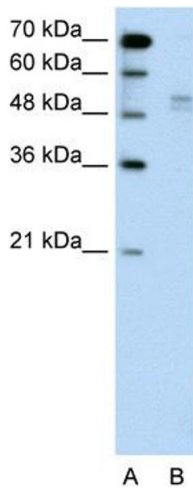
Handling

Buffer:	Liquid. Purified antibody supplied in 1x PBS buffer with 0.09 % (w/v) sodium azide and 2 % sucrose.
Preservative:	Sodium azide
Precaution of Use:	This product contains Sodium azide: a POISONOUS AND HAZARDOUS SUBSTANCE which should be handled by trained staff only.
Handling Advice:	Avoid repeated freeze-thaw cycles.
Storage:	-20 °C
Storage Comment:	For short term use, store at 2-8°C up to 1 week. For long term storage, store at -20°C in small aliquots to prevent freeze-thaw cycles.

Publications

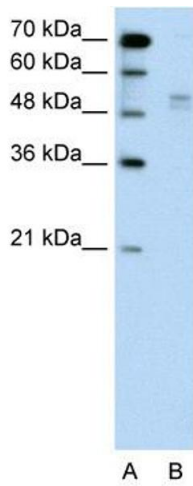
Product cited in:	Lazrek, Goffard, Schanen, Karquel, Bocket, Lion, Devaux, Hedouin, Gosset, Hober: "Detection of hepatitis C virus antibodies and RNA among medicolegal autopsy cases in Northern France." in: Diagnostic microbiology and infectious disease , Vol. 55, Issue 1, pp. 55-8, (2006) (PubMed).
-------------------	---

Images



Western Blotting

Image 1. WB Suggested Anti-WWP2 Antibody Titration: 0.2-1 ug/ml Positive Control: Jurkat cell lysate WWP2 is supported by BioGPS gene expression data to be expressed in Jurkat



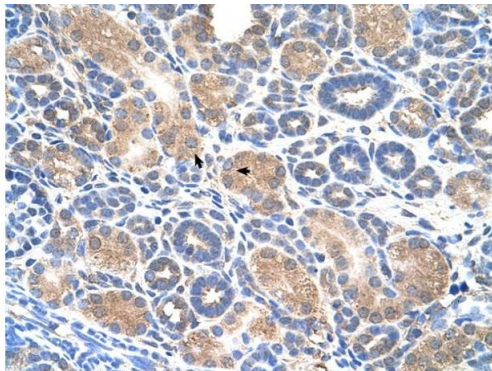
Western Blotting

Image 2. WB Suggested Anti-WWP2

Antibody Titration: 0.2-1 µg/mL

Positive Control: Jurkat cell lysate

WWP2 is supported by BioGPS gene expression data to be expressed in Jurkat



Rabbit Anti-WWP2 Antibody
Catalog Number: ARP43088
Lot Number: QC13260
Paraffin Embedded Tissue: Human Kidney
Cells with Positive label: Epithelial cells of renal tubule (Indicated with Arrows)
Antibody Concentration: 4.0-8.0 µg/ml
Magnification: 400X

Immunohistochemistry

Image 3. Human kidney

Please check the [product details page](#) for more images. Overall 6 images are available for ABIN2774931.