



[Go to Product page](#)

Datasheet for ABIN2774935  
**anti-PHF20 antibody (C-Term)**

3 Images

Overview

Quantity:	100 µL
Target:	PHF20
Binding Specificity:	C-Term
Reactivity:	Human, Cow, Guinea Pig, Horse, Pig, Rabbit
Host:	Rabbit
Clonality:	Polyclonal
Conjugate:	This PHF20 antibody is un-conjugated
Application:	Western Blotting (WB)

Product Details

Immunogen:	The immunogen is a synthetic peptide directed towards the C terminal region of human PHF20
Sequence:	GSALDDAVNP LHENGDDSL S PRLGWPLDQD RSKGSDPKP GSPKVKEYVS
Predicted Reactivity:	Cow: 92%, Guinea Pig: 83%, Horse: 83%, Human: 100%, Pig: 92%, Rabbit: 92%
Characteristics:	This is a rabbit polyclonal antibody against PHF20. It was validated on Western Blot using a cell lysate as a positive control.
Purification:	Affinity Purified

Target Details

Target:	PHF20
Alternative Name:	PHF20 ( <a href="#">PHF20 Products</a> )

## Target Details

---

Background: PHF20 is a possible transcription factor.  
Alias Symbols: RP5-1121G12.1, C20orf104, FLJ33479, GLEA2, HCA58, NZF, TZP  
Protein Interaction Partner: UBC, Dlg4, TP53, PATL1, DDX42, HIST1H4A, HIST1H3A, Kat8,  
Protein Size: 768

---

Molecular Weight: 83 kDa

---

Gene ID: 51230

---

NCBI Accession: [NM\\_016436](#)

---

UniProt: [Q9BVI0](#)

---

## Application Details

---

Application Notes: Optimal working dilutions should be determined experimentally by the investigator.

---

Comment: Antigen size: 768 AA

---

Restrictions: For Research Use only

---

## Handling

---

Format: Liquid

---

Concentration: Lot specific

---

Buffer: Liquid. Purified antibody supplied in 1x PBS buffer with 0.09 % (w/v) sodium azide and 2 % sucrose.

---

Preservative: Sodium azide

---

Precaution of Use: This product contains Sodium azide: a POISONOUS AND HAZARDOUS SUBSTANCE which should be handled by trained staff only.

---

Handling Advice: Avoid repeated freeze-thaw cycles.

---

Storage: -20 °C

---

Storage Comment: For short term use, store at 2-8°C up to 1 week. For long term storage, store at -20°C in small aliquots to prevent freeze-thaw cycles.

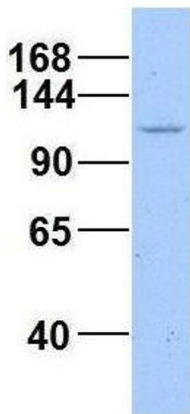
---



#### Western Blotting

**Image 1.** WB Suggested Anti-PHF20 Antibody Titration: 0.2-1 ug/ml ELISA Titer: 1:2500 Positive Control: Jurkat cell lysate

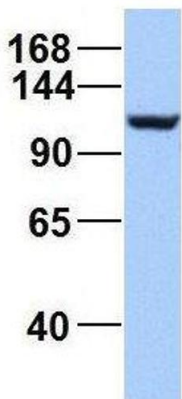
### PHF20



#### Western Blotting

**Image 2.** Host: Rabbit Target Name: WT1 Sample Type: 721\_B Antibody Dilution: 1.0ug/ml PHF20 is strongly supported by BioGPS gene expression data to be expressed in Human 721\_B cells

### PHF20



#### Western Blotting

**Image 3.** Host: Rabbit Target Name: EGFL8 Sample Type: HeLa Antibody Dilution: 1.0ug/ml PHF20 is strongly supported by BioGPS gene expression data to be expressed in HeLa