

Datasheet for ABIN2774945  
**anti-ZNF280D antibody (Middle Region)**[Go to Product page](#)

1 Image

1 Publication

## Overview

Quantity:	100 µL
Target:	ZNF280D
Binding Specificity:	Middle Region
Reactivity:	Human, Horse, Dog, Cow, Rabbit, Pig
Host:	Rabbit
Clonality:	Polyclonal
Conjugate:	This ZNF280D antibody is un-conjugated
Application:	Western Blotting (WB)

## Product Details

Immunogen:	The immunogen is a synthetic peptide directed towards the middle region of human ZNF280D
Sequence:	STLQLSPVRT KNITAKNPAK SNTSKPNTVK SNASKPNTSK PNGSKSKYKP
Predicted Reactivity:	Cow: 79%, Dog: 93%, Horse: 86%, Human: 100%, Pig: 93%, Rabbit: 86%
Characteristics:	This is a rabbit polyclonal antibody against ZNF280D. It was validated on Western Blot using a cell lysate as a positive control.
Purification:	Affinity Purified

## Target Details

Target:	ZNF280D
Alternative Name:	ZNF280D ( <a href="#">ZNF280D Products</a> )

## Target Details

Background: ZNF280D may function as a transcription factor.  
Alias Symbols: MGC21637, MGC61687, SUHW4, ZNF634  
Protein Interaction Partner: UBC, CBX5, BRCA1, UBD, CBX3,  
Protein Size: 979

Molecular Weight: 109 kDa

Gene ID: 54816

NCBI Accession: [NM\\_017661](#), [NP\\_060131](#)

UniProt: [Q6N043](#)

## Application Details

Application Notes: Optimal working dilutions should be determined experimentally by the investigator.

Comment: Antigen size: 979 AA

Restrictions: For Research Use only

## Handling

Format: Liquid

Concentration: Lot specific

Buffer: Liquid. Purified antibody supplied in 1x PBS buffer with 0.09 % (w/v) sodium azide and 2 % sucrose.

Preservative: Sodium azide

Precaution of Use: This product contains Sodium azide: a POISONOUS AND HAZARDOUS SUBSTANCE which should be handled by trained staff only.

Handling Advice: Avoid repeated freeze-thaw cycles.

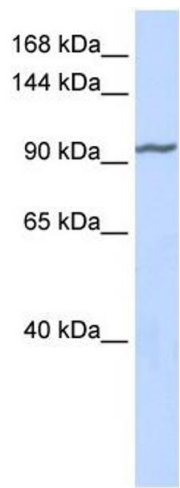
Storage: -20 °C

Storage Comment: For short term use, store at 2-8°C up to 1 week. For long term storage, store at -20°C in small aliquots to prevent freeze-thaw cycles.

## Publications

Product cited in: Infantino, Iacobazzi, Palmieri, Menga: "ATP-citrate lyase is essential for macrophage inflammatory response." in: **Biochemical and biophysical research communications**, Vol. 440,

Validation report #100039 for Immunocytochemistry (ICC)



Western Blotting

**Image 1.** WB Suggested Anti-ZNF280D Antibody Titration:  
0.2-1 ug/ml ELISA Titer: 1:62500 Positive Control: Human  
Muscle