

Datasheet for ABIN2774965  
**anti-ZNF286A antibody (N-Term)**



[Go to Product page](#)

1 Image

## Overview

Quantity:	100 µL
Target:	ZNF286A
Binding Specificity:	N-Term
Reactivity:	Human
Host:	Rabbit
Clonality:	Polyclonal
Conjugate:	This ZNF286A antibody is un-conjugated
Application:	Western Blotting (WB)

## Product Details

Immunogen:	The immunogen is a synthetic peptide directed towards the N terminal region of human ZNF286
Sequence:	GALSSQDSPH FQEKSTEEGE VAALRLTARS QETVTFKDVA MDFTPEEWGK
Predicted Reactivity:	Human: 100%
Characteristics:	This is a rabbit polyclonal antibody against ZNF286. It was validated on Western Blot using a cell lysate as a positive control.
Purification:	Affinity Purified

## Target Details

Target:	ZNF286A
---------	---------

## Target Details

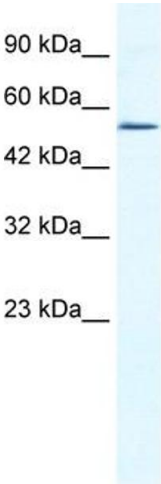
Alternative Name:	ZNF286 ( <a href="#">ZNF286A Products</a> )
Background:	Located on chromosome 17, the ZNF286 encodes zinc finger protein 286 with unknown function.  Alias Symbols: ZNF286  Protein Interaction Partner: KRTAP10-5, KRTAP10-1, KRT40,  Protein Size: 521
Molecular Weight:	60 kDa
Gene ID:	57335
NCBI Accession:	<a href="#">NM_020652</a> , <a href="#">NP_065703</a>
UniProt:	<a href="#">Q9HBT8</a>

## Application Details

Application Notes:	Optimal working dilutions should be determined experimentally by the investigator.
Comment:	Antigen size: 521 AA
Restrictions:	For Research Use only

## Handling

Format:	Liquid
Concentration:	Lot specific
Buffer:	Liquid. Purified antibody supplied in 1x PBS buffer with 0.09 % (w/v) sodium azide and 2 % sucrose.
Preservative:	Sodium azide
Precaution of Use:	This product contains Sodium azide: a POISONOUS AND HAZARDOUS SUBSTANCE which should be handled by trained staff only.
Handling Advice:	Avoid repeated freeze-thaw cycles.
Storage:	-20 °C
Storage Comment:	For short term use, store at 2-8°C up to 1 week. For long term storage, store at -20°C in small aliquots to prevent freeze-thaw cycles.



Western Blotting

**Image 1.** WB Suggested Anti-ZNF286 Antibody Titration:  
0.2-1 ug/ml ELISA Titer: 1:312500 Positive Control: HepG2  
cell lysate