



[Go to Product page](#)

Datasheet for ABIN2774999

anti-ZNF557 antibody (Middle Region)

1 Image

Overview

Quantity:	100 µL
Target:	ZNF557
Binding Specificity:	Middle Region
Reactivity:	Human, Mouse, Rat, Cow, Dog, Guinea Pig, Horse
Host:	Rabbit
Clonality:	Polyclonal
Conjugate:	This ZNF557 antibody is un-conjugated
Application:	Western Blotting (WB)

Product Details

Immunogen:	The immunogen is a synthetic peptide directed towards the middle region of human ZNF557
Sequence:	GKAFGTRSSL SSHYSIHTGE YPYECHDCGR TFRRRSNLTQ HIRHTHTGEKP
Predicted Reactivity:	Cow: 77%, Dog: 77%, Guinea Pig: 77%, Horse: 77%, Human: 100%, Mouse: 77%, Rat: 77%
Characteristics:	This is a rabbit polyclonal antibody against ZNF557. It was validated on Western Blot using a cell lysate as a positive control.
Purification:	Affinity Purified

Target Details

Target:	ZNF557
Alternative Name:	ZNF557 (ZNF557 Products)

Target Details

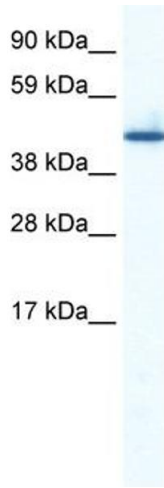
Background:	ZNF557 is a new candidate transcription factor. Protein Interaction Partner: SUV39H2, SMYD3, PRMT6, WHSC1L1, SUV39H1, SMAD9, UBC, Protein Size: 375
Molecular Weight:	43 kDa
Gene ID:	79230
NCBI Accession:	NM_024341 , NP_077317
UniProt:	Q8N988

Application Details

Application Notes:	Optimal working dilutions should be determined experimentally by the investigator.
Comment:	Antigen size: 375 AA
Restrictions:	For Research Use only

Handling

Format:	Liquid
Concentration:	Lot specific
Buffer:	Liquid. Purified antibody supplied in 1x PBS buffer with 0.09 % (w/v) sodium azide and 2 % sucrose.
Preservative:	Sodium azide
Precaution of Use:	This product contains Sodium azide: a POISONOUS AND HAZARDOUS SUBSTANCE which should be handled by trained staff only.
Handling Advice:	Avoid repeated freeze-thaw cycles.
Storage:	-20 °C
Storage Comment:	For short term use, store at 2-8°C up to 1 week. For long term storage, store at -20°C in small aliquots to prevent freeze-thaw cycles.



Western Blotting

Image 1. WB Suggested Anti-ZNF557 Antibody Titration:
0.2-1 ug/ml ELISA Titer: 1:312500 Positive Control: Human
Spleen