



[Go to Product page](#)

Datasheet for ABIN2775032
anti-RAX2 antibody (N-Term)

1 Image

Overview

Quantity:	100 µL
Target:	RAX2
Binding Specificity:	N-Term
Reactivity:	Human, Dog, Cow, Pig
Host:	Rabbit
Clonality:	Polyclonal
Conjugate:	This RAX2 antibody is un-conjugated
Application:	Western Blotting (WB)

Product Details

Immunogen:	The immunogen is a synthetic peptide directed towards the N terminal region of human RAXL1
Sequence:	MFLSPGEGPA TEGGGLGPGE EAPKKKHRRN RTTFTTYQLH QLERAFAESH
Predicted Reactivity:	Cow: 93%, Dog: 85%, Human: 100%, Pig: 93%
Characteristics:	This is a rabbit polyclonal antibody against RAXL1. It was validated on Western Blot using a cell lysate as a positive control.
Purification:	Protein A purified

Target Details

Target:	RAX2
Alternative Name:	RAXL1 (RAX2 Products)

Target Details

Background: RAXL1 is a hypothetical protein
Alias Symbols: QRX, ARMD6, RAXL1, CORD11
Protein Interaction Partner: CRX,
Protein Size: 184

Molecular Weight: 20 kDa

Gene ID: 84839

NCBI Accession: [NM_032753](#), [NP_116142](#)

UniProt: [Q96IS3](#)

Application Details

Application Notes: Optimal working dilutions should be determined experimentally by the investigator.

Comment: Antigen size: 184 AA

Restrictions: For Research Use only

Handling

Format: Liquid

Concentration: Lot specific

Buffer: Liquid. Purified antibody supplied in 1x PBS buffer with 0.09 % (w/v) sodium azide and 2 % sucrose.

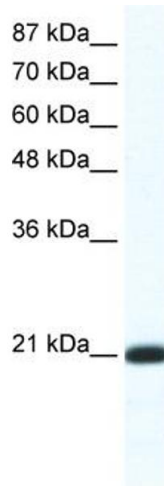
Preservative: Sodium azide

Precaution of Use: This product contains Sodium azide: a POISONOUS AND HAZARDOUS SUBSTANCE which should be handled by trained staff only.

Handling Advice: Avoid repeated freeze-thaw cycles.

Storage: -20 °C

Storage Comment: For short term use, store at 2-8°C up to 1 week. For long term storage, store at -20°C in small aliquots to prevent freeze-thaw cycles.



Western Blotting

Image 1. WB Suggested Anti-RAXL1 Antibody Titration: 1.25ug/ml ELISA Titer: 1:312500 Positive Control: Jurkat cell lysate