



[Go to Product page](#)

Datasheet for ABIN2775039

## anti-HSFY1 antibody (N-Term)

### 1 Image

#### Overview

Quantity:	100 µL
Target:	HSFY1
Binding Specificity:	N-Term
Reactivity:	Human, Dog, Cow, Mouse, Rat
Host:	Rabbit
Clonality:	Polyclonal
Conjugate:	This HSFY1 antibody is un-conjugated
Application:	Western Blotting (WB)

#### Product Details

Immunogen:	The immunogen is a synthetic peptide directed towards the N terminal region of human HSFY1
Sequence:	SWDENGTCIV INEELFKKEI LETKAPYRIF QTDAIKSFVR QLNLYGFSKI
Predicted Reactivity:	Cow: 79%, Dog: 79%, Human: 100%, Mouse: 79%, Rat: 79%
Characteristics:	This is a rabbit polyclonal antibody against HSFY1. It was validated on Western Blot using a cell lysate as a positive control.
Purification:	Protein A purified

#### Target Details

Target:	HSFY1
Alternative Name:	HSFY1 ( <a href="#">HSFY1 Products</a> )

## Target Details

---

**Background:** The HSFY1 gene encodes a member of the heat shock factor (HSF) family of transcriptional activators for heat shock proteins. HSFY1 is a candidate gene for azoospermia, since it localizes to a region of chromosome Y that is sometimes deleted in infertile males. The genome has two identical copies of this gene within a palindromic region, this record represents the more centromeric copy.

Alias Symbols: HSFY, HSF2L, HSFY2

Protein Interaction Partner: HNRNPF, QRICH1, RBM47, SV2B, GCM2, TBX6, SOX15, RBFOX1, HSFY2, E2F7, RABEP1, PPM1A, NDUFS1, AIF1, HOXA1,

Protein Size: 401

---

**Molecular Weight:** 45 kDa

---

**Gene ID:** 86614

---

**NCBI Accession:** [NM\\_033108](#), [NP\\_149099](#)

---

**UniProt:** [Q96LI6](#)

## Application Details

---

**Application Notes:** Optimal working dilutions should be determined experimentally by the investigator.

---

**Comment:** Antigen size: 401 AA

---

**Restrictions:** For Research Use only

## Handling

---

**Format:** Liquid

---

**Concentration:** Lot specific

---

**Buffer:** Liquid. Purified antibody supplied in 1x PBS buffer with 0.09 % (w/v) sodium azide and 2 % sucrose.

---

**Preservative:** Sodium azide

---

**Precaution of Use:** This product contains Sodium azide: a POISONOUS AND HAZARDOUS SUBSTANCE which should be handled by trained staff only.

---

**Handling Advice:** Avoid repeated freeze-thaw cycles.

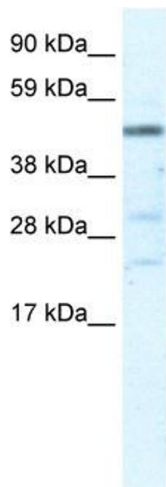
---

**Storage:** -20 °C

---

**Storage Comment:** For short term use, store at 2-8°C up to 1 week. For long term storage, store at -20°C in small

aliquots to prevent freeze-thaw cycles.



#### Western Blotting

**Image 1.** WB Suggested Anti-HSFY1 Antibody Titration:  
5.0ug/ml ELISA Titer: 1:62500 Positive Control: Human Liver