



[Go to Product page](#)

Datasheet for ABIN2775053

## anti-ZFP91 antibody (Middle Region)

1 Image

1 Publication

### Overview

Quantity:	100 µL
Target:	ZFP91
Binding Specificity:	Middle Region
Reactivity:	Human, Mouse, Rat, Cow, Dog, Horse, Rabbit, Guinea Pig, Saccharomyces cerevisiae, Sheep
Host:	Rabbit
Clonality:	Polyclonal
Conjugate:	This ZFP91 antibody is un-conjugated
Application:	Western Blotting (WB)

### Product Details

Immunogen:	The immunogen is a synthetic peptide directed towards the middle region of human ZFP91
Sequence:	RDETYKPHLE RETPKPRRKS GKVKEEKEKK EIKVEVEVEV KEEENEIRED
Predicted Reactivity:	Cow: 100%, Dog: 100%, Guinea Pig: 100%, Horse: 100%, Human: 100%, Mouse: 100%, Rabbit: 100%, Rat: 100%, Sheep: 100%, Yeast: 80%
Characteristics:	This is a rabbit polyclonal antibody against ZFP91. It was validated on Western Blot using a cell lysate as a positive control.
Purification:	Protein A purified

### Target Details

Target:	ZFP91
---------	-------

## Target Details

---

Alternative Name:	ZFP91 ( <a href="#">ZFP91 Products</a> )
Background:	<p>The protein encoded by ZFP91 is a member of the zinc finger family of proteins. This protein contains C2H2 type domains, which are the classical zinc finger domains found in numerous nucleic acid-binding proteins.</p> <p>Protein Interaction Partner: UBC, RNF2, tat, UTP20, USP5, SUMO1, ELAVL1, SUMO2, MAP3K14, CENPA, CDKN2A,</p> <p>Protein Size: 529</p>
Molecular Weight:	60 kDa
Gene ID:	80829
NCBI Accession:	<a href="#">NM_170768</a> , <a href="#">NP_739574</a>

## Application Details

---

Application Notes:	Optimal working dilutions should be determined experimentally by the investigator.
Comment:	Antigen size: 529 AA
Restrictions:	For Research Use only

## Handling

---

Format:	Liquid
Concentration:	Lot specific
Buffer:	Liquid. Purified antibody supplied in 1x PBS buffer with 0.09 % (w/v) sodium azide and 2 % sucrose.
Preservative:	Sodium azide
Precaution of Use:	This product contains Sodium azide: a POISONOUS AND HAZARDOUS SUBSTANCE which should be handled by trained staff only.
Handling Advice:	Avoid repeated freeze-thaw cycles.
Storage:	-20 °C
Storage Comment:	For short term use, store at 2-8°C up to 1 week. For long term storage, store at -20°C in small aliquots to prevent freeze-thaw cycles.

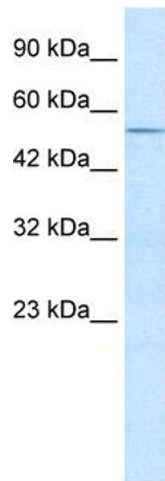
## Publications

---

Product cited in: Harden, Perez-Carrion, Babakordi, Plummer, Hepburn, Barker, Wright, Evans, Corfe: "Evaluation of the salivary proteome as a surrogate tissue for systems biology approaches to understanding appetite." in: **Journal of proteomics**, Vol. 75, Issue 10, pp. 2916-23, (2012) ([PubMed](#)).

## Images

---



### Western Blotting

**Image 1.** WB Suggested Anti-ZFP91 Antibody Titration: 2.5ug/ml ELISA Titer: 1:312500 Positive Control: HepG2 cell lysate