

Datasheet for ABIN2775066  
**anti-TGIF2LY antibody (Middle Region)**[Go to Product page](#)

## 1 Image

## Overview

Quantity:	100 µL
Target:	TGIF2LY
Binding Specificity:	Middle Region
Reactivity:	Human, Saccharomyces cerevisiae
Host:	Rabbit
Clonality:	Polyclonal
Conjugate:	This TGIF2LY antibody is un-conjugated
Application:	Western Blotting (WB)

## Product Details

Immunogen:	The immunogen is a synthetic peptide directed towards the middle region of human TGIF2LY
Sequence:	NWFINARRRI LPDMLQQRN DPIIGHKTGK DAHATHLQST EASVPAKSGP
Predicted Reactivity:	Human: 100%, Yeast: 90%
Characteristics:	This is a rabbit polyclonal antibody against TGIF2LY. It was validated on Western Blot using a cell lysate as a positive control.
Purification:	Protein A purified

## Target Details

Target:	TGIF2LY
Alternative Name:	TGIF2LY ( <a href="#">TGIF2LY Products</a> )

## Target Details

Background:	<p>TGIF2LY is a member of the TALE/TGIF homeobox family of transcription factors. This gene lies within the male specific region of chromosome Y, in a block of sequence that is thought to be the result of a large X-to-Y transposition. The C-terminus of this protein is divergent from that of its chromosome X homolog (TGIF2LX), suggesting that this protein may act as a regulator of TGIF2LX. This gene encodes a member of the TALE/TGIF homeobox family of transcription factors. This gene lies within the male specific region of chromosome Y, in a block of sequence that is thought to be the result of a large X-to-Y transposition. The C-terminus of this protein is divergent from that of its chromosome X homolog (TGIF2LX), suggesting that this protein may act as a regulator of TGIF2LX.</p> <p>Alias Symbols: TGIFLY</p> <p>Protein Interaction Partner: MBIP, NAB2, YWHAQ, PCBD2,</p> <p>Protein Size: 185</p>
Molecular Weight:	21 kDa
Gene ID:	90655
NCBI Accession:	<a href="#">NM_139214</a> , <a href="#">NP_631960</a>
UniProt:	<a href="#">Q8IUE0</a>

## Application Details

Application Notes:	Optimal working dilutions should be determined experimentally by the investigator.
Comment:	Antigen size: 185 AA
Restrictions:	For Research Use only

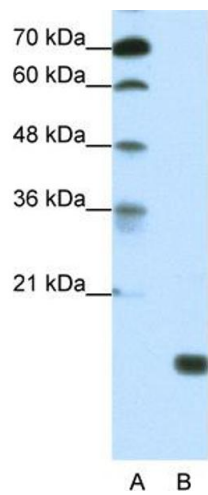
## Handling

Format:	Liquid
Concentration:	Lot specific
Buffer:	Liquid. Purified antibody supplied in 1x PBS buffer with 0.09 % (w/v) sodium azide and 2 % sucrose.
Preservative:	Sodium azide
Precaution of Use:	This product contains Sodium azide: a POISONOUS AND HAZARDOUS SUBSTANCE which should be handled by trained staff only.
Handling Advice:	Avoid repeated freeze-thaw cycles.

Handling

Storage:	-20 °C
Storage Comment:	For short term use, store at 2-8°C up to 1 week. For long term storage, store at -20°C in small aliquots to prevent freeze-thaw cycles.

Images



Western Blotting

**Image 1.** WB Suggested Anti-TGIF2LY Antibody Titration:  
1.25 ug/ml Positive Control: HepG2 Whole Cell