

Datasheet for ABIN2775069  
**anti-PRDM15 antibody (C-Term)**[Go to Product page](#)

## 1 Image

## Overview

Quantity:	100 µL
Target:	PRDM15
Binding Specificity:	C-Term
Reactivity:	Human, Rat, Mouse, Cow, Dog, Guinea Pig, Pig
Host:	Rabbit
Clonality:	Polyclonal
Conjugate:	This PRDM15 antibody is un-conjugated
Application:	Western Blotting (WB)

## Product Details

Immunogen:	The immunogen is a synthetic peptide directed towards the C terminal region of human PRDM15
Sequence:	SILTVTFDTV SGSAMLHNRQ NDVQIHPQPE ASNPQSVAHF INLTTLVNSI
Predicted Reactivity:	Cow: 93%, Dog: 93%, Guinea Pig: 79%, Human: 100%, Mouse: 100%, Pig: 93%, Rat: 100%
Characteristics:	This is a rabbit polyclonal antibody against PRDM15. It was validated on Western Blot using a cell lysate as a positive control.
Purification:	Affinity Purified

## Target Details

Target:	PRDM15
---------	--------

## Target Details

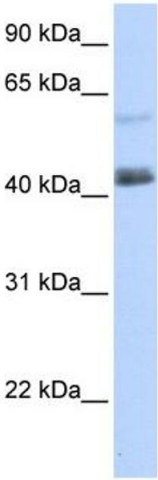
Alternative Name:	PRDM15 ( <a href="#">PRDM15 Products</a> )
Background:	The exact function of PRDM15 remains unknown. Alias Symbols: C21orf83, PFM15, ZNF298 Protein Size: 353
Molecular Weight:	39 kDa
Gene ID:	63977
NCBI Accession:	<a href="#">NM_144771</a> , <a href="#">NP_658984</a>

## Application Details

Application Notes:	Optimal working dilutions should be determined experimentally by the investigator.
Comment:	Antigen size: 353 AA
Restrictions:	For Research Use only

## Handling

Format:	Liquid
Concentration:	Lot specific
Buffer:	Liquid. Purified antibody supplied in 1x PBS buffer with 0.09 % (w/v) sodium azide and 2 % sucrose.
Preservative:	Sodium azide
Precaution of Use:	This product contains Sodium azide: a POISONOUS AND HAZARDOUS SUBSTANCE which should be handled by trained staff only.
Handling Advice:	Avoid repeated freeze-thaw cycles.
Storage:	-20 °C
Storage Comment:	For short term use, store at 2-8°C up to 1 week. For long term storage, store at -20°C in small aliquots to prevent freeze-thaw cycles.



Western Blotting

**Image 1.** WB Suggested Anti-PRDM15 Antibody Titration:  
0.2-1 ug/ml ELISA Titer: 1:62500 Positive Control: 293T cell lysate