

Datasheet for ABIN2775080

anti-ZNF276 antibody (Middle Region)[Go to Product page](#)**1** Image

Overview

Quantity:	100 µL
Target:	ZNF276
Binding Specificity:	Middle Region
Reactivity:	Human, Dog, Mouse, Rat, Cow, Guinea Pig, Horse
Host:	Rabbit
Clonality:	Polyclonal
Conjugate:	This ZNF276 antibody is un-conjugated
Application:	Western Blotting (WB)

Product Details

Immunogen:	The immunogen is a synthetic peptide directed towards the middle region of human ZNF276
Sequence:	LSEGDVLSED ENDKKQNAQS SDESFEPEYPE RKVSGKKSES KEAKKSEEPR
Predicted Reactivity:	Cow: 93%, Dog: 93%, Guinea Pig: 100%, Horse: 79%, Human: 100%, Mouse: 85%, Rat: 93%
Characteristics:	This is a rabbit polyclonal antibody against ZNF276. It was validated on Western Blot using a cell lysate as a positive control.
Purification:	Affinity Purified

Target Details

Target:	ZNF276
Alternative Name:	ZNF276 (ZNF276 Products)

Target Details

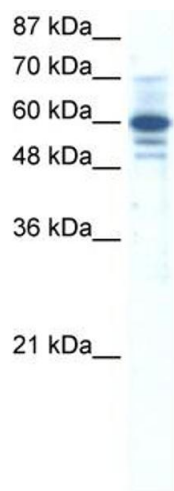
Background:	ZNF276 is a new candidate transcription factor Alias Symbols: MGC111410, MGC126480, MGC45417, ZFP276, ZNF477, CENPZ, CENP-Z Protein Interaction Partner: ZBTB8A, GCC1, ATXN1, ZBTB8B, Protein Size: 539
Molecular Weight:	60 kDa
Gene ID:	92822
NCBI Accession:	NM_152287 , NP_689500
UniProt:	Q8N554

Application Details

Application Notes:	Optimal working dilutions should be determined experimentally by the investigator.
Comment:	Antigen size: 539 AA
Restrictions:	For Research Use only

Handling

Format:	Liquid
Concentration:	Lot specific
Buffer:	Liquid. Purified antibody supplied in 1x PBS buffer with 0.09 % (w/v) sodium azide and 2 % sucrose.
Preservative:	Sodium azide
Precaution of Use:	This product contains Sodium azide: a POISONOUS AND HAZARDOUS SUBSTANCE which should be handled by trained staff only.
Handling Advice:	Avoid repeated freeze-thaw cycles.
Storage:	-20 °C
Storage Comment:	For short term use, store at 2-8°C up to 1 week. For long term storage, store at -20°C in small aliquots to prevent freeze-thaw cycles.



Western Blotting

Image 1. WB Suggested Anti-ZNF276 Antibody Titration:
0.2-1 ug/ml ELISA Titer: 1:62500 Positive Control: HepG2
cell lysate