

Datasheet for ABIN2775138  
**anti-ZNF660 antibody (C-Term)**

## 3 Images

[Go to Product page](#)

## Overview

Quantity:	100 µL
Target:	ZNF660
Binding Specificity:	C-Term
Reactivity:	Human, Rat, Rabbit, Horse
Host:	Rabbit
Clonality:	Polyclonal
Conjugate:	This ZNF660 antibody is un-conjugated
Application:	Western Blotting (WB), Immunohistochemistry (IHC)

## Product Details

Immunogen:	The immunogen is a synthetic peptide directed towards the C terminal region of human ZNF660
Sequence:	TFRQTSQVIL HLRHTHKEKP YKCSECGKAY RYSSQLIQHQ RKHNEEKETS
Predicted Reactivity:	Horse: 100%, Human: 100%, Rabbit: 86%, Rat: 93%
Characteristics:	This is a rabbit polyclonal antibody against ZNF660. It was validated on Western Blot and immunohistochemistry.
Purification:	Protein A purified

## Target Details

Target:	ZNF660
---------	--------

## Target Details

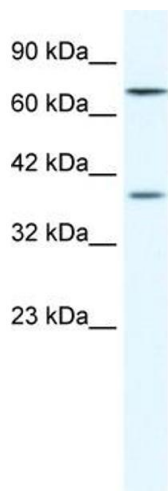
Alternative Name:	ZNF660 ( <a href="#">ZNF660 Products</a> )
Background:	Located on chromosome 3, the ZNF660 gene encodes for zinc finger protein 660. Protein Interaction Partner: UBC, Protein Size: 331
Molecular Weight:	38 kDa
Gene ID:	285349
NCBI Accession:	<a href="#">NM_173658</a> , <a href="#">NP_775929</a>
UniProt:	<a href="#">Q6AZW8</a>

## Application Details

Application Notes:	Optimal working dilutions should be determined experimentally by the investigator.
Comment:	Antigen size: 331 AA
Restrictions:	For Research Use only

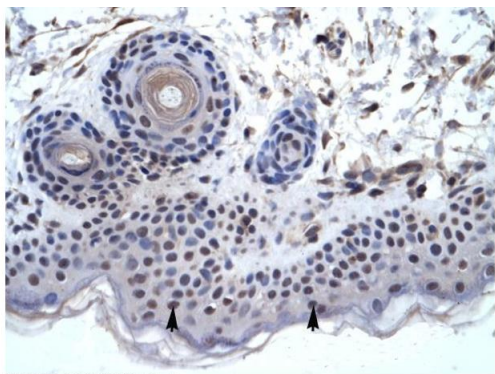
## Handling

Format:	Liquid
Concentration:	Lot specific
Buffer:	Liquid. Purified antibody supplied in 1x PBS buffer with 0.09 % (w/v) sodium azide and 2 % sucrose.
Preservative:	Sodium azide
Precaution of Use:	This product contains Sodium azide: a POISONOUS AND HAZARDOUS SUBSTANCE which should be handled by trained staff only.
Handling Advice:	Avoid repeated freeze-thaw cycles.
Storage:	-20 °C
Storage Comment:	For short term use, store at 2-8°C up to 1 week. For long term storage, store at -20°C in small aliquots to prevent freeze-thaw cycles.



### Western Blotting

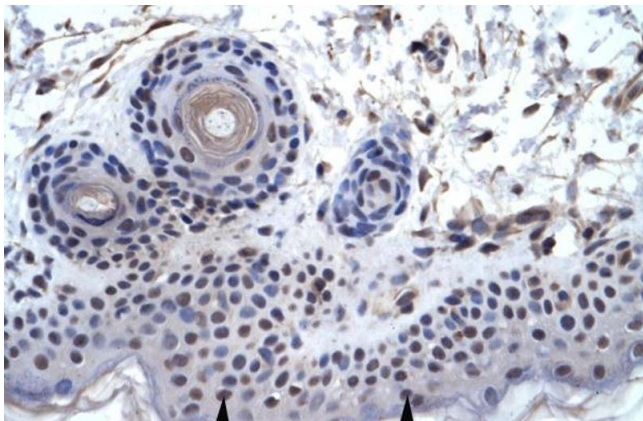
**Image 1.** WB Suggested Anti-ZNF660 Antibody Titration: 1.25ug/ml ELISA Titer: 1:312500 Positive Control: HepG2 cell lysate



Rabbit Anti-ZNF660 Antibody  
Catalog Number: ARP36242  
Lot Number: QC5623  
Paraffin Embedded Tissue: Human Skin  
Cells with Positive label: Squamous epithelial cells (Indicated with Arrows)  
Antibody Concentration: 4.0-8.0 µg/ml  
Magnification: 400X

### Immunohistochemistry

**Image 2.** Human Skin



### Immunohistochemistry

**Image 3.** Human Skin